

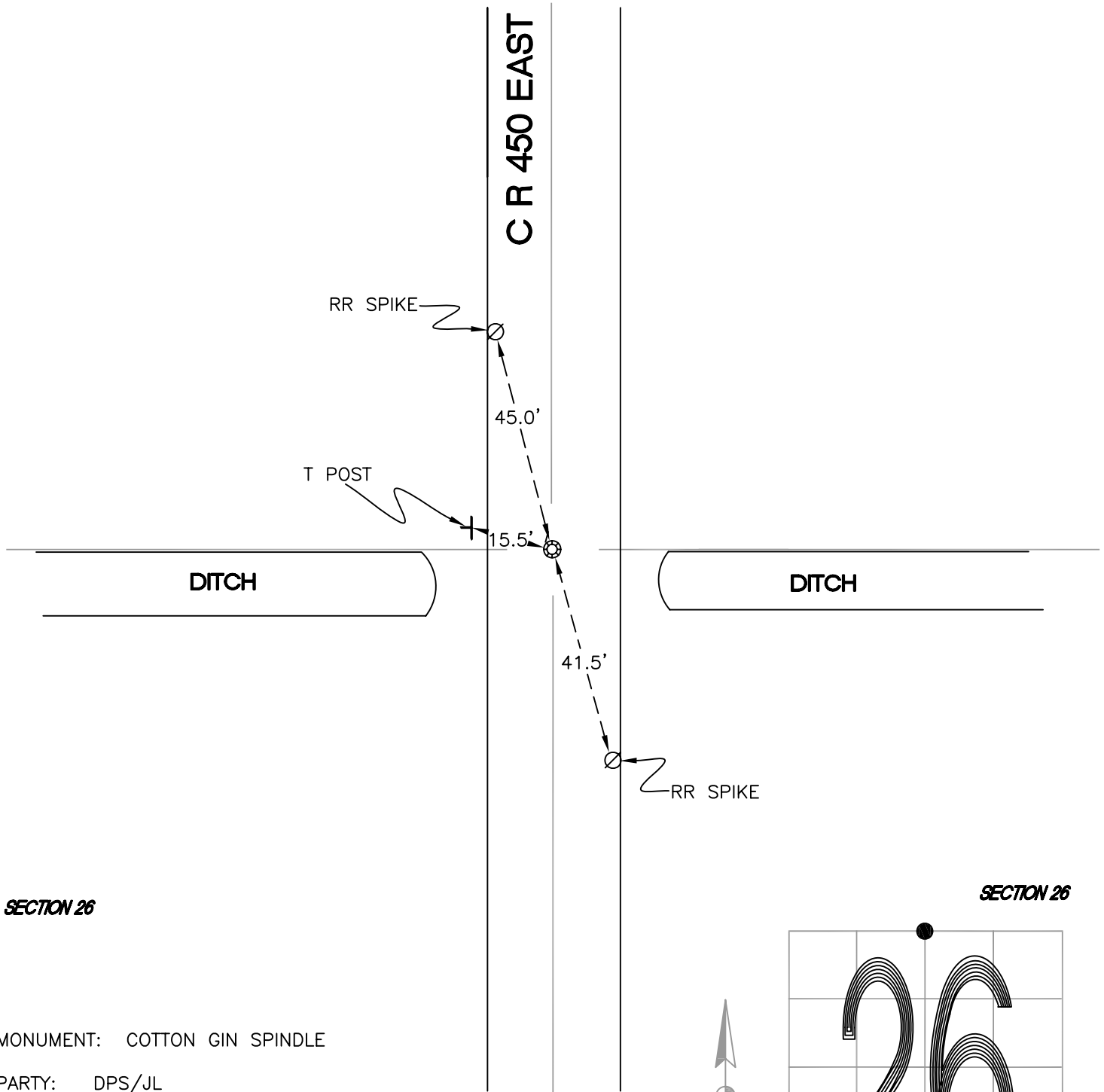
CALIFORNIA TOWNSHIP

T 32 N, R 2 W

R19

SECTION 23

SECTION 23



SECTION 26

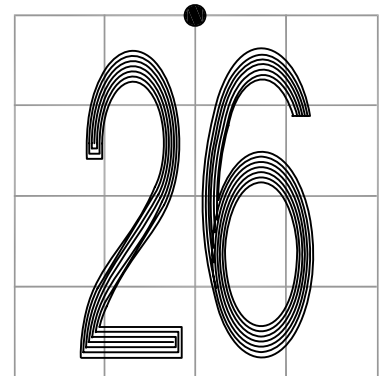
SECTION 26

MONUMENT: COTTON GIN SPINDLE

PARTY: DPS/JL

DATE: 7/14/14

COMMENTS: MONUMENT IS 1" BELOW GRADE.
RR SPIKE FOUND BY VHJ IN 1986 AND
VHJ/DC IN 1989. MONUMENT IS THE
SAME DISTANCE FROM THE RR SPIKE IN
THE SE QUADRANT AS IN 1989.



CORNER LOCATION IN THE SECTION

R19