

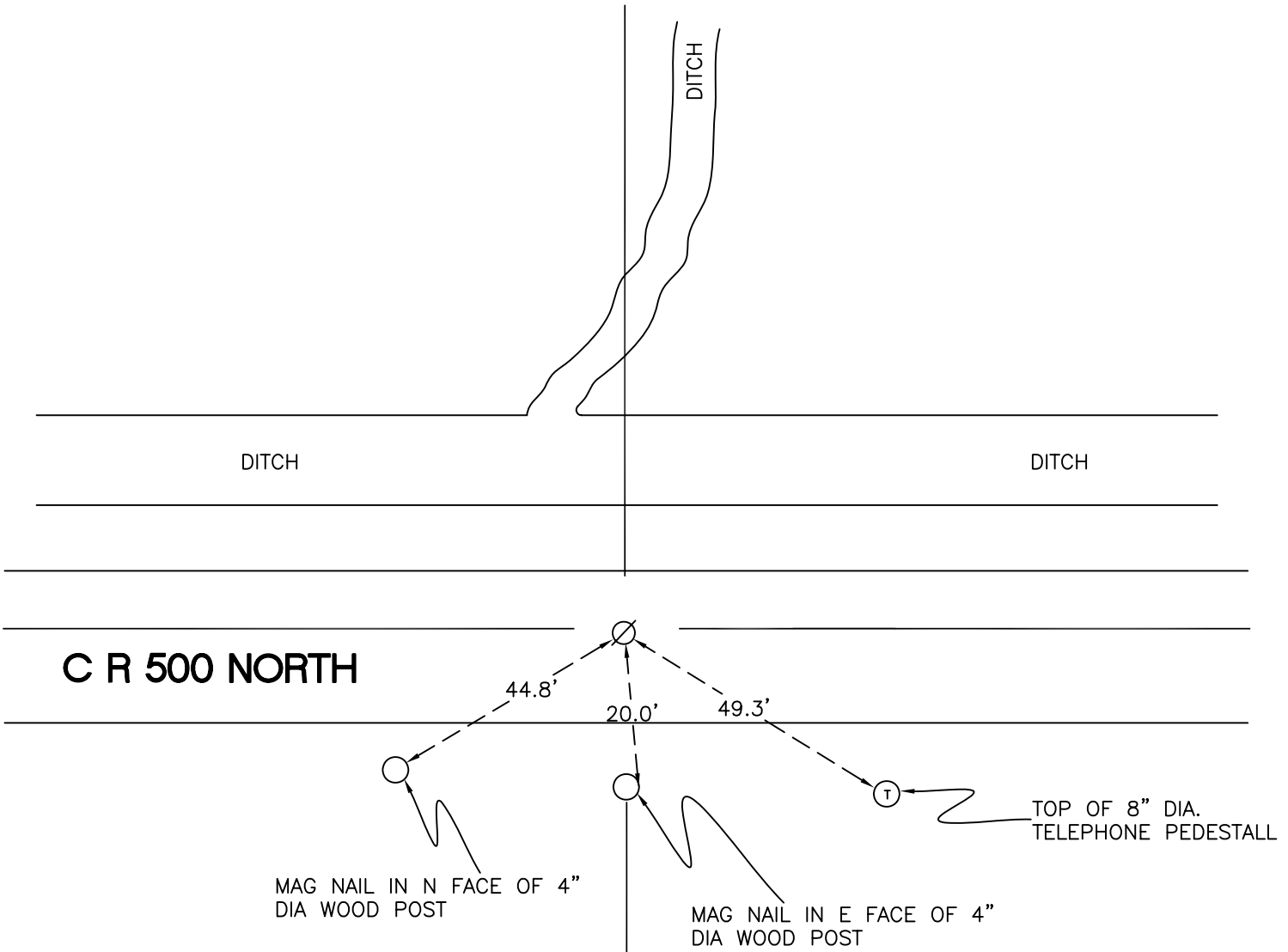
# DAVIS TOWNSHIP

T 34 N, R 2 W

## R19

SECTION 23

SECTION 23



SECTION 26

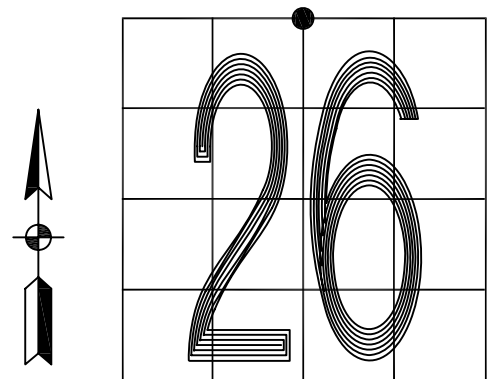
SECTION 26

MONUMENT: RAILROAD SPIKE

PARTY: DPS/JL

DATE: 3-14-16

COMMENTS: 2.5' N OF  $\odot$  OF 500N. FOUND BY INDOT IN 2009 AND S. P. 2 IN 1989.



CORNER LOCATION IN THE SECTION

# R19