

SECTION CORNER REFERENCE

SECTION 23 TOWNSHIP 34-N RANGE 2-W

(Description of Corner Location) SOUTHEAST CORNER

R 21

R 21

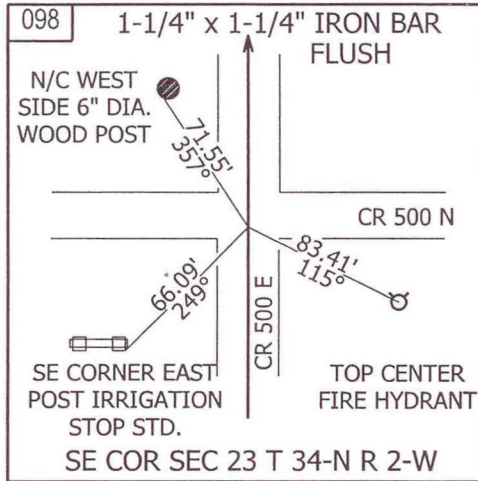
DAVIS TWP.,
STARKE COUNTY, INDIANA



COORDINATES

- NAD '83 IN E. ZONE
 - NAD '83 IN W. ZONE
 - LOCAL GRID
- Units: US FEET
Pt. #: 098
N: 6,640.207
E: 15,291.550

TYPE OF MON.: 1-1/4" x 1-1/4" IRON BAR
 DEPTH: FLUSH
 UNCERTAINTY:
 BY: LAPORTE SURVEY
 DATE: JULY 2009
 DES.NO.: 0500068

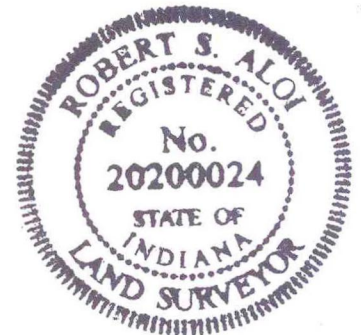


STATE FORM 40180 (R2/2-04)

REFERENCED BY: INDOT

COMMENTS: THE 1 1/4" x 1 1/4" IRON BAR SHOWN IN THE SKETCH IS MOST PROBABLY THE ACTUAL SECTION CORNER MONUMENT OF RECORD BEING A CROSSING BOLT

DUE TO WITNESS REFERENCES NOT MATCHING 2002 RECORDS, MONUMENT LOCATION NEEDS TO BE VERIFIED BY SURVEY



R 21