

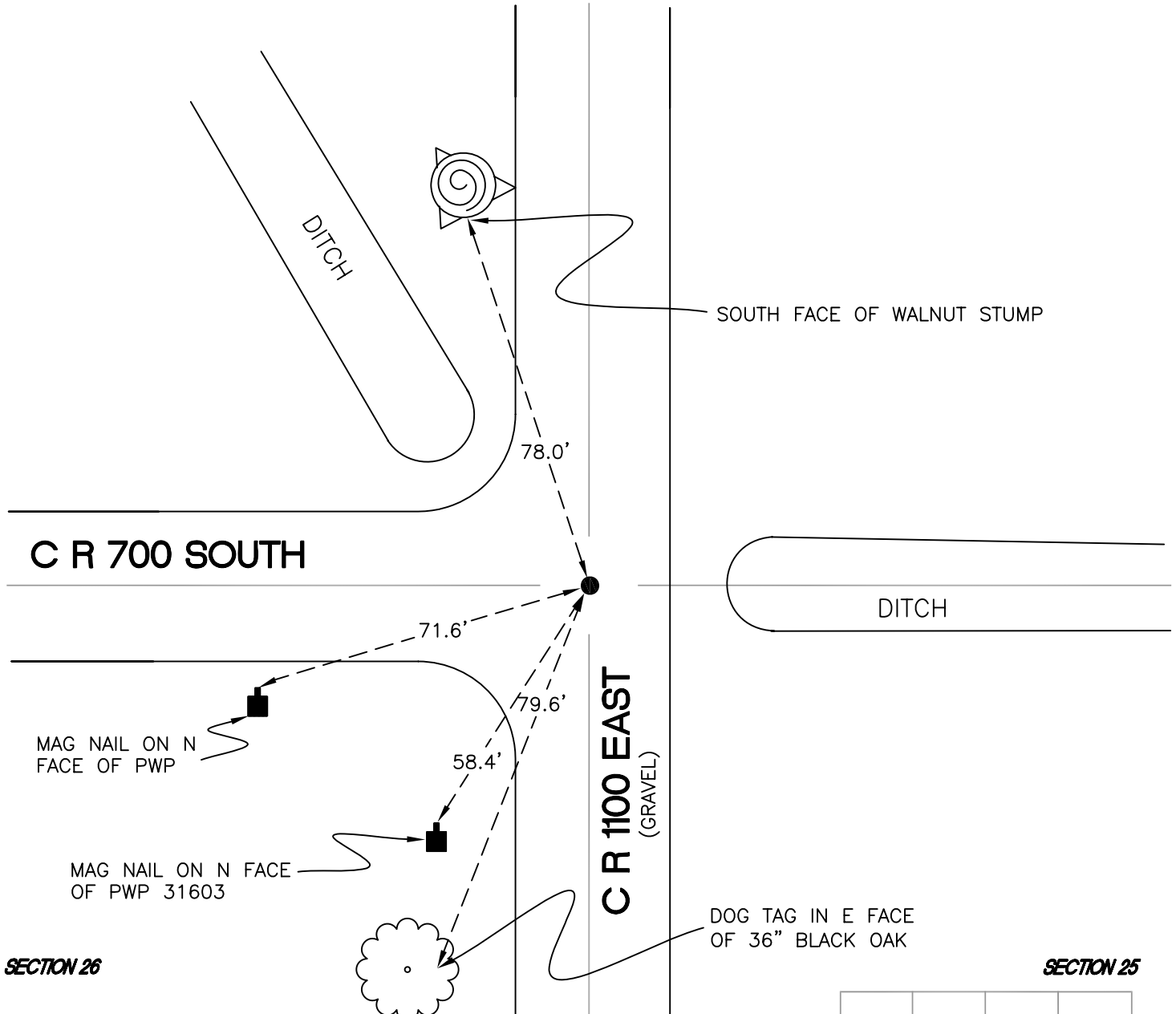
NORTH BEND TOWNSHIP

T 32 N, R 1 W

R21

SECTION 23

SECTION 24



SECTION 26

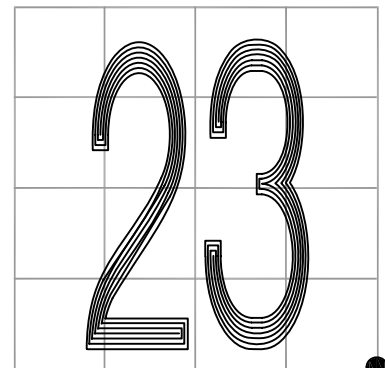
SECTION 25

MONUMENT: $\frac{3}{4}$ " IRON ROD (bent)

PARTY: JL/AO

DATE: 6/6/12

COMMENTS: 2" BELOW GRADE
DISTANCES TO REFERENCES MEASURED
FROM WHERE IRON ROD STRAIGHTEND OUT.
IRON ROD SET IN 1986 REPLACING PK NAIL.



CORNER LOCATION IN THE SECTION

R21