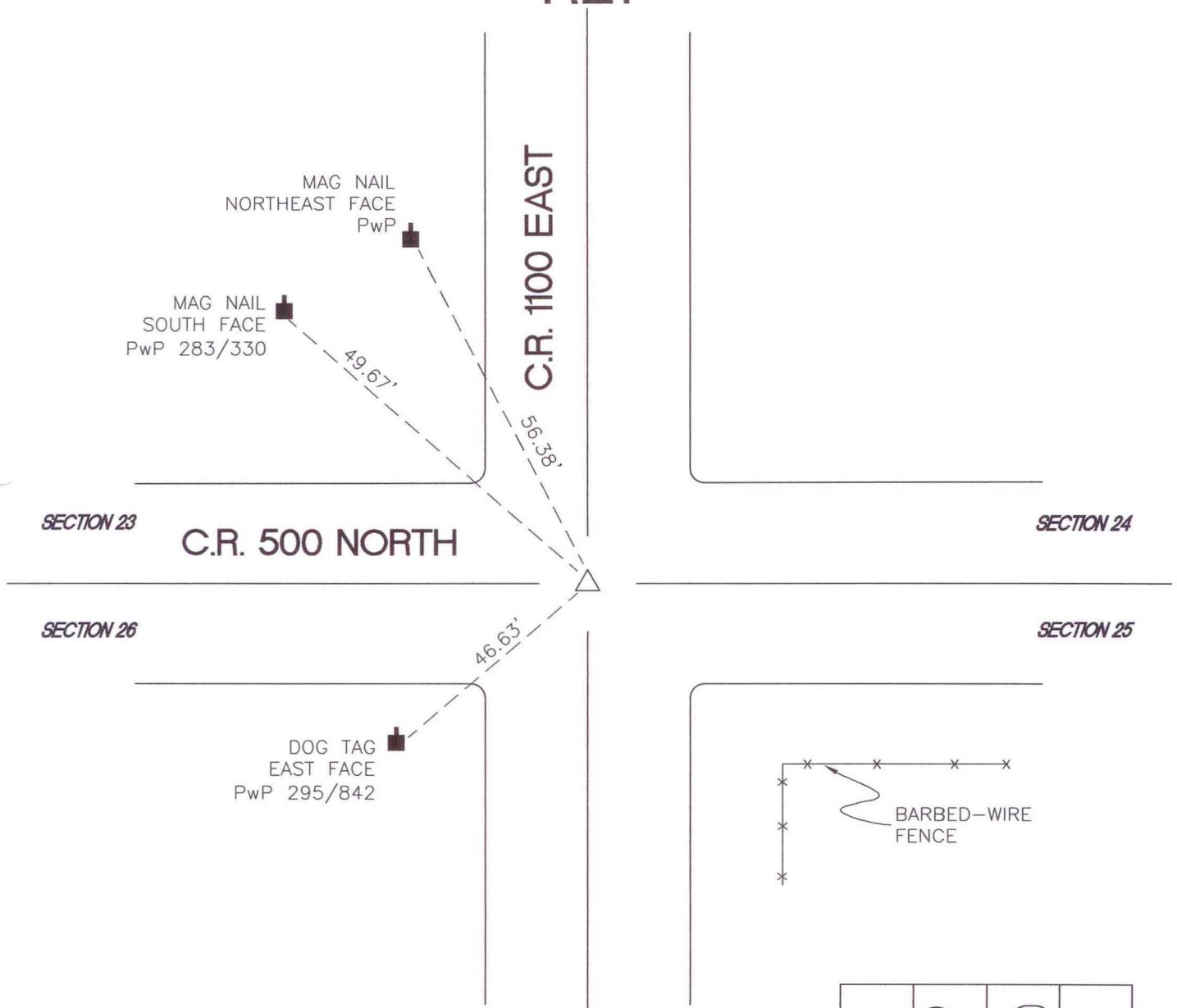


OREGON TOWNSHIP

T 34 N, R 1 W

R21



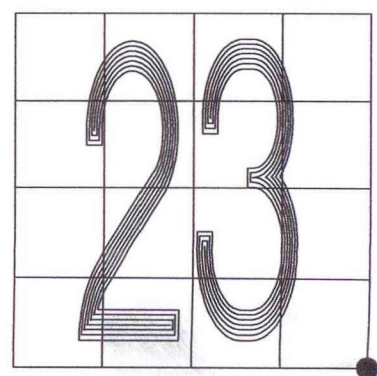
MONUMENT: (F) 3/4" REROD 2" BELOW GRADE

CORNER OF: RECORD USE

PARTY: VHJ/COD

DATE: 3-22-05

COMMENTS:
 HISTORY: RLP OF STARKE COUNTY SURVEYOR'S
 OFFICE, SET 3/4" REROD ON OCTOBER 4, 1984.



CORNER LOCATION IN THE SECTION