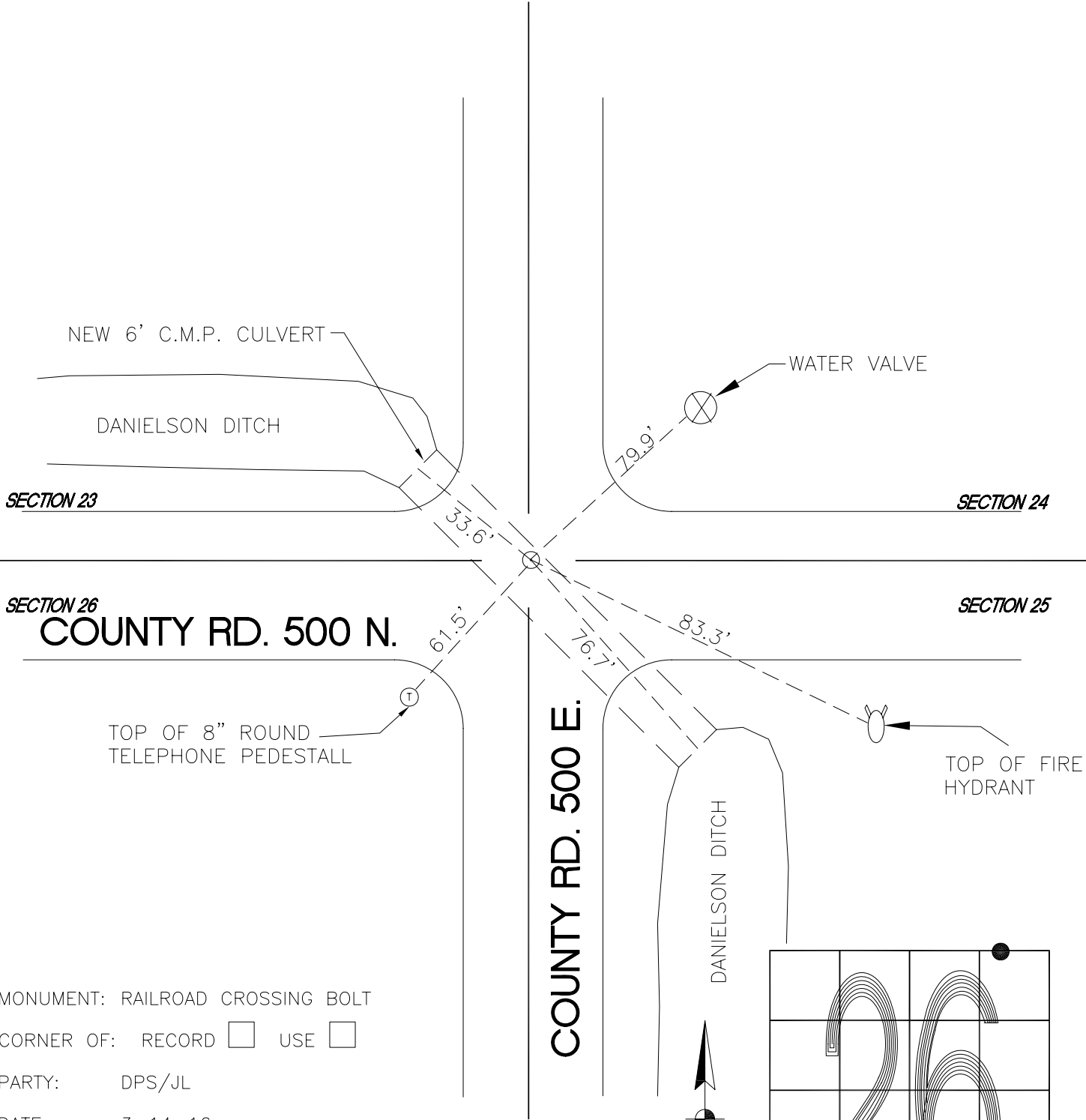


DAVIS TOWNSHIP

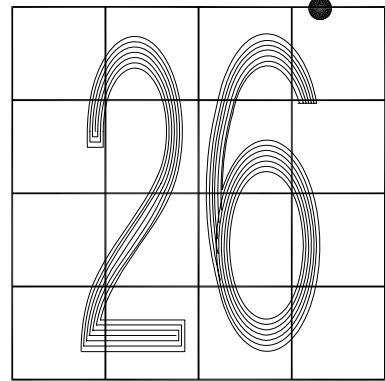
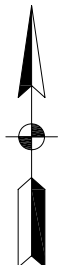
T 34 N, R 2 W

R21



MONUMENT: RAILROAD CROSSING BOLT
 CORNER OF: RECORD USE
 PARTY: DPS/JL
 DATE: 3-14-16

COMMENTS: CORNER LOST WHEN NEW CULVERT WAS INSTALLED
 RE-ESTABLISHED FROM TERRITORIAL ENGINEERING
 JENSEN SURVEY JOB # (86S185) . FOUND BY DPS/RSA IN 2002.
 CORNER IN CENTER OF WEST BOUND LANE. 1 1/2" X 1 1/4"
 IRON BAR FOUND IN 2009 BY INDOT.



R21

CORNER LOCATION IN THE SECTION