

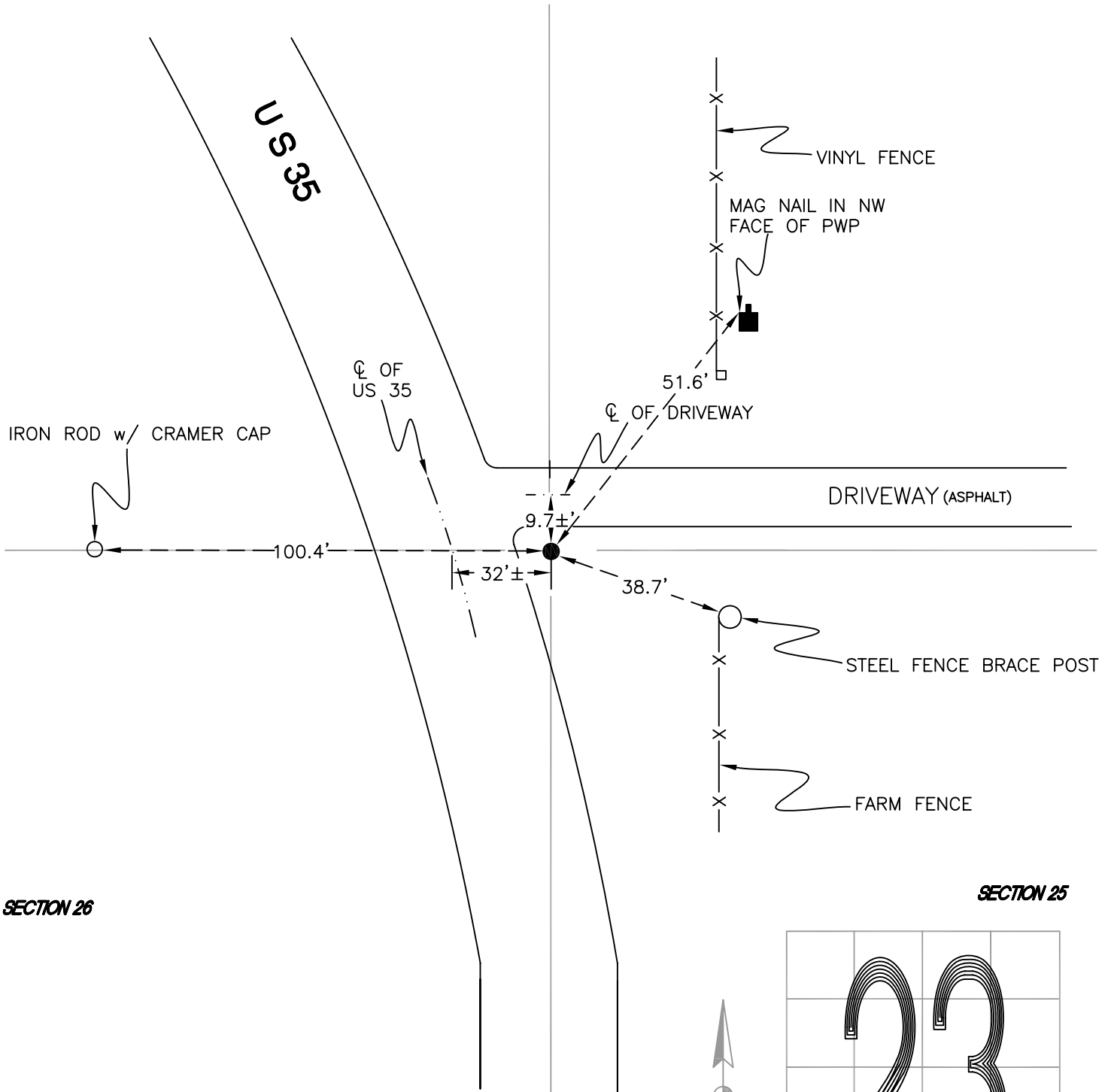
CALIFORNIA TOWNSHIP

T 32 N, R 2 W

R21

SECTION 23

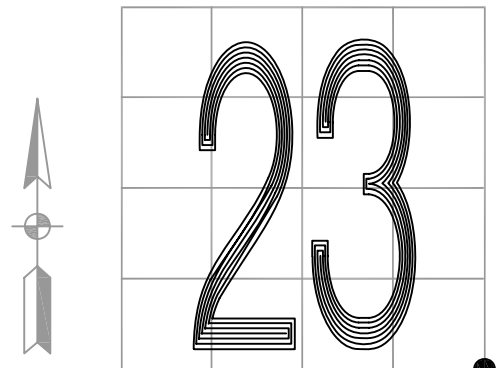
SECTION 24



SECTION 26

SECTION 25

MONUMENT: 5/8" IRON ROD WITH CAP 880024/29900023
 PARTY: DPS/JL
 DATE: 7/7/14
 COMMENTS: SET BY PLYMOUTH LAND SURVEYING IN 2012



CORNER LOCATION IN THE SECTION

R21