

NORTH BEND TOWNSHIP

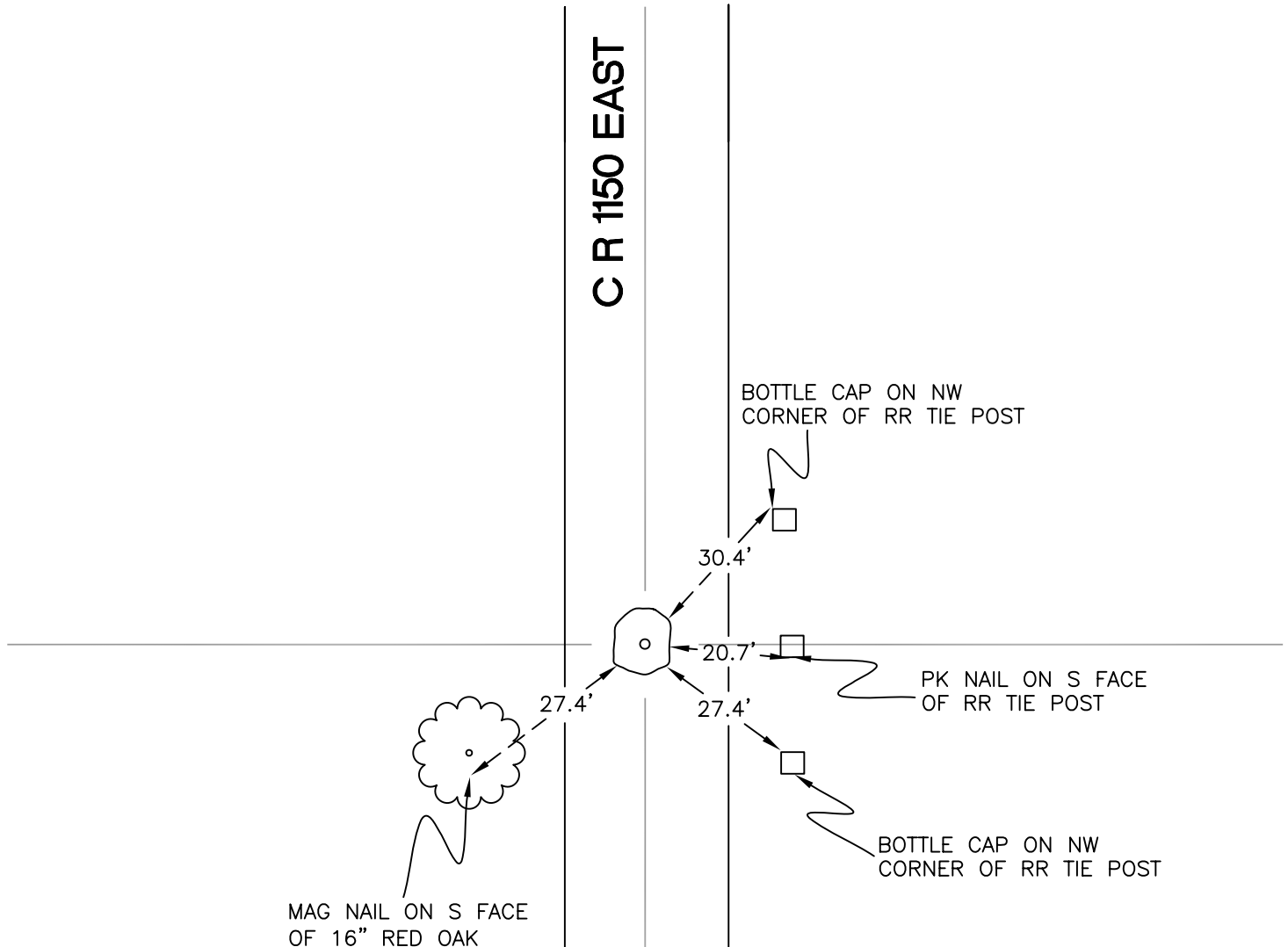
T 32 N, R 1 W

R23

SECTION 24

SECTION 24

C R 1150 EAST



SECTION 25

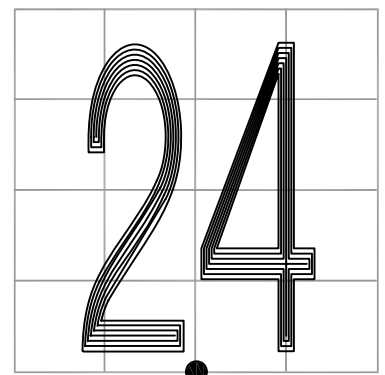
SECTION 25

MONUMENT: STONE w/ DRILL HOLE

PARTY: JL/AO

DATE: 6/6/12

COMMENTS: HOLE DRILLED IN STONE TO CORRESPOND TO TO DISTANCES TO NUMEROUS REFERENCES. STONE SET ON TOP OF STAKE IN 1898. FOUND BY BUCKINGHAM IN 1975 AND GH IN 1977.



CORNER LOCATION IN THE SECTION

R23