

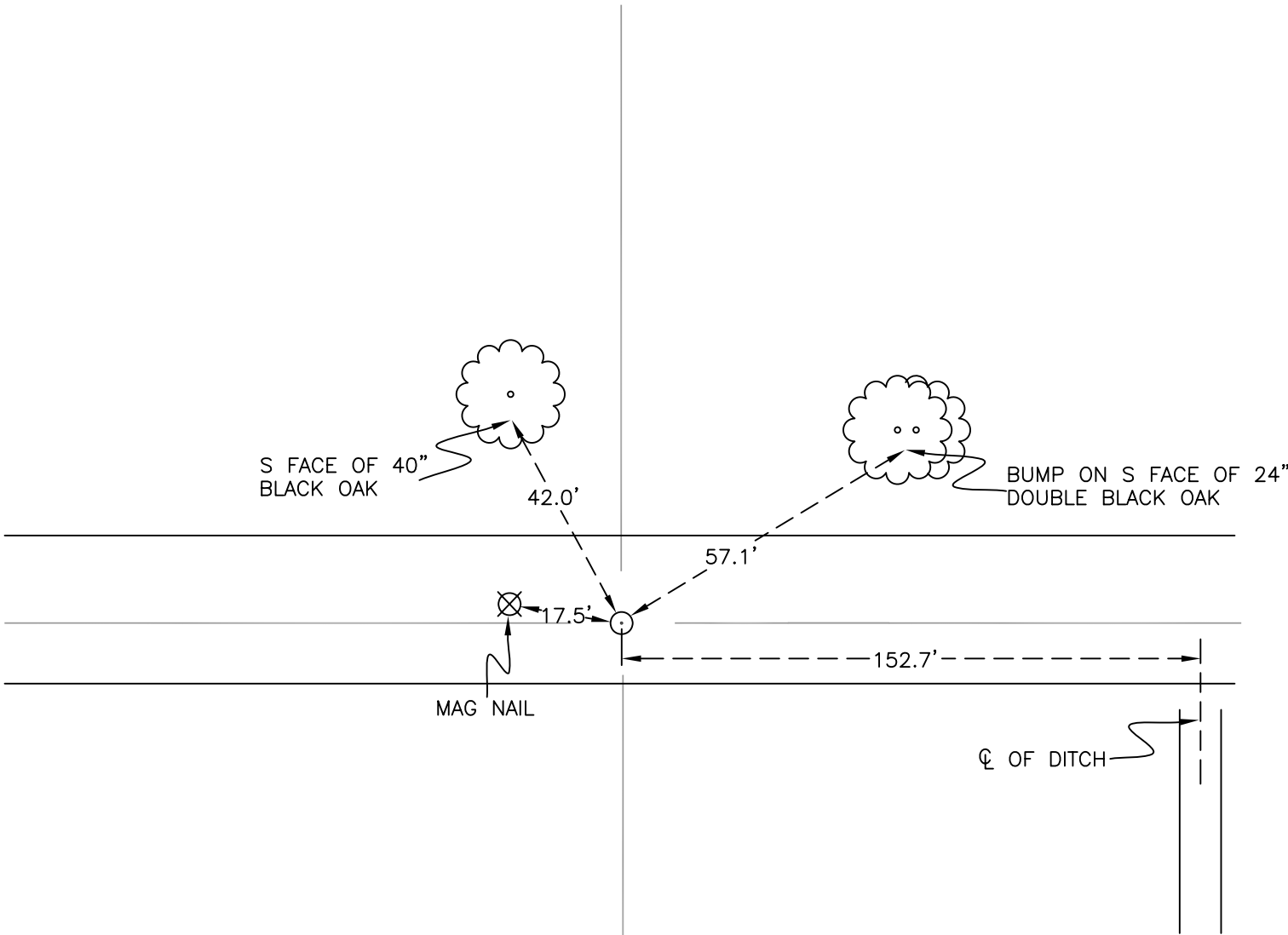
RAILROAD TOWNSHIP

T 32 N, R 4 W

R23

SECTION 24

SECTION 24



SECTION 25

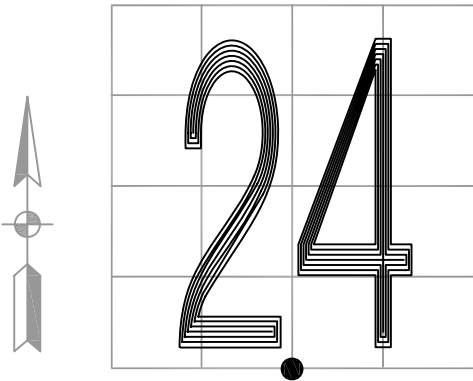
SECTION 25

MONUMENT: RAIL BOLT

PARTY: DPS/JL

DATE: 3/19/2015

COMMENTS: MONUMENT IS 2½' S OF ϕ OF 700 S.
 FOUND BY TERRITORIAL ENGINEERING
 IN 2013; USED IN SURVEY DOCUMENT #
 2014000174.



CORNER LOCATION IN THE SECTION

R23