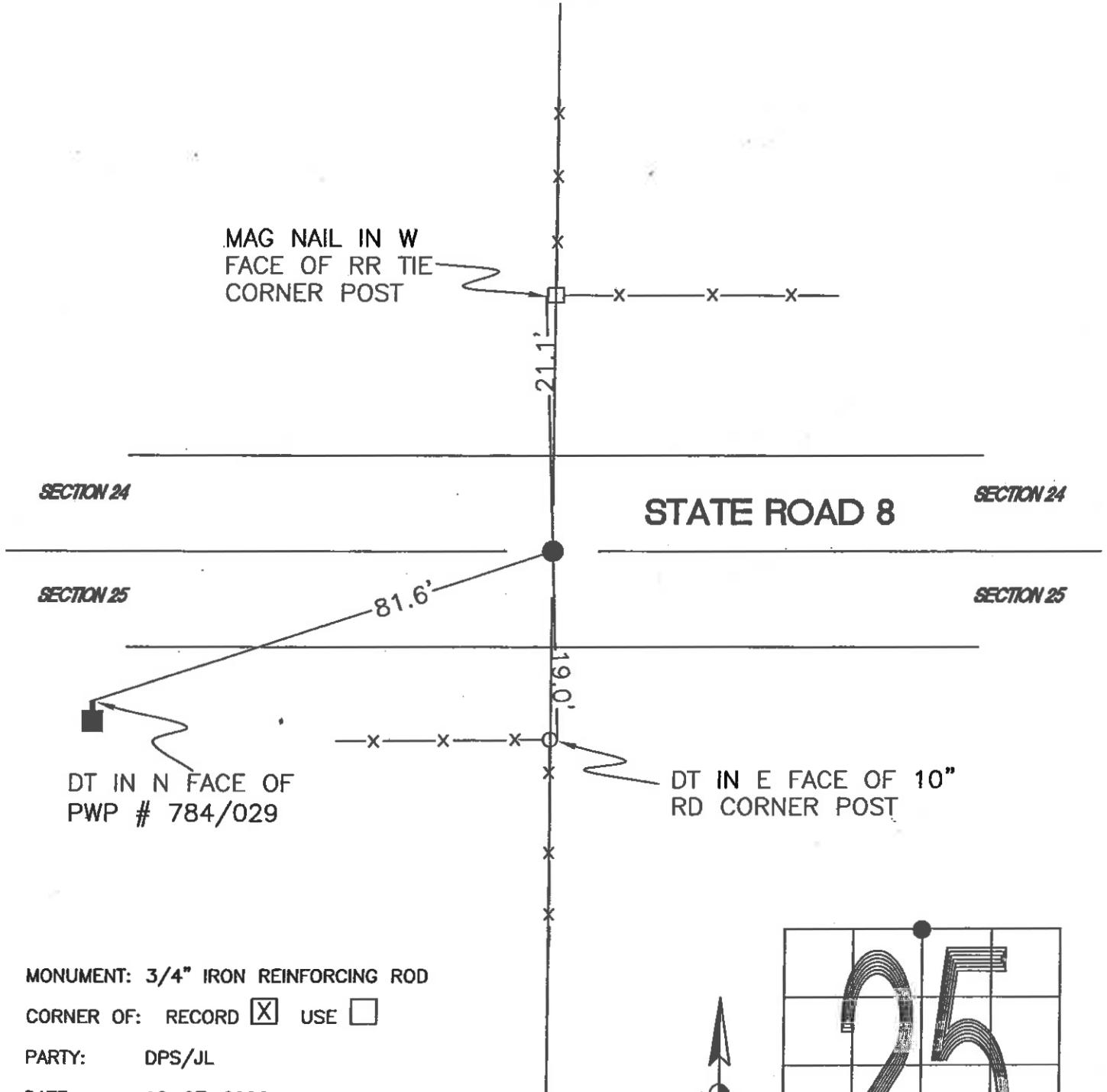


WASHINGTON TOWNSHIP  
T 33 N, R 1 W  
R23



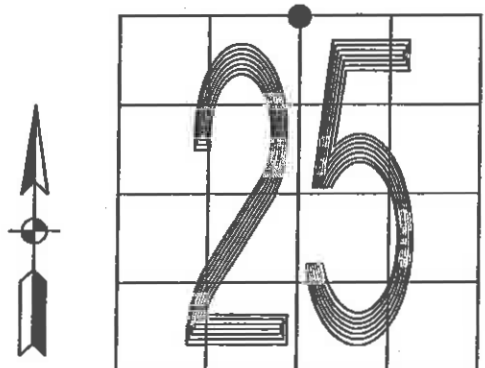
MONUMENT: 3/4" IRON REINFORCING ROD

CORNER OF: RECORD  USE

PARTY: DPS/JL

DATE: 12-07-2006

COMMENTS: RE-ROD REPLACED WITH RE-ROD © RESURFACING



CORNER LOCATION IN THE SECTION