

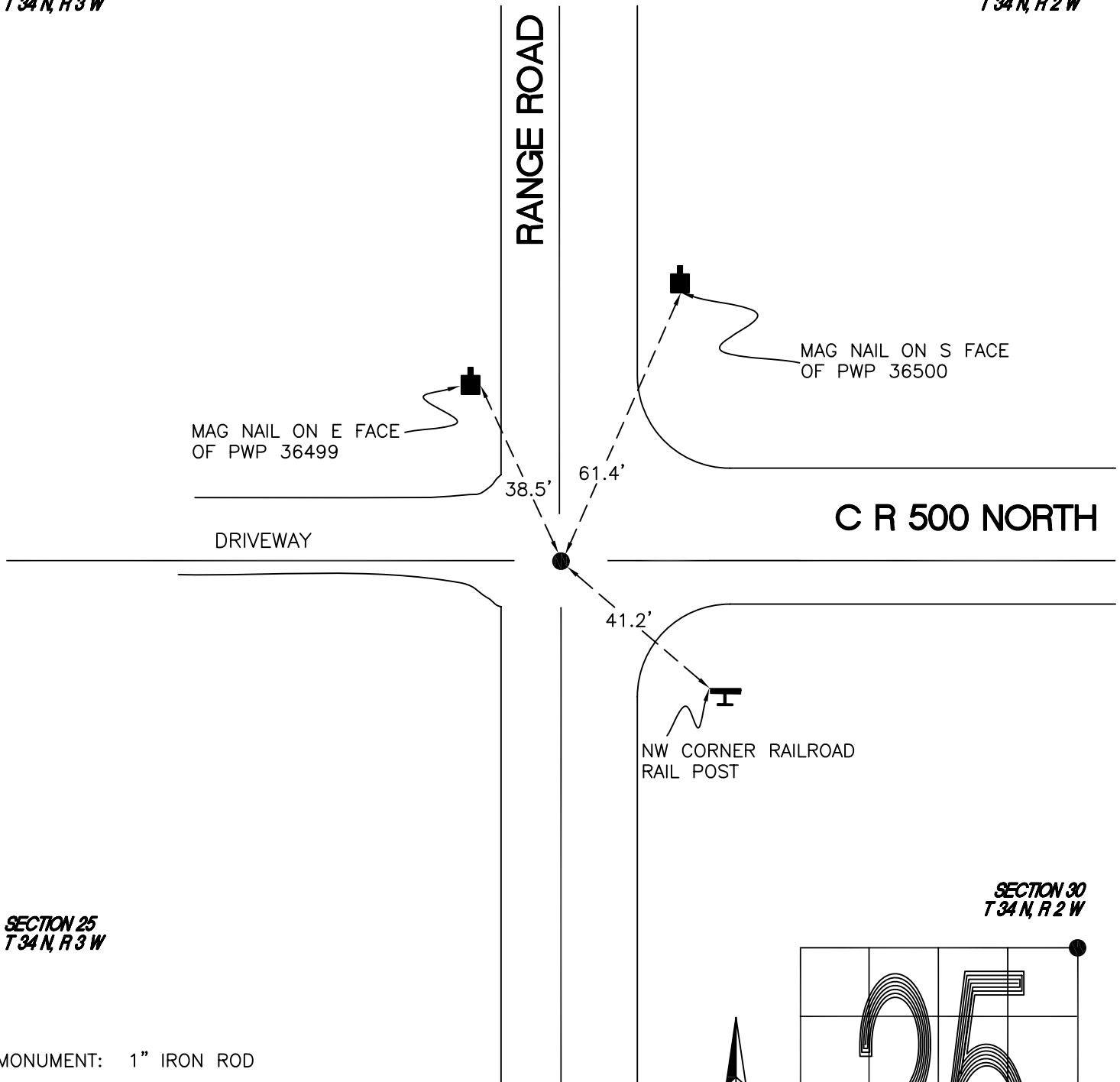
DAVIS TOWNSHIP

T 34 N, R 3 W

R25

SECTION 24
T 34 N, R 3 W

SECTION 19
T 34 N, R 2 W



SECTION 25
T 34 N, R 3 W

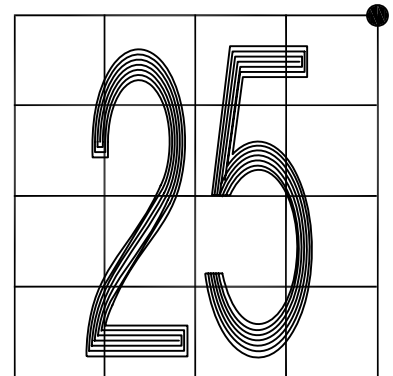
SECTION 30
T 34 N, R 2 W

MONUMENT: 1" IRON ROD

PARTY: DPS/JL

DATE: 5-12-16

COMMENTS: MONUMENT IS 3' S OF ϕ OF 500N AND 1.5' W OF ϕ OF RANGE ROAD. FOUND BY DWC/SJF IN 1990.



CORNER LOCATION IN THE SECTION

R25