

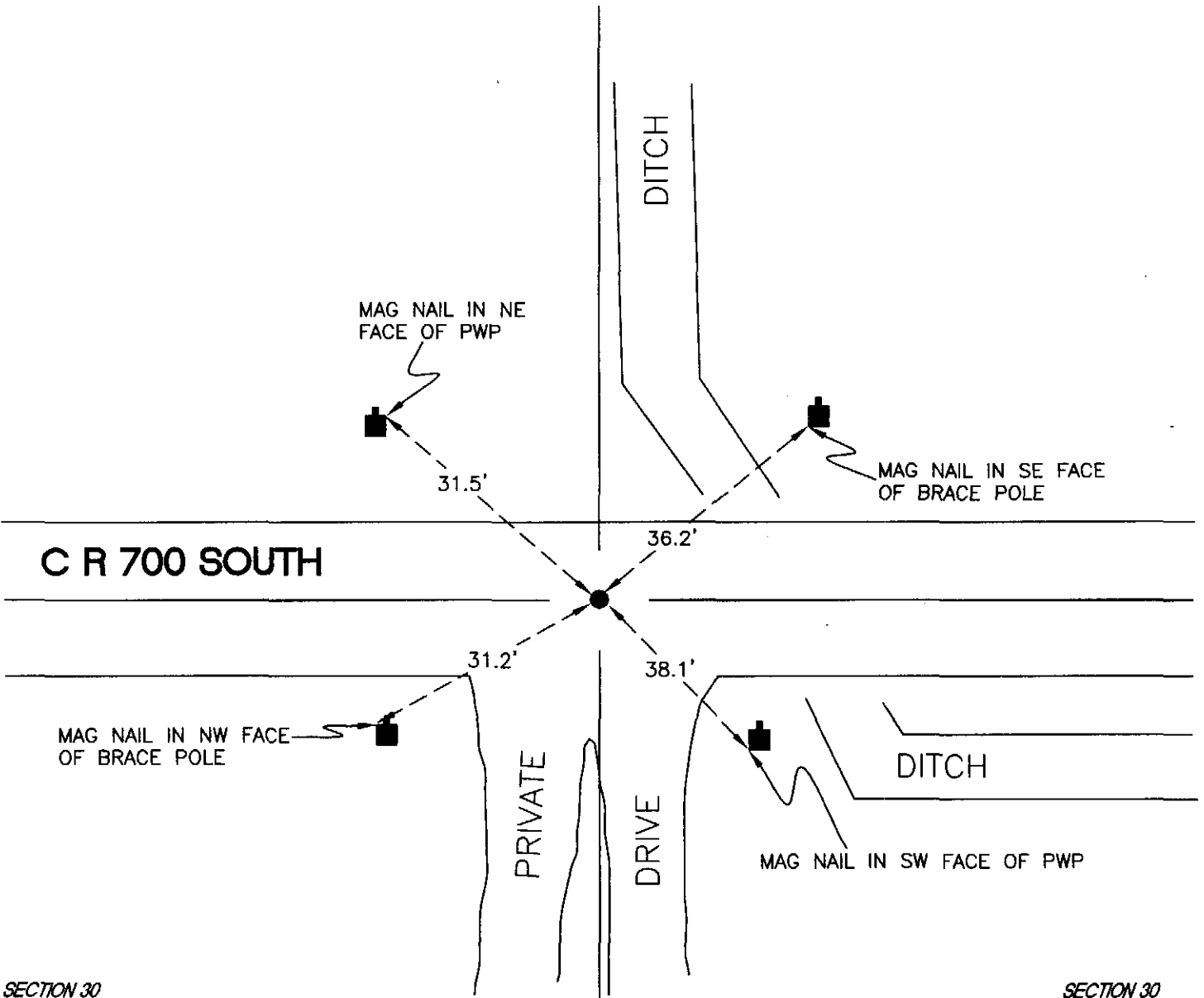
# WAYNE TOWNSHIP

T 32 N, R 3 W

## R3

SECTION 19

SECTION 19



SECTION 30

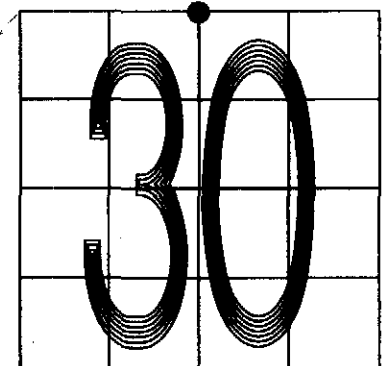
SECTION 30

MONUMENT: 1/4" IRON ROD

PARTY: DPS/RZ

DATE: 6/30/2011

COMMENTS:



CORNER LOCATION IN THE SECTION

## R3