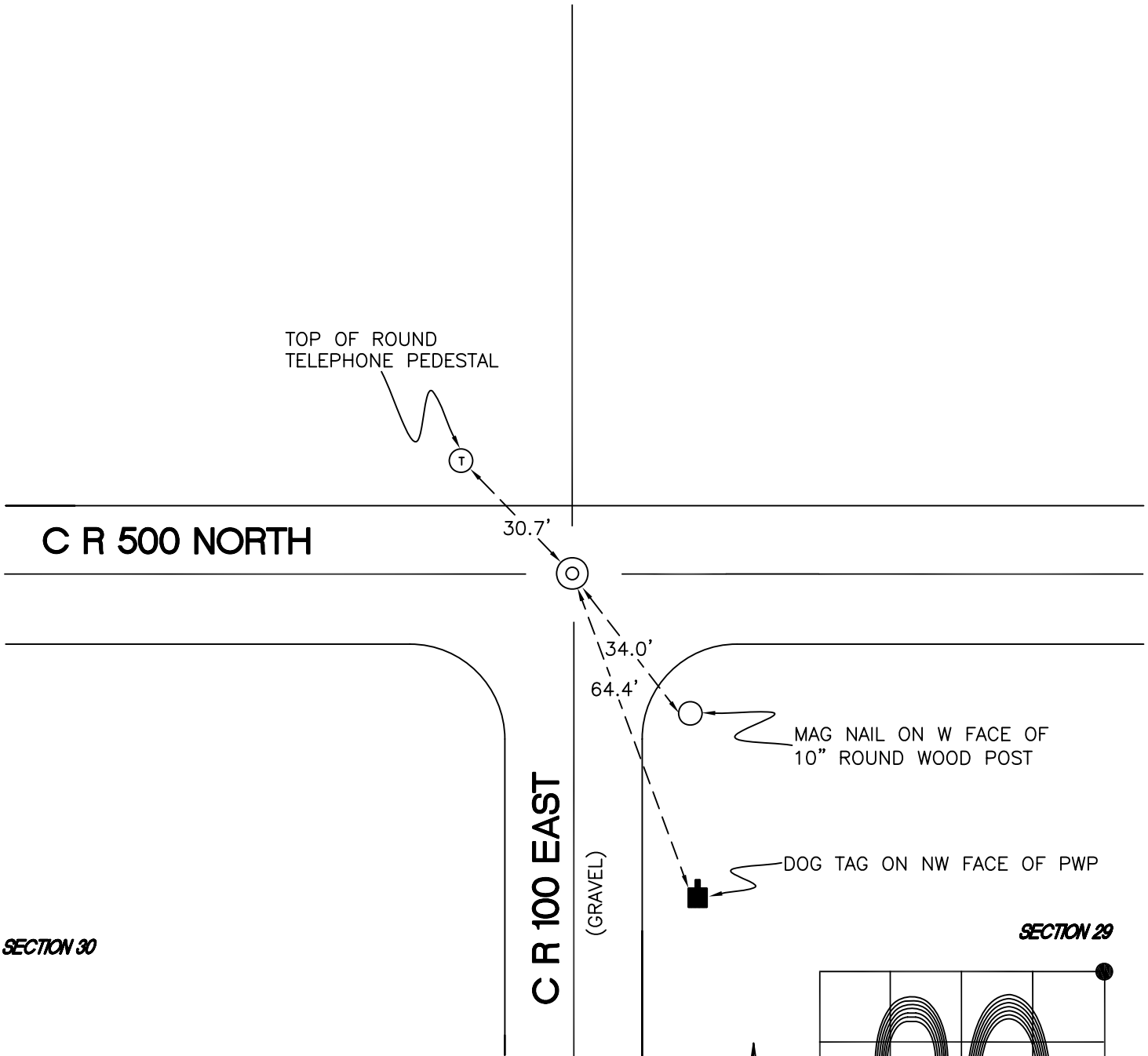


DAVIS TOWNSHIP
T 34 N, R 2 W
R5

SECTION 19

SECTION 20



SECTION 30

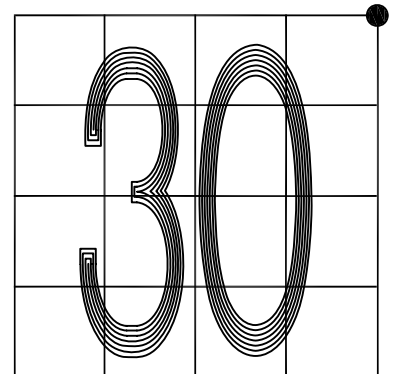
SECTION 29

MONUMENT: 2" WELL PIPE w/ 1/2" IRON PIPE INSIDE

PARTY: DPS/JL

DATE: 5-12-16

COMMENTS: FOUND BY VHJ IN 1985.



CORNER LOCATION IN THE SECTION

R5