

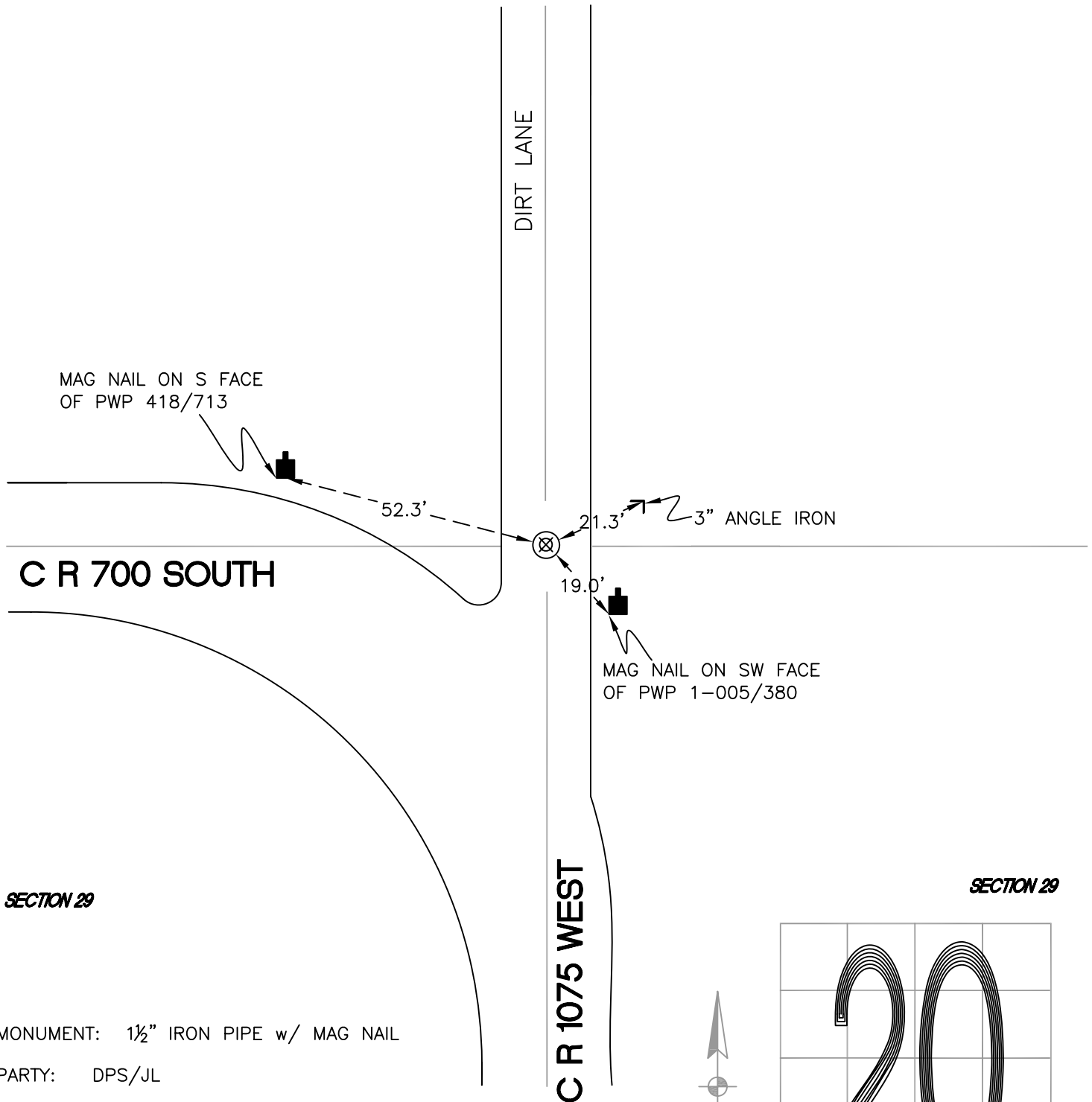
# RAILROAD TOWNSHIP

T 32 N, R 4 W

## R6

SECTION 20

SECTION 20



SECTION 29

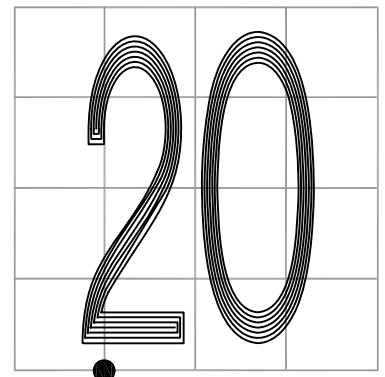
SECTION 29

MONUMENT: 1½" IRON PIPE w/ MAG NAIL

PARTY: DPS/JL

DATE: 3/19/2015

COMMENTS: FOUND BY TERRITORIAL ENGINEERING IN 2013.



CORNER LOCATION IN THE SECTION

## R6