

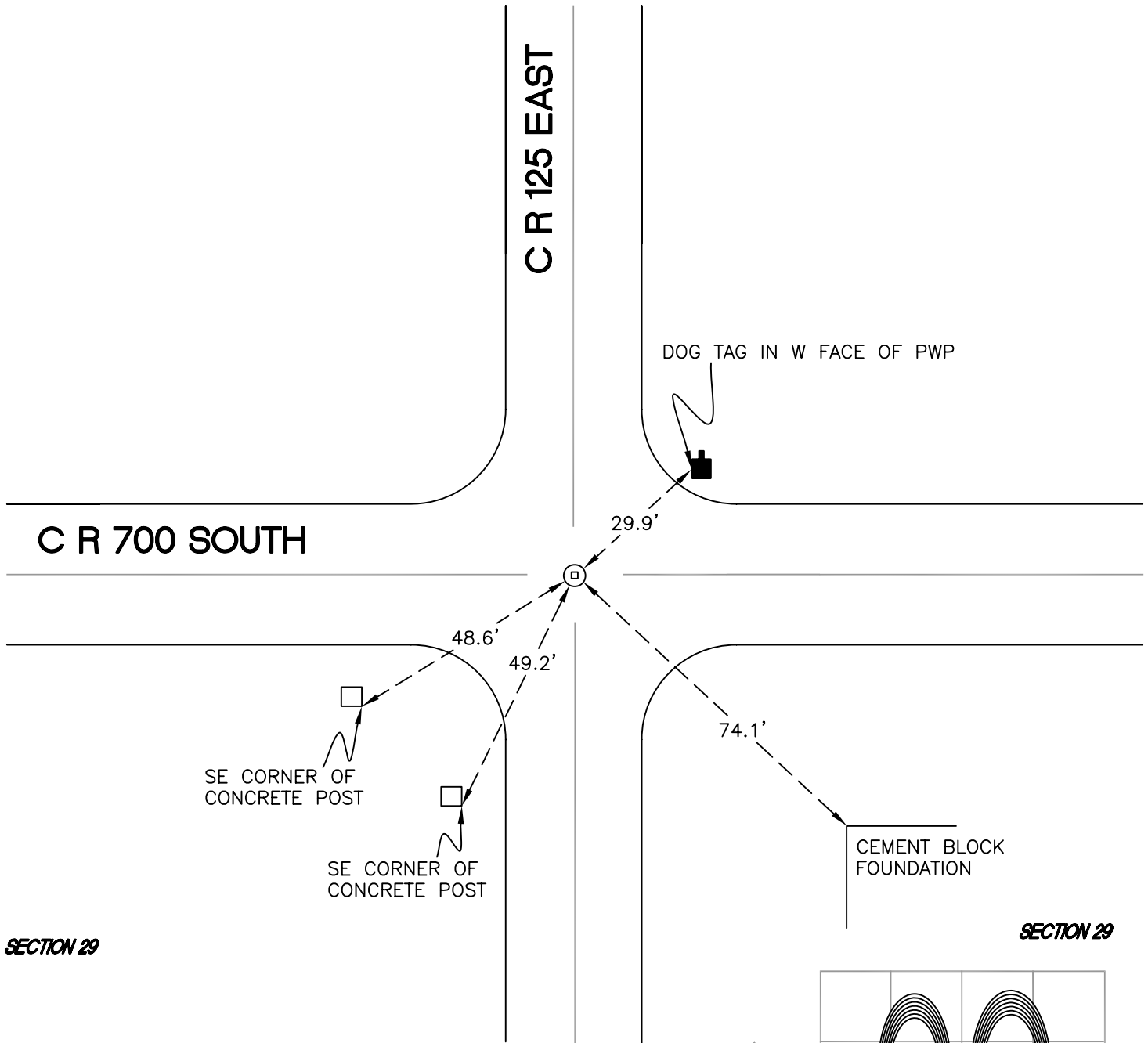
CALIFORNIA TOWNSHIP

T 32 N, R 2 W

R6

SECTION 20

SECTION 20

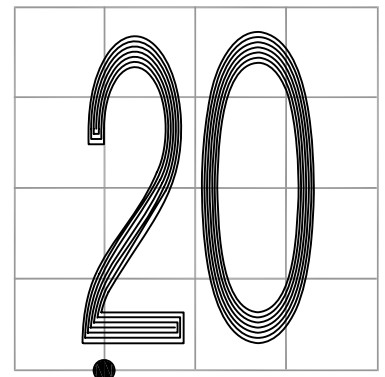


MONUMENT: RR CROSSING BOLT REPLACES PK NAIL OVER 8" STONE 1½' BELOW ROAD.

PARTY: DPS/JL

DATE: 7/15/14

COMMENTS: STONE FOUND BY CETA IN 1977 AND AND SJF IN 1986. DID NOT SEARCH FOR STONE IN 2014. DISTANCES FROM REFERENCES TO MONUMENT WERE THE SAME AS IN 1986.



CORNER LOCATION IN THE SECTION

R6