

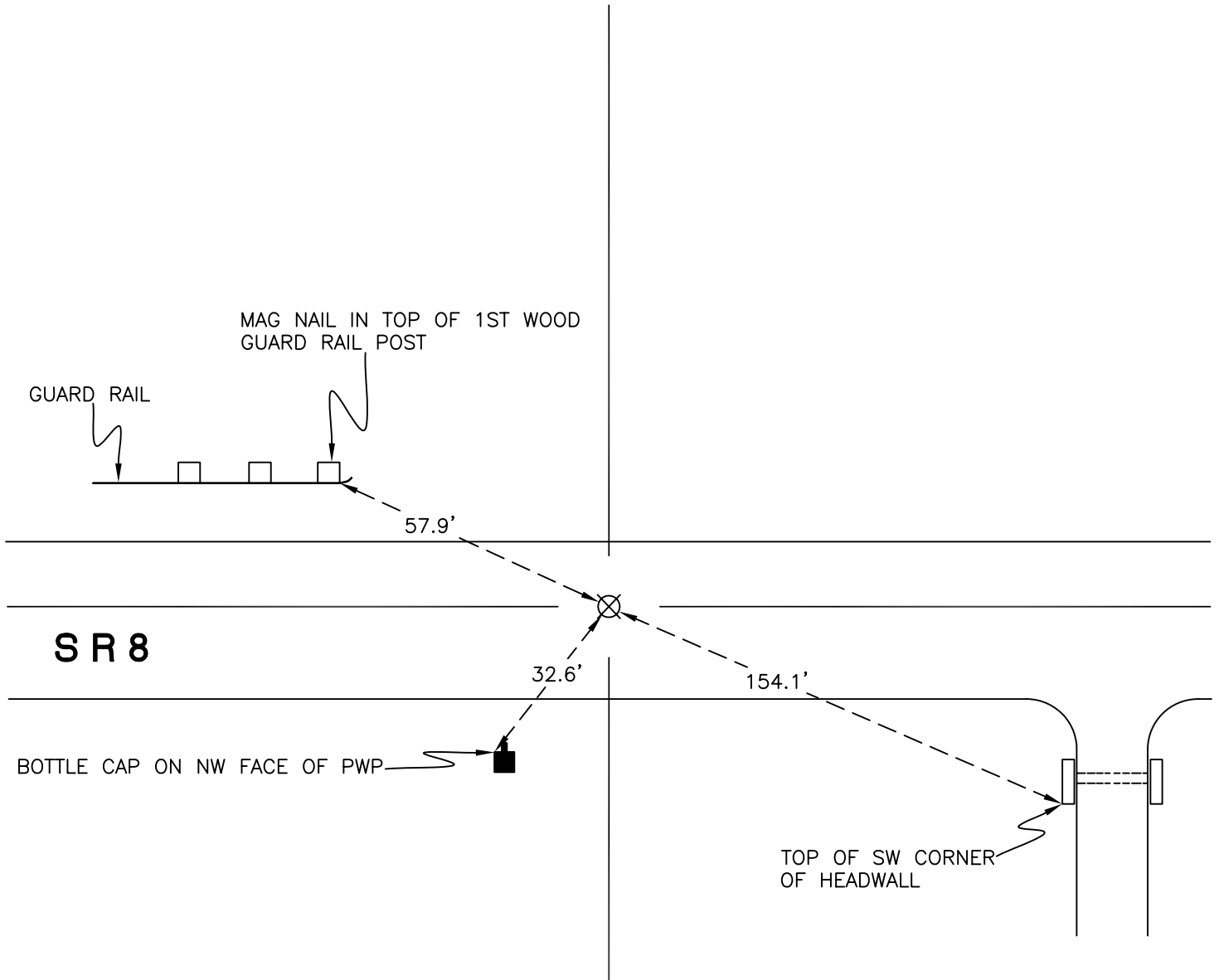
# WASHINGTON TOWNSHIP

T 33 N, R 1 W

## R7

SECTION 20

SECTION 20



SECTION 29

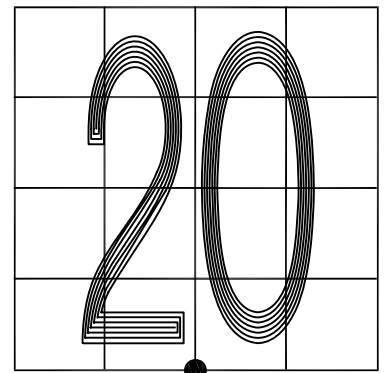
SECTION 29

MONUMENT: MAG SPIKE w/ PLASTIC WASHER

PARTY: VHJ/MSL

DATE: 3-17-2009

COMMENTS: MONUMENT IS 2' N OF  $\odot$  OF SR 8. ESTABLISHED BY WIGHTMAN CRAMER IN SURVEY RECORDED IN BOOK MM, PAGE 680. SET BY TERRITORIAL ENGINEERING IN SURVEY # 09-130.



CORNER LOCATION IN THE SECTION

## R7