

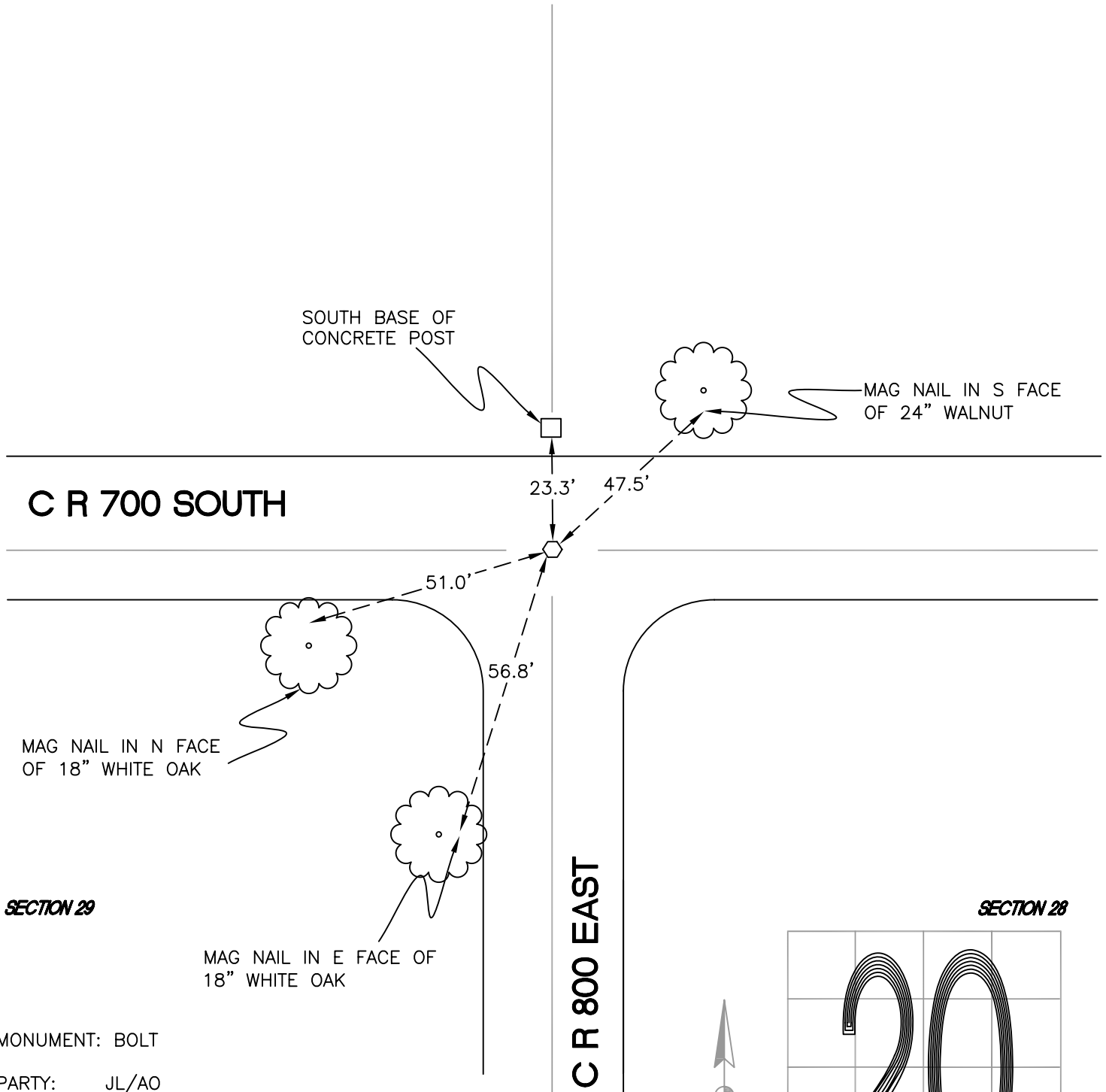
NORTH BEND TOWNSHIP

T 32 N, R 1 W

R9

SECTION 20

SECTION 21



SECTION 29

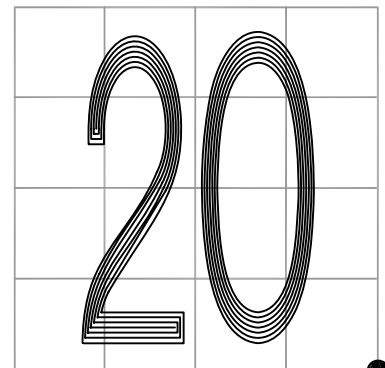
SECTION 28

MONUMENT: BOLT

PARTY: JL/AO

DATE: 6/6/12

COMMENTS: 2' S OF \odot OF 700 S.
FOUND IN 1977 BY ES.



CORNER LOCATION IN THE SECTION

R9