

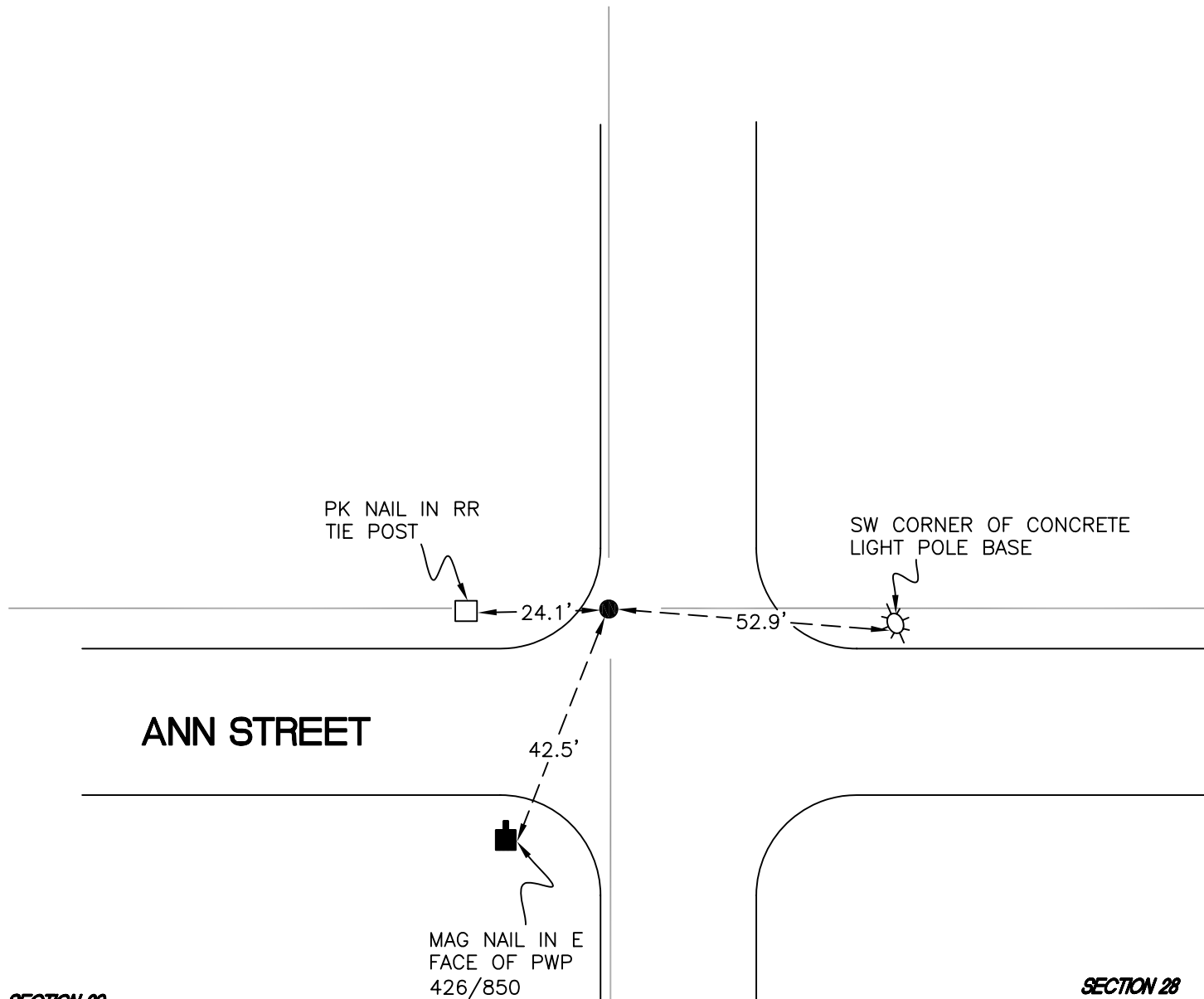
RAILROAD TOWNSHIP

T 32 N, R 4 W

R9

SECTION 20

SECTION 21



SECTION 29

SECTION 28

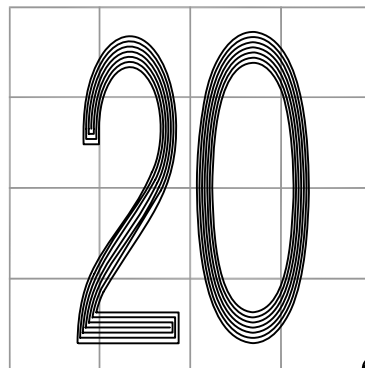
MONUMENT: 1" IRON ROD

PARTY: DPS/JL

DATE: 3/19/2015

COMMENTS: 18.3' W OF ϕ OF U S 421; 22.0' N OF ϕ OF ANN STREET. FOUND BY WIGHTMAN CRAMER IN 1995. USED BY TERRITORIAL ENGINEERING IN 2013 SURVEY.

U S 421



CORNER LOCATION IN THE SECTION

R9