

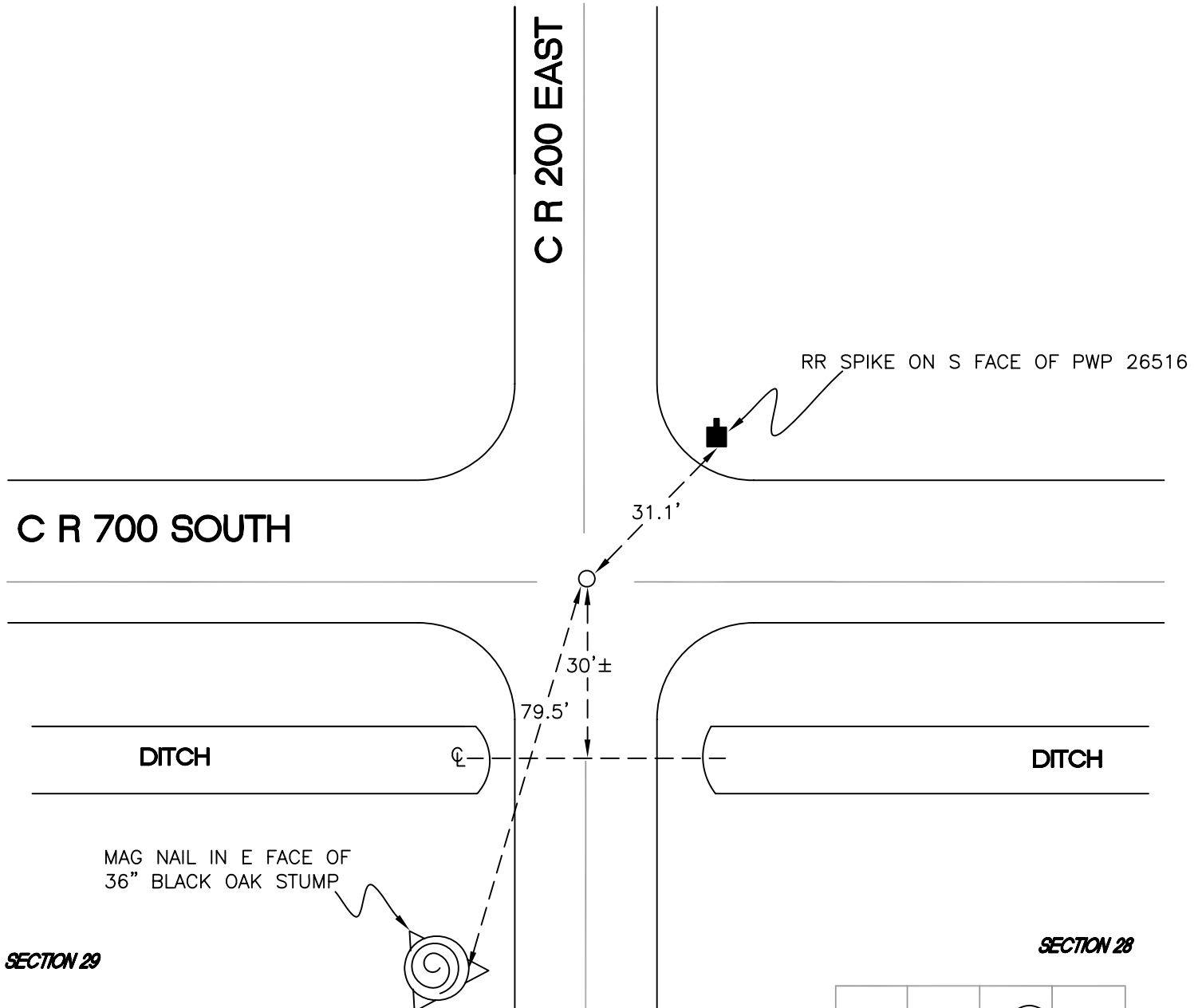
CALIFORNIA TOWNSHIP

T 32 N, R 2 W

R9

SECTION 20

SECTION 21



SECTION 29

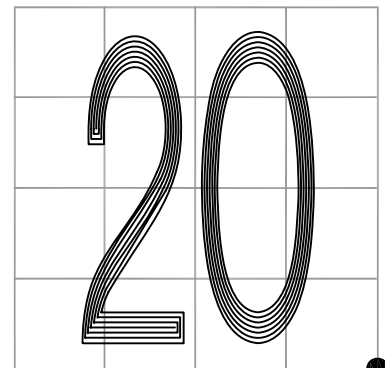
SECTION 28

MONUMENT: 1/2" IRON PIPE w/ PIPE CAP

PARTY: DPS/JL

DATE: 7/15/14

COMMENTS: MONUMENT IS 7' S OF CL OF 700 S AND 4" BELOW GRADE.
FOUND IN 1986 BY SJF AND 1977.



CORNER LOCATION IN THE SECTION

R9