

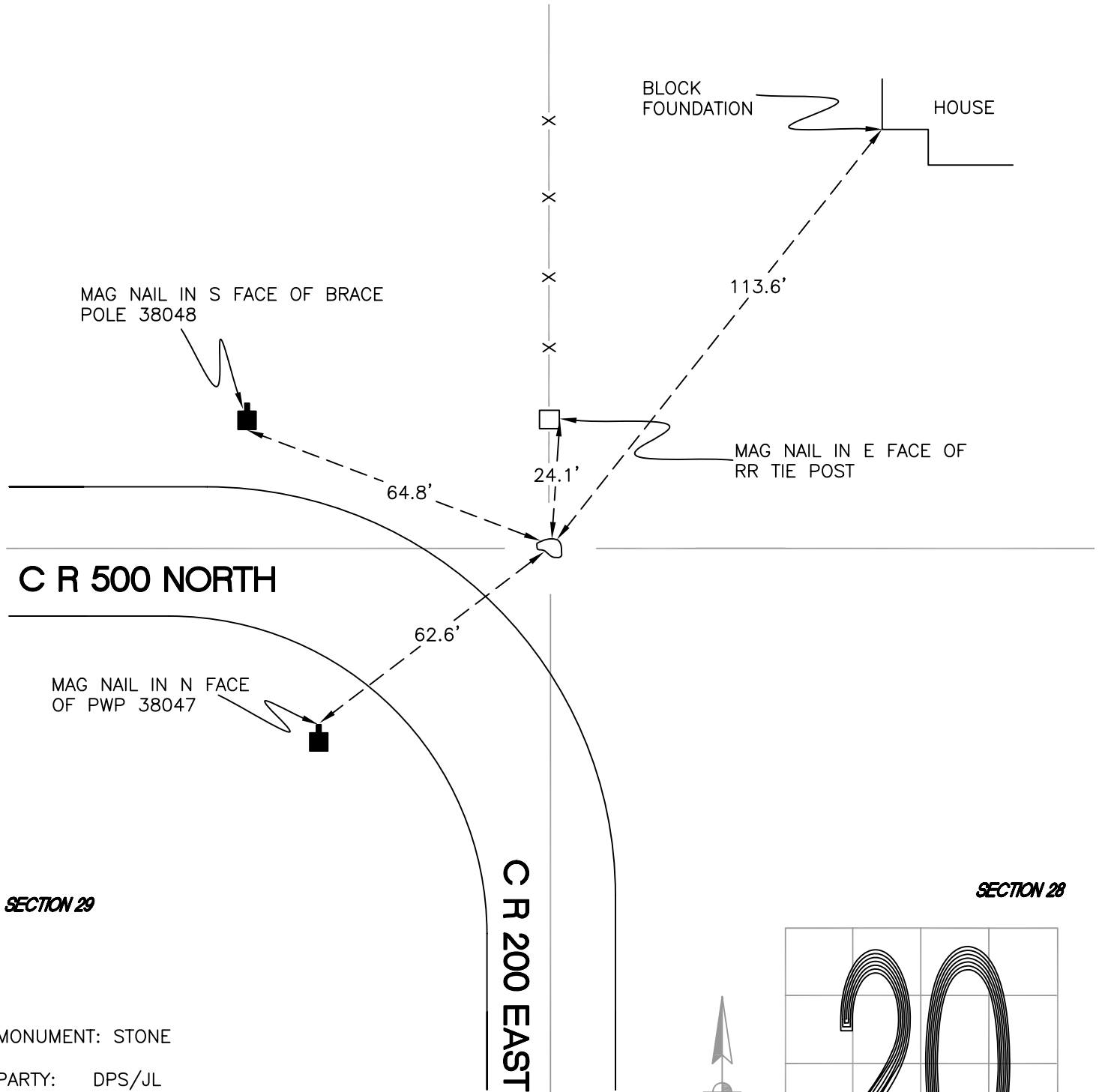
DAVIS TOWNSHIP

T 34 N, R 2 W

R9

SECTION 20

SECTION 21

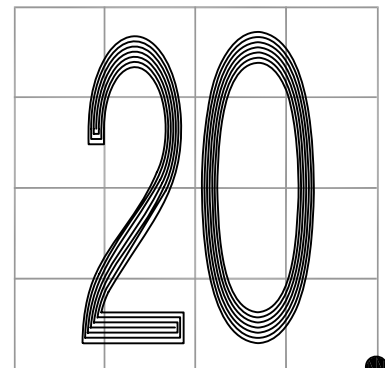


MONUMENT: STONE

PARTY: DPS/JL

DATE: 3/17/16

COMMENTS: 2" BELOW GRADE. MAG NAIL IS INDICATOR. STONE SET IN 1899 BY SEIDOR AND FOUND BY DUSEK IN 1941 AND VHJ IN 1985.



CORNER LOCATION IN THE SECTION

R9