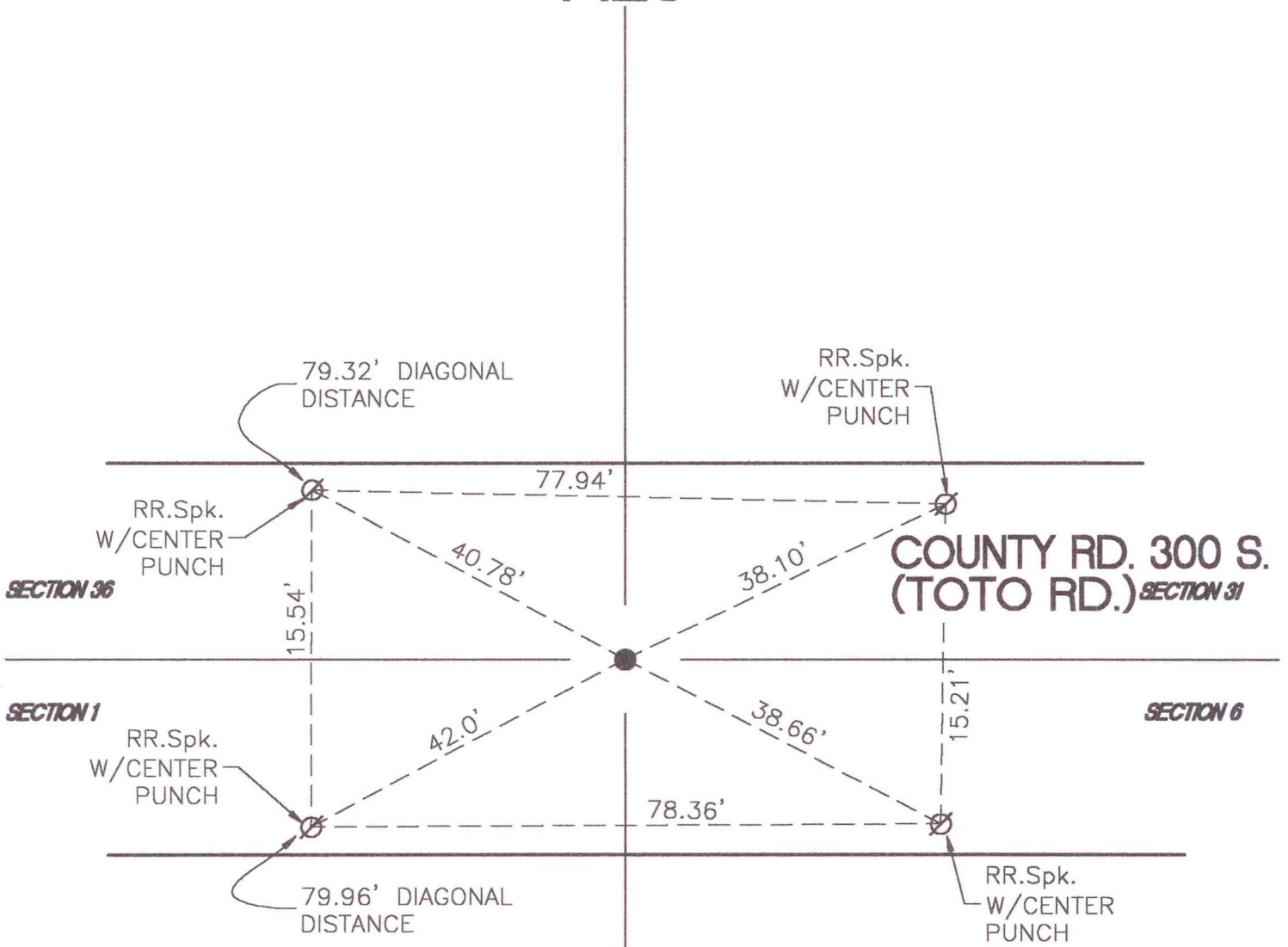


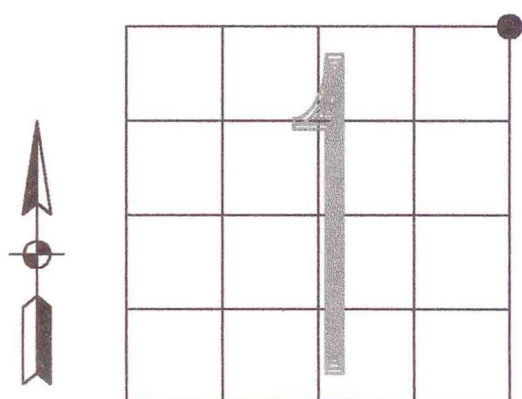
# RAILROAD TOWNSHIP

## T 32 N, R 4 W

### A25



MONUMENT: 3/4" IRON REINFORCING ROD  
 CORNER OF: RECORD  USE   
 PARTY: DLA  
 DATE: 7-90  
 COMMENTS: NONE



CORNER LOCATION IN THE SECTION