

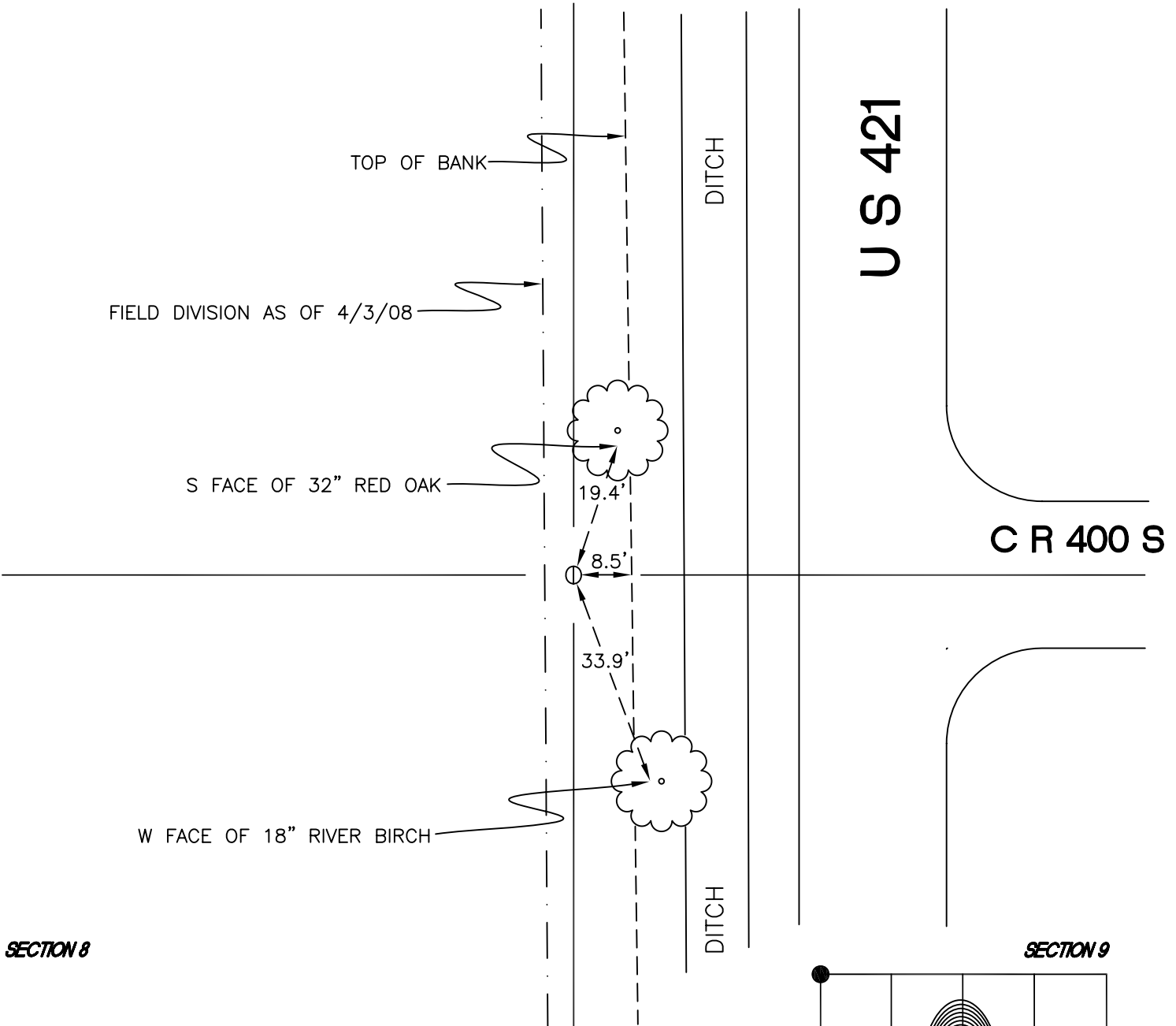
RAILROAD TOWNSHIP

T 32 N, R 4 W

E9

SECTION 5

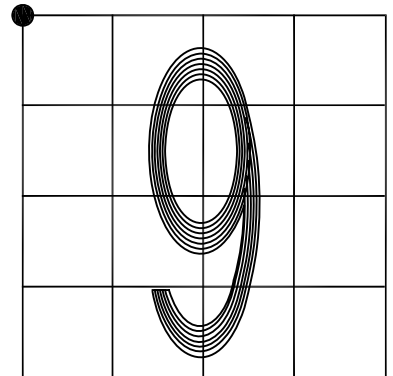
SECTION 4



SECTION 8

SECTION 9

MONUMENT: 3/4" PINCH PIPE
CORNER OF: RECORD USE
PARTY: JL/PM
DATE: 4-3-2008
COMMENTS: 8" BELOW GRADE.
FOUND IN 1932 BY C. E. PAUL WHILE DOING THE
COUNTY LINE SURVEY.



CORNER LOCATION IN THE SECTION

E9