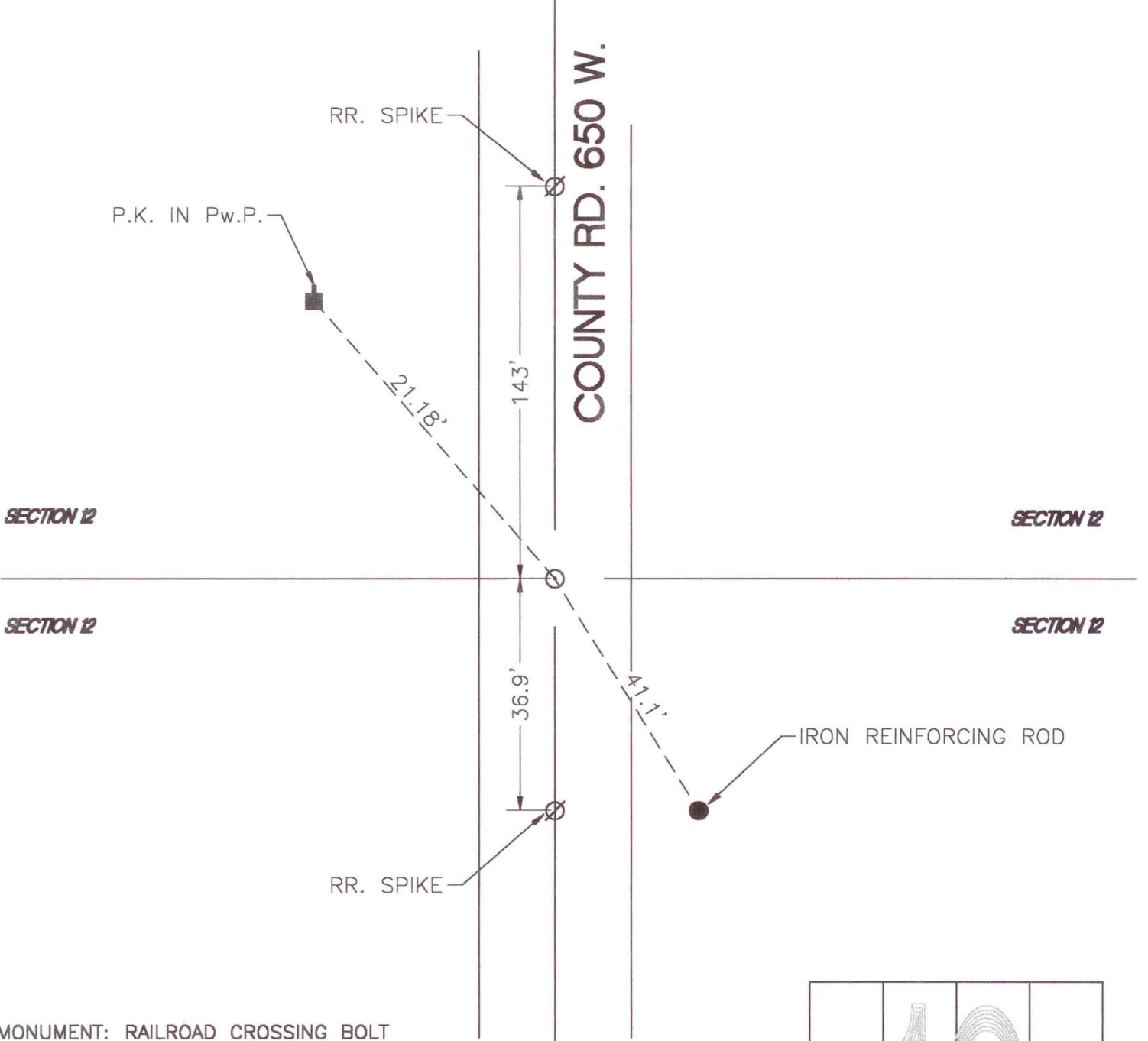


RAILROAD TOWNSHIP

T 32 N, R 4 W

G23

COUNTY RD. 650 W.



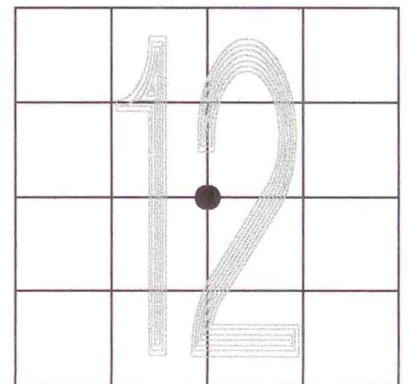
MONUMENT: RAILROAD CROSSING BOLT

CORNER OF: RECORD USE

PARTY: DWC

DATE: 3/16/2000

COMMENTS: NONE



CORNER LOCATION IN THE SECTION