

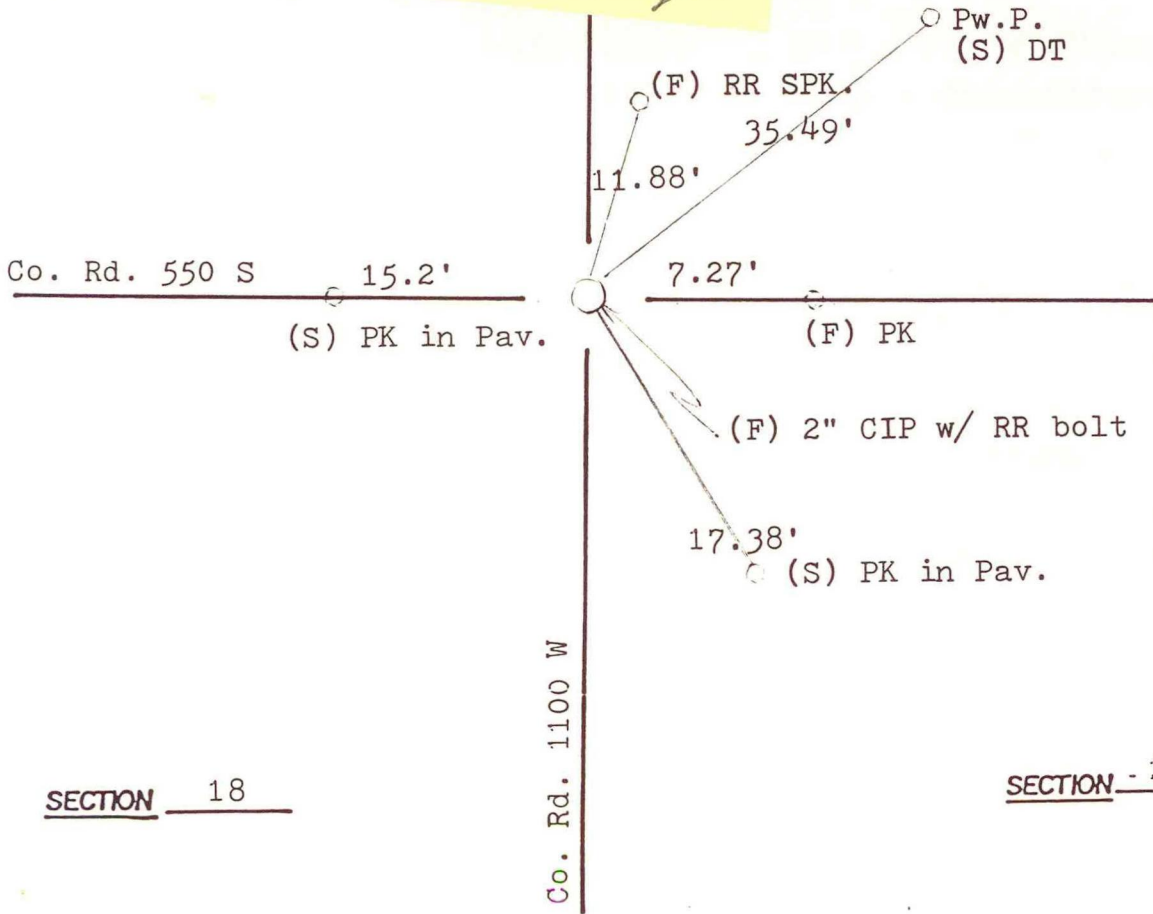
RAILROAD TOWNSHIP

T 32 N, R 4 W

SECTION 18

SECTION 17

*This Sec. Corner
is 150' East of
New-645.421
Curve changed.*



SECTION 18

SECTION 17

DATE	BY	DATE	BY
03Nov1982	REH		
28Jun1984	RLP		

CORNER OF: RECORD USE

SOURCE OF INFORMATION:

Field Book M-3, page 21b
Field Book M-9, page 6

L-5