

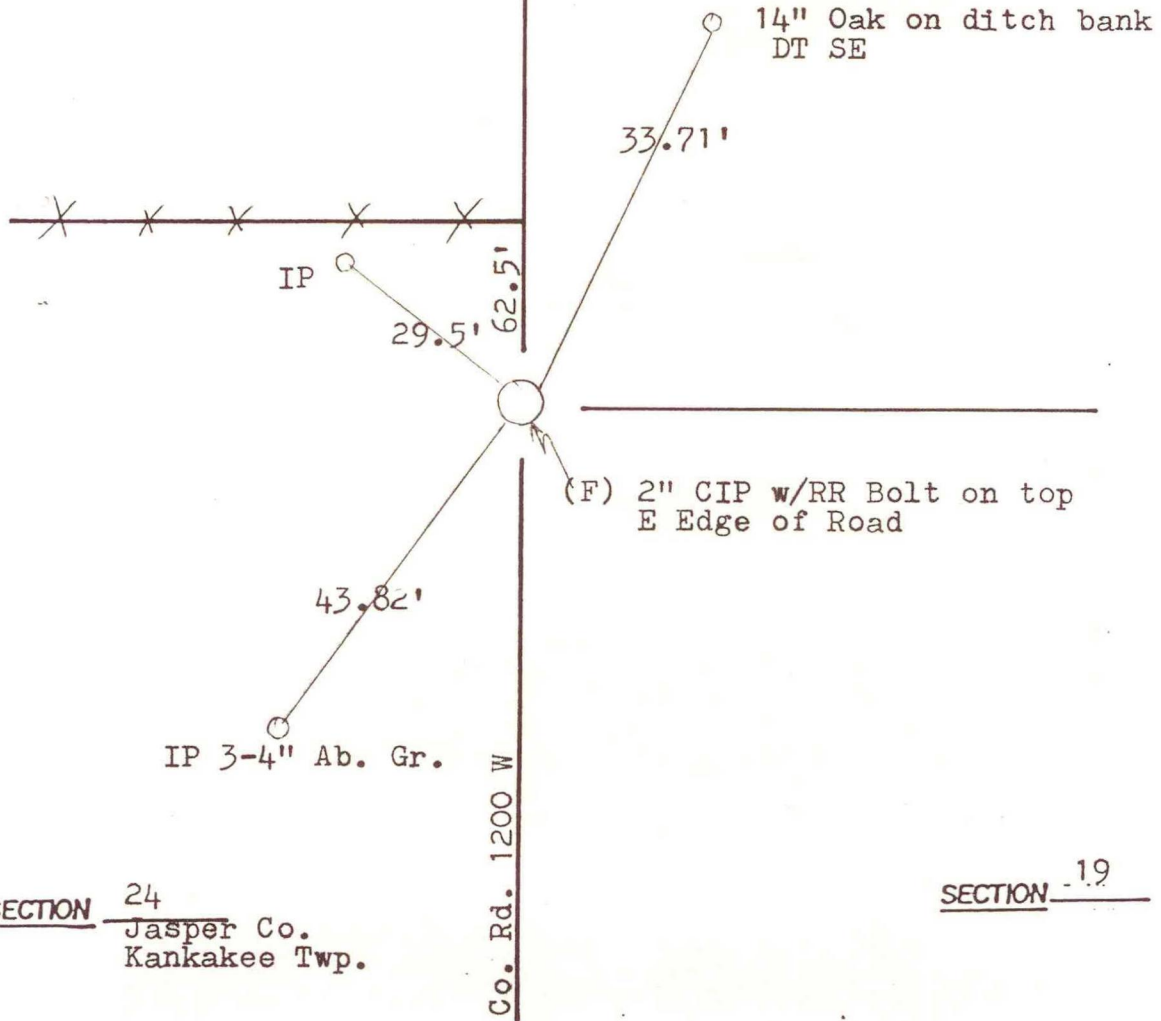
RAILROAD TOWNSHIP

T 32 N, R 4 W

Jasper Co., Kankakee Twp.

SECTION 13

SECTION 18



SECTION 24
Jasper Co.
Kankakee Twp.

SECTION 19

DATE	BY	DATE	BY
28Jun1984	RLP		
1985	SJF		

CORNER OF: RECORD USE

SOURCE OF INFORMATION:

Field Book M-9, page 9
Territorial Engineering Field Notes

N-1