

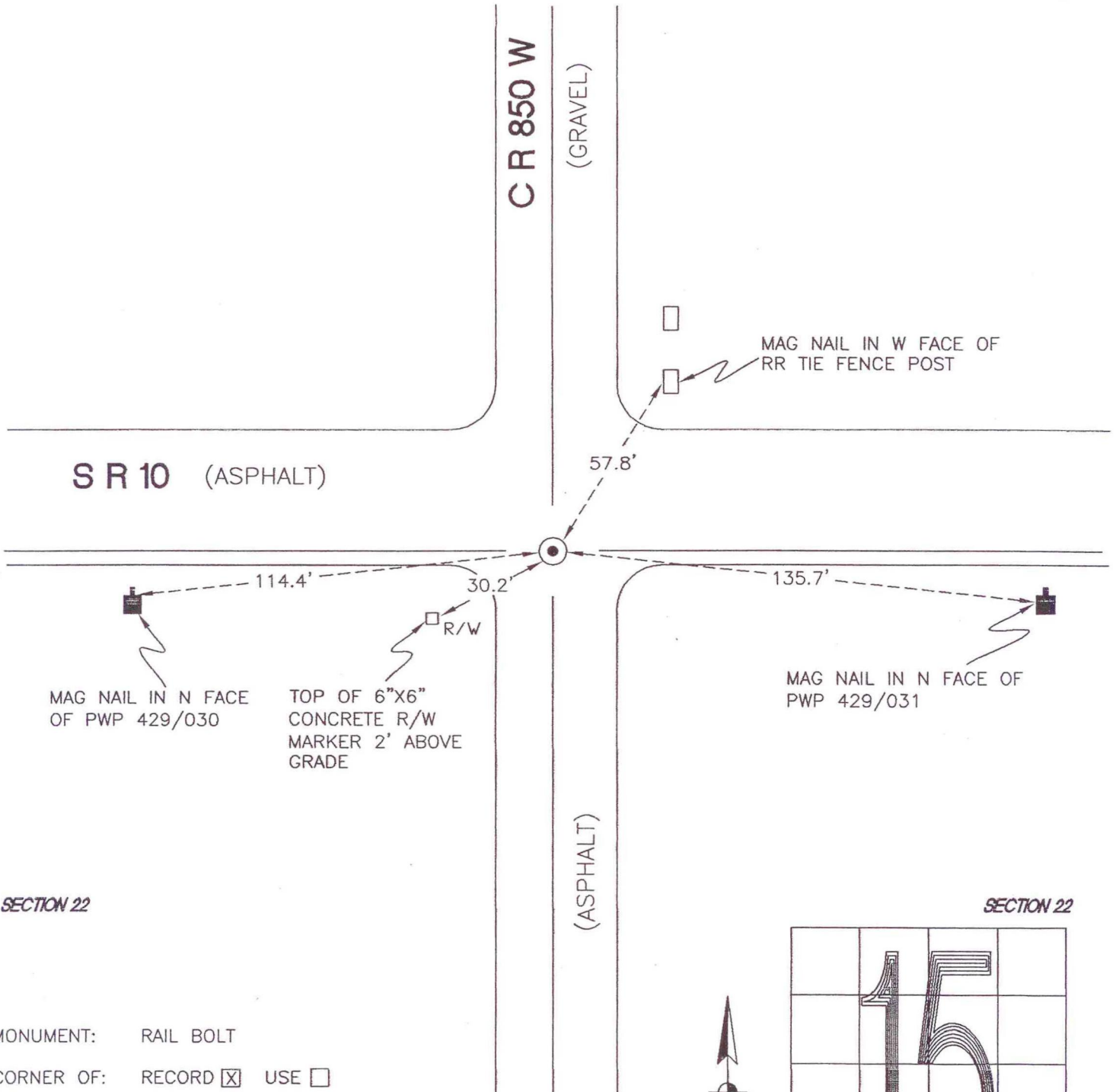
RAILROAD TOWNSHIP

T 32 N, R 4 W

N15

SECTION 15

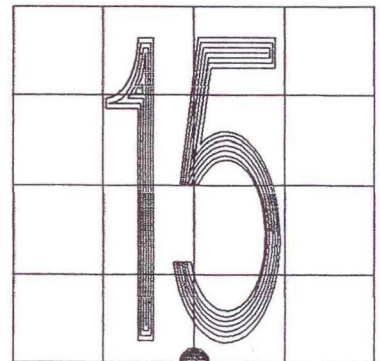
SECTION 15



SECTION 22

SECTION 22

MONUMENT: RAIL BOLT
CORNER OF: RECORD USE
PARTY: DPS/JL
DATE: 11-16-2007
COMMENTS: SET BY TERRITORIAL ENGINEERING ON 11-16-07
IN JOB #07236.
1' N OF THE S EDGE OF PAVEMENT OF SR 10.



CORNER LOCATION IN THE SECTION

N15