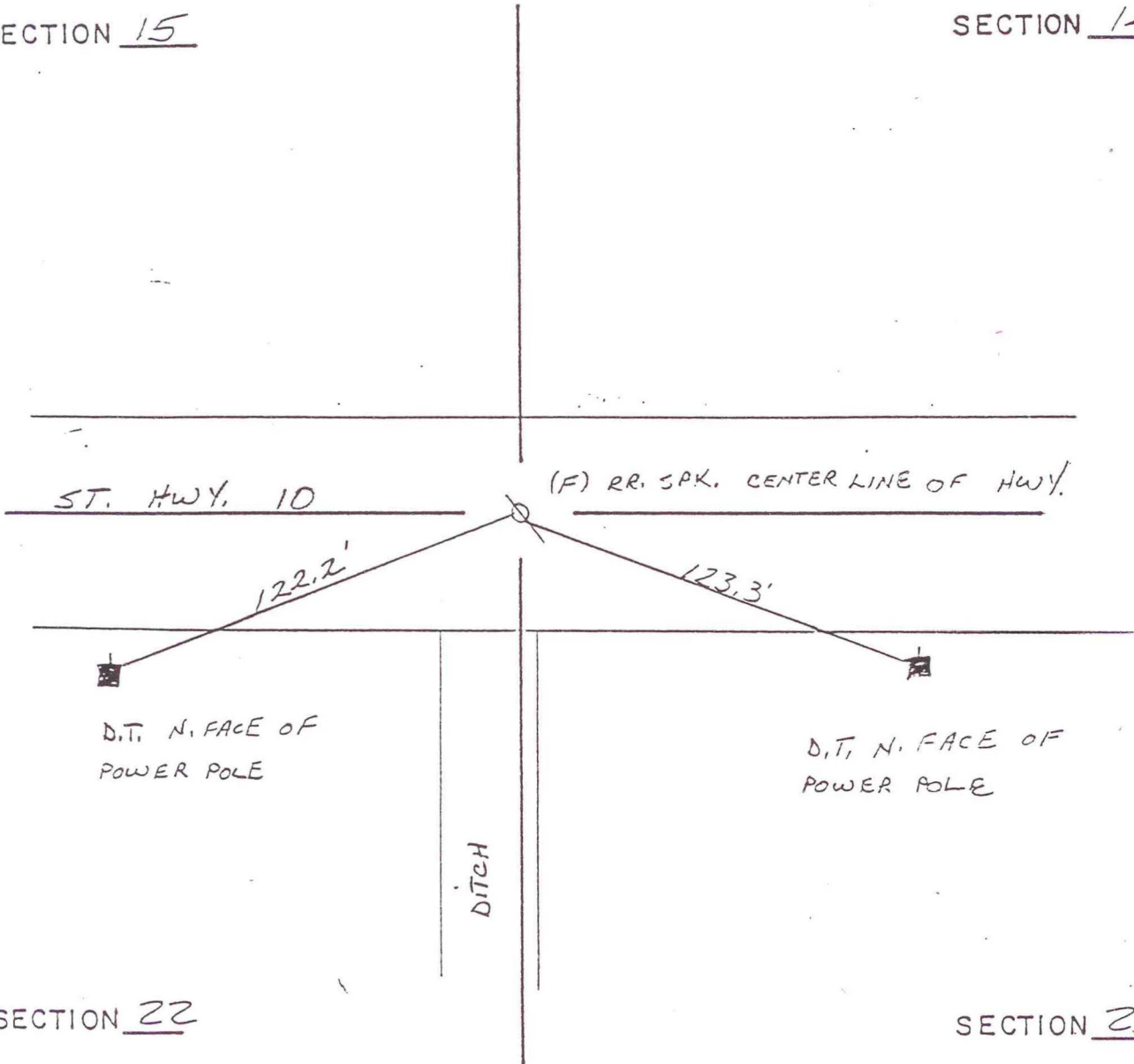


RAILROAD TOWNSHIP

T 32 N, R 4 W

SECTION 15

SECTION 14



SECTION 22

SECTION 23

DATE	BY	DATE	BY
5-4-91	A.W. D.W.C.		

CORNER OF: RECORD USE

SOURCE OF INFORMATION:

T.E, 1991

N-17