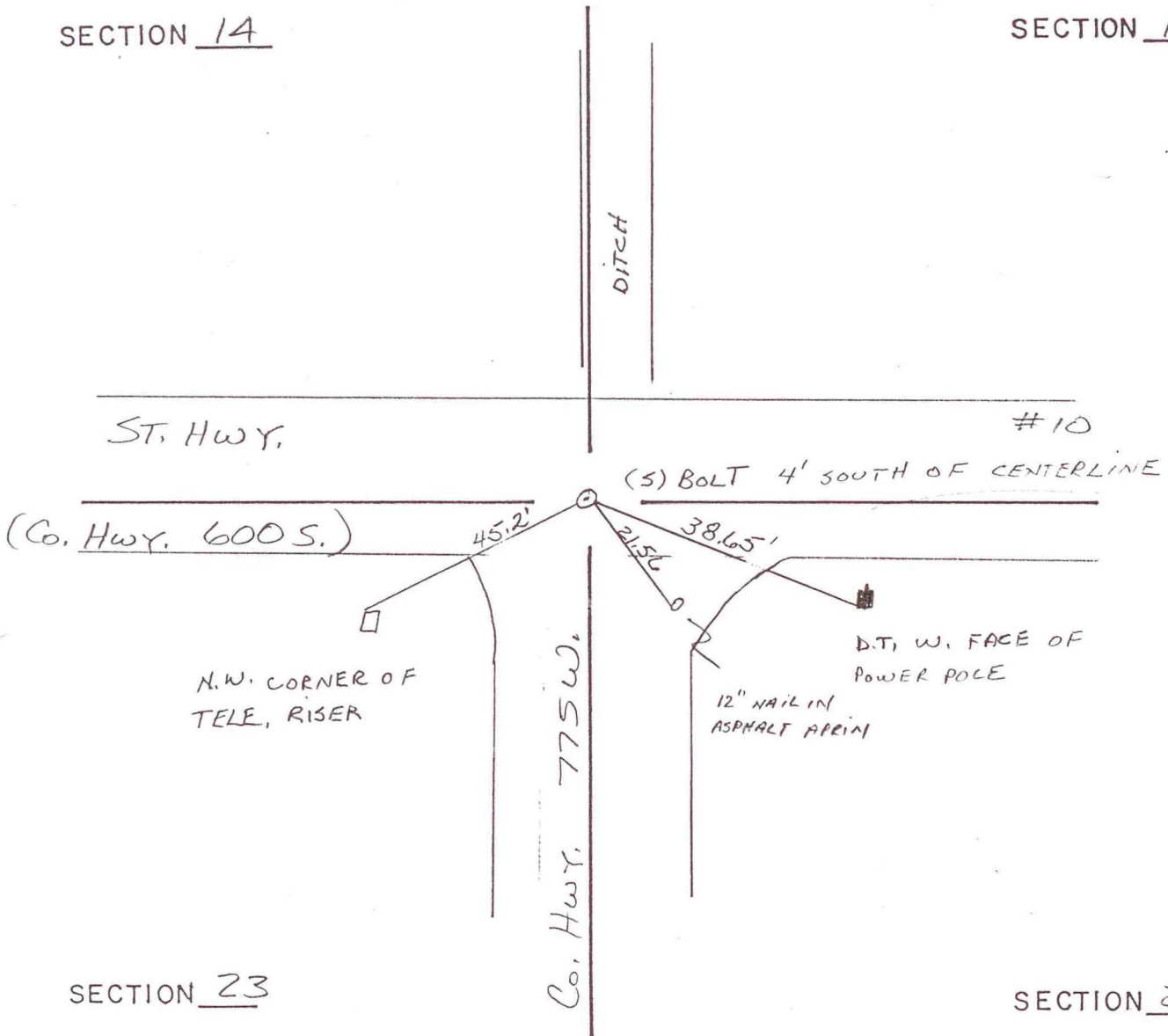


RAILROAD TOWNSHIP

T 32 N, R 4 W

SECTION 14

SECTION 14



SECTION 23

SECTION 23

DATE	BY	DATE	BY
5-4-91	A.W. D.W.C.		

CORNER OF: RECORD USE
 SOURCE OF INFORMATION:
 T.E. 1991

N-18