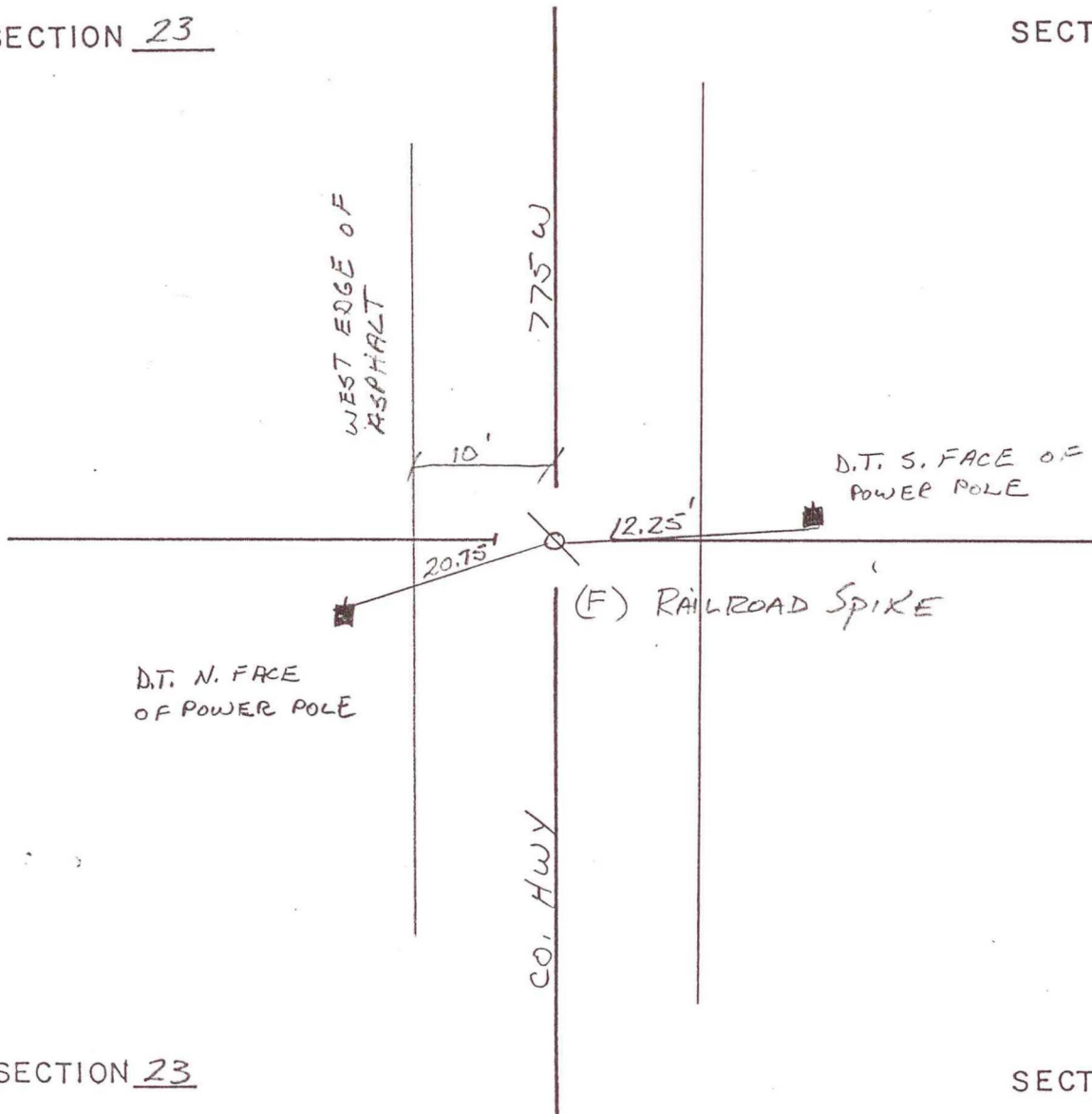


RAILROAD TOWNSHIP

T 32 N, R 4 W

SECTION 23

SECTION 23



SECTION 23

SECTION 23

DATE	BY	DATE	BY
5-4-91	A.W, D.W.C.		

CORNER OF: RECORD USE

SOURCE OF INFORMATION:

T.E. 1991

0-18