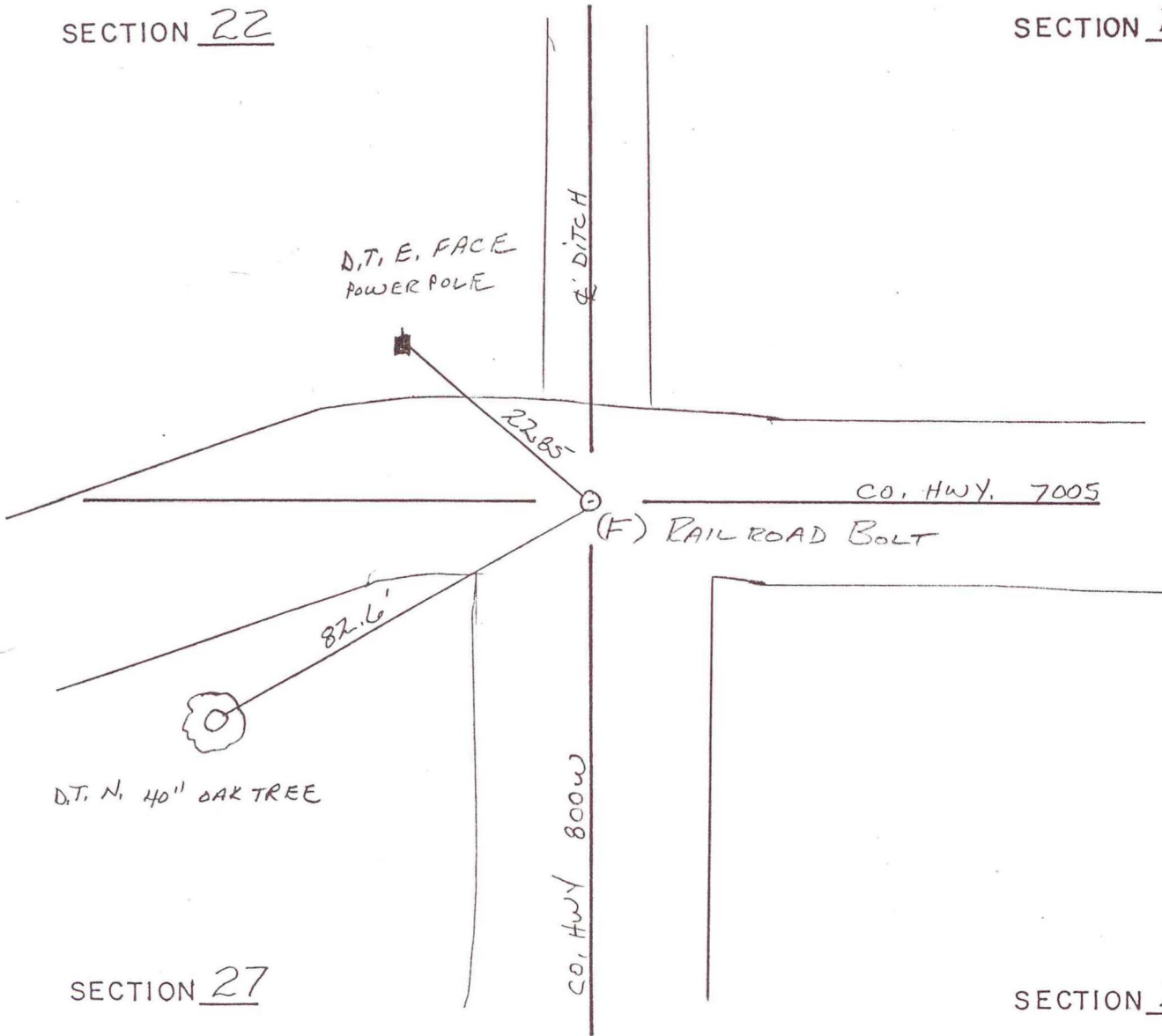


# RAILROAD TOWNSHIP

## T 32 N, R 4 W

SECTION 22

SECTION 23



SECTION 27

SECTION 26

DATE	BY	DATE	BY
5-4-91	DWC. A.W.		

CORNER OF: RECORD  USE

SOURCE OF INFORMATION:

T.E., 1991

R-17