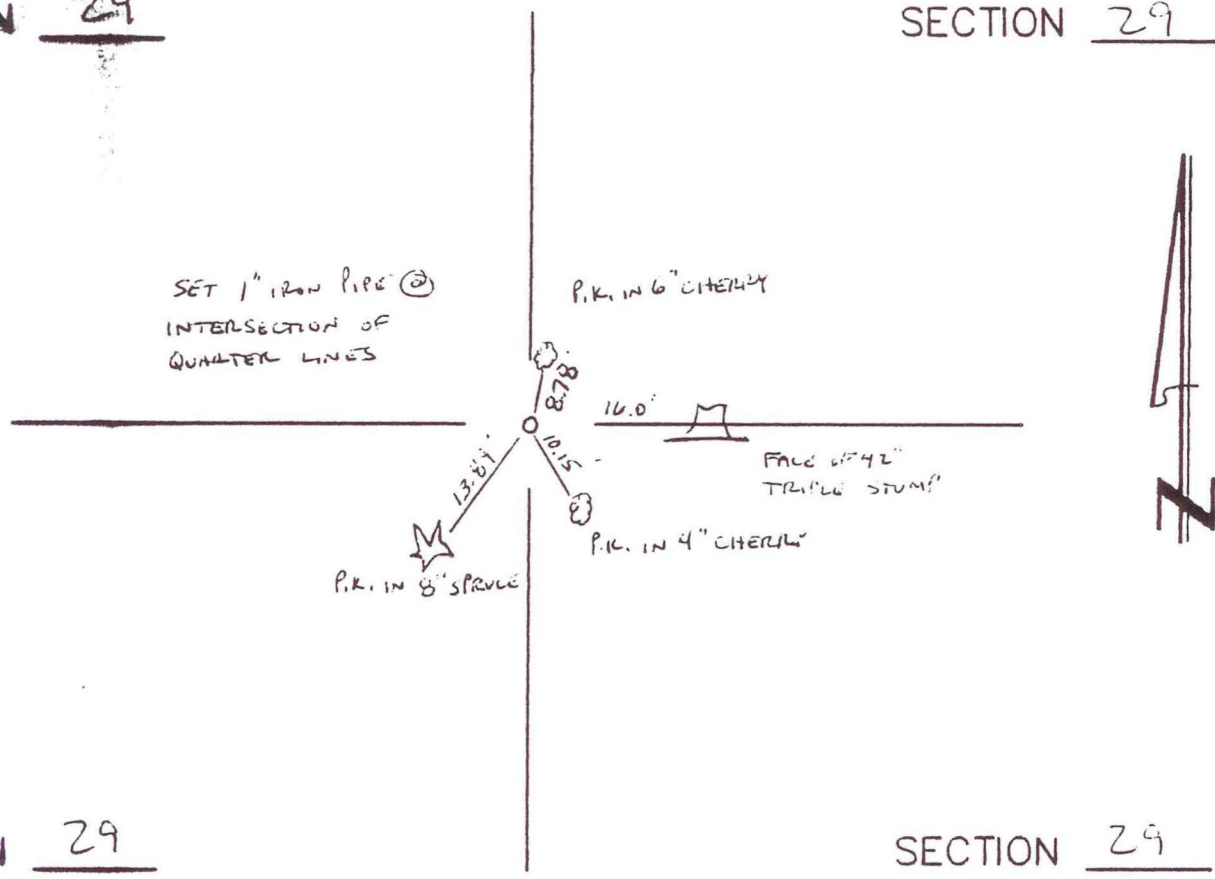


RAILROAD TOWNSHIP
R 32 N, R 4 W

SECTION 29

SECTION 29



SECTION 29

SECTION 29

DATE	BY	DATE	BY
4-10-1995	BSC		

CORNER OF: RECORD USE
SOURCE OF INFORMATION:
WIGHTMAN CRAMER

T-7