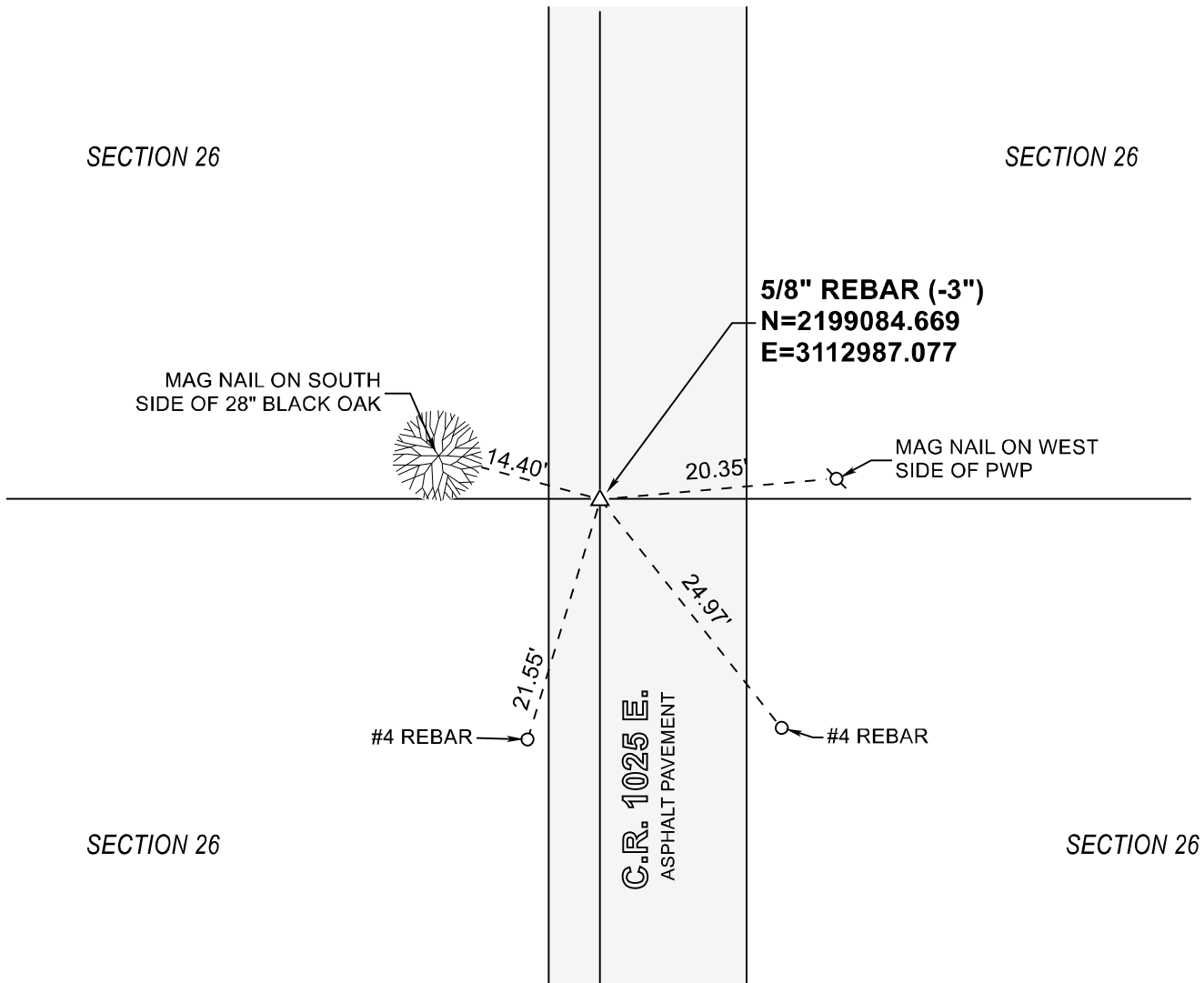


STARKE COUNTY SECTION CORNER RECORD

WASHINGTON TOWNSHIP

T 33 N, R 1 W

S18

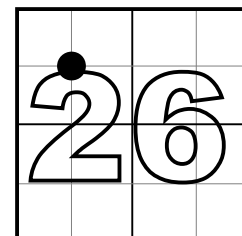


MONUMENT: 5/8" REBAR (-3")

PARTY: SES DATE: 06/17/2020

COMMENTS: RECOVERED 06/16/08 BY JL/PM. 3' WEST OF CENTERLINE OF 1025 E.

COORDINATE DATUM: INDIANA STATE PLANE WEST NAD83(2011).
Coordinates shown on this sheet are for informational purposes only, and are not to be used in lieu of measurements by a professional surveyor.



CORNER LOCATION
IN SECTION



NOT TO
SCALE