

WASHINGTON TOWNSHIP

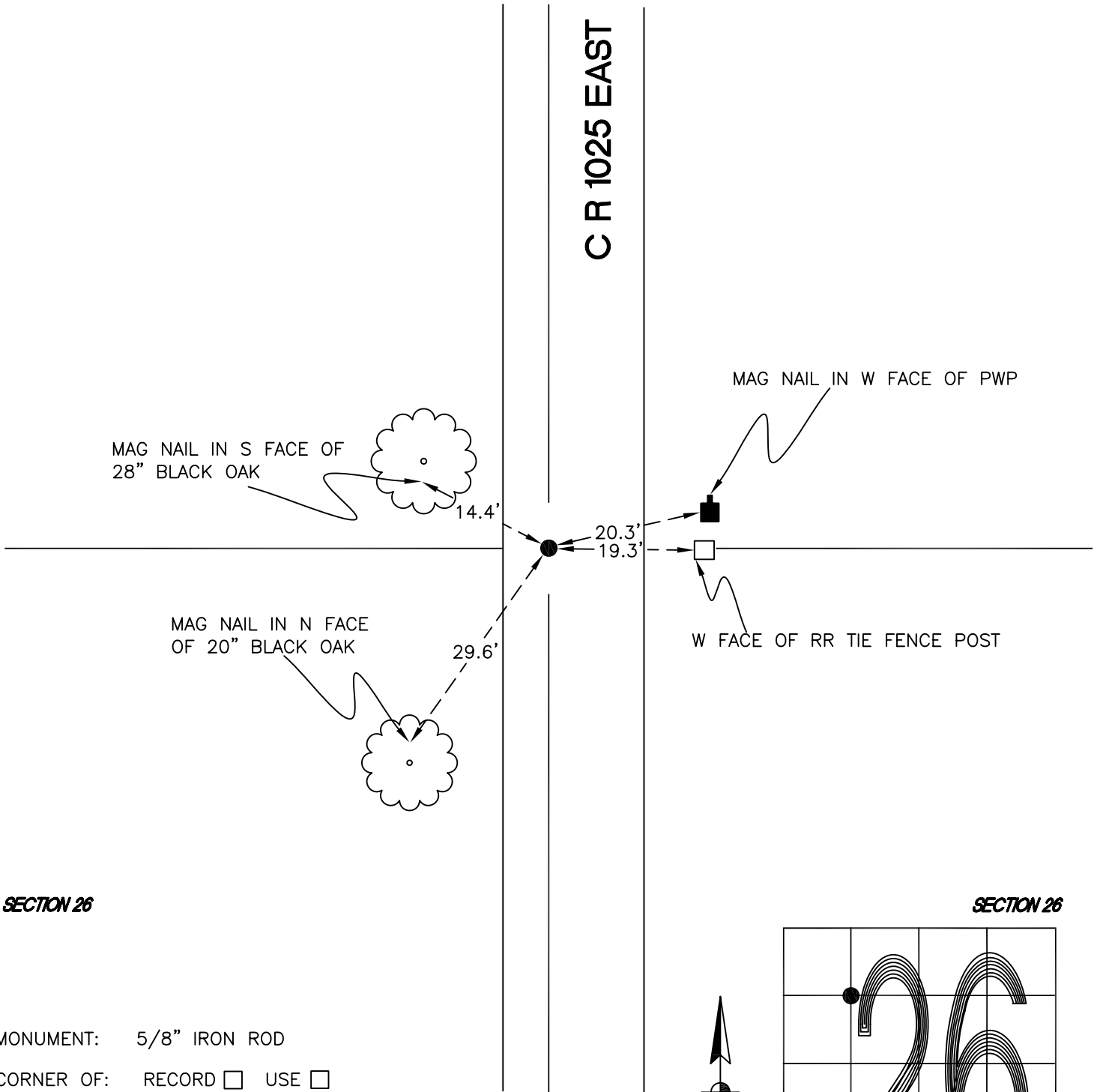
T 33 N, R 1 W

S18

SECTION 26

SECTION 26

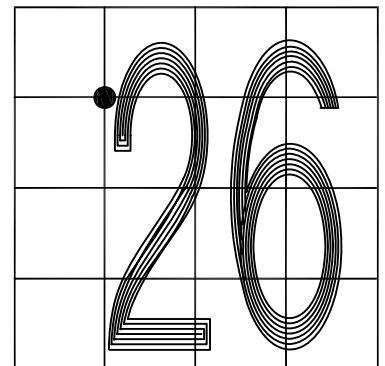
C R 1025 EAST



SECTION 26

SECTION 26

MONUMENT: 5/8" IRON ROD
CORNER OF: RECORD USE
PARTY: JL/PM
DATE: 6-16-2008
COMMENTS: 3' W OF \varnothing OF 1025E; 3" BELOW GRADE



CORNER LOCATION IN THE SECTION

S18