

NORTH BEND TOWNSHIP

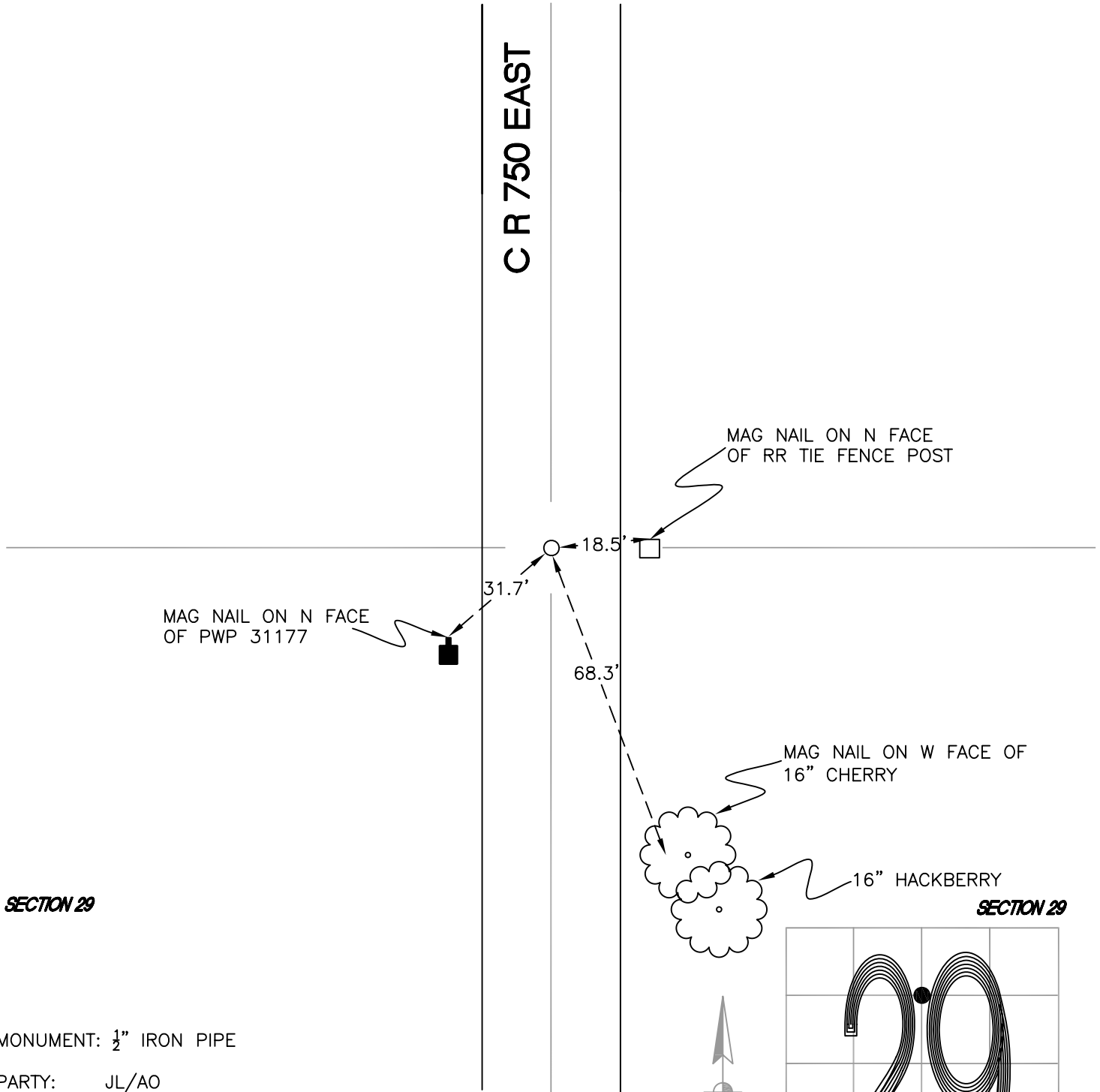
T 32 N, R 1 W

S7

SECTION 29

SECTION 29

CR 750 EAST



SECTION 29

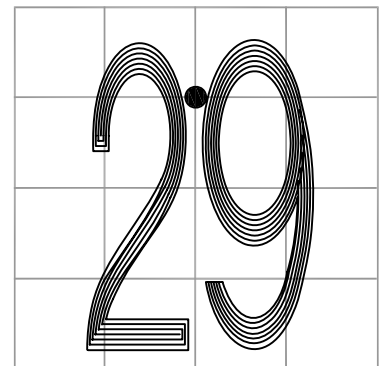
SECTION 29

MONUMENT: 1/2" IRON PIPE

PARTY: JL/AO

DATE: 6/7/12

COMMENTS: 1/4" IRON ROD NEXT TO PIPE ON E SIDE.
SET BY SMRT IN 1963.



CORNER LOCATION IN THE SECTION

S7