

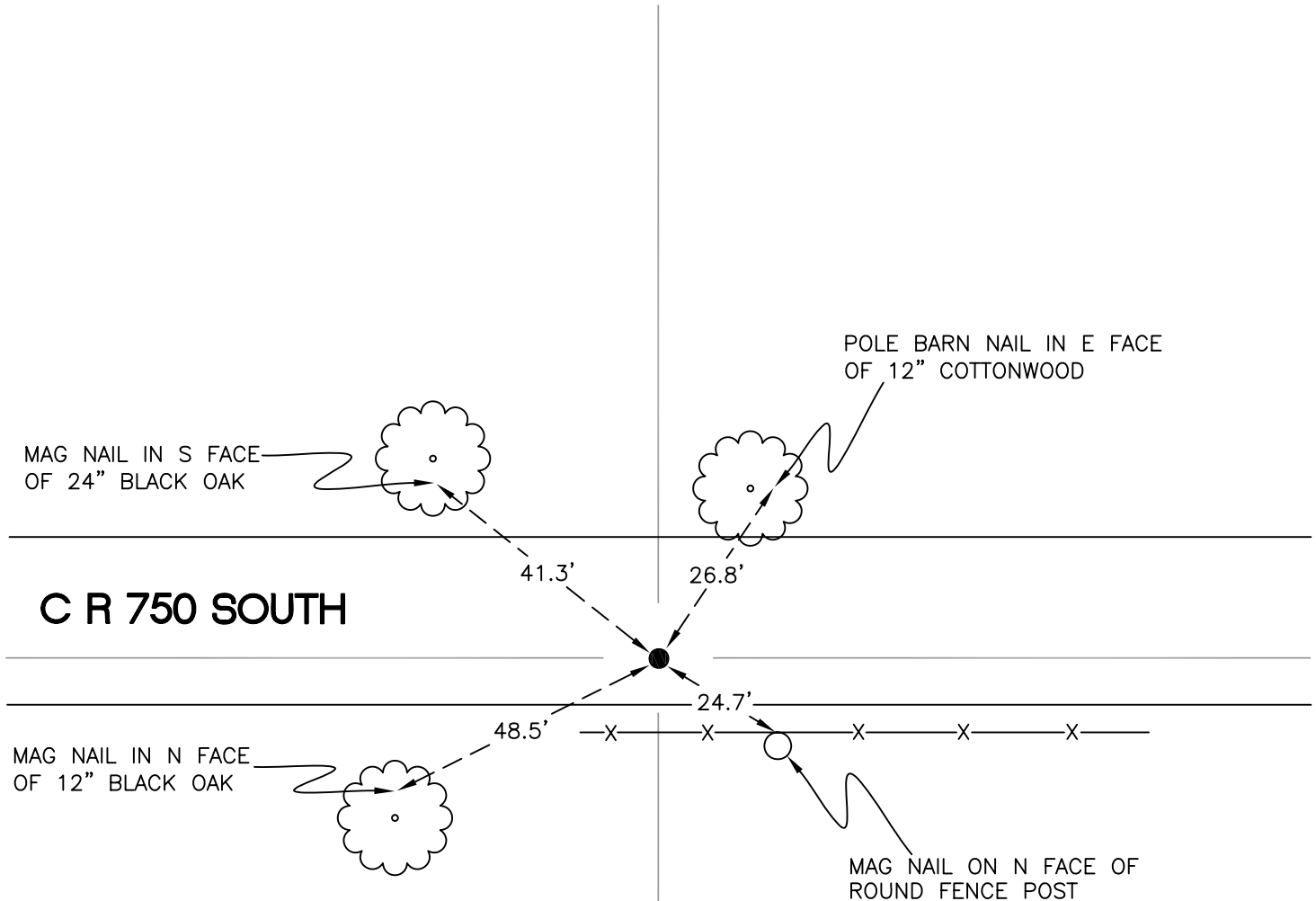
# NORTH BEND TOWNSHIP

## T 32 N, R 1 W

# T13

SECTION 28

SECTION 27



SECTION 28

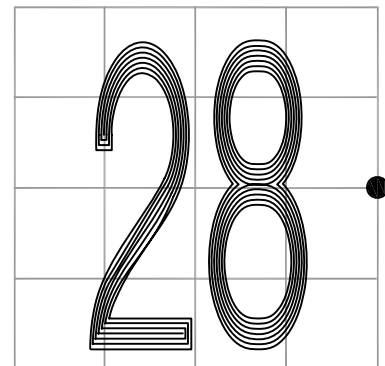
SECTION 27

MONUMENT: 3/4" IRON ROD

PARTY: JL/AO

DATE: 6/12/12

COMMENTS: 3" BELOW GRADE; 5.5' S OF  $\phi$  OF 750 S.  
SET BY WIGHTMAN CRAMER IN 1995.



CORNER LOCATION IN THE SECTION

# T13