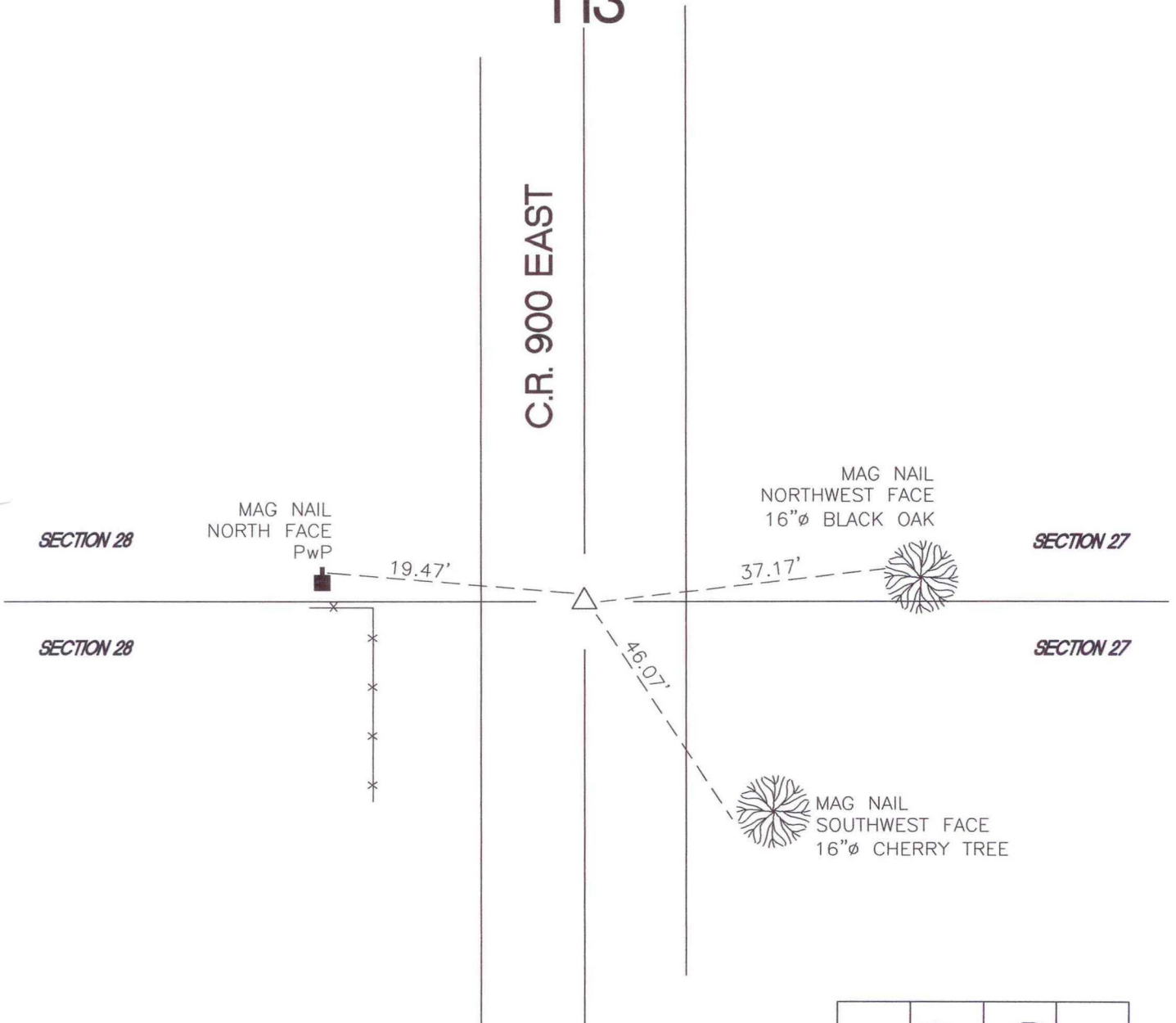


# OREGON TOWNSHIP

T 34 N, R 1 W

## T13

C.R. 900 EAST



SECTION 28

SECTION 27

SECTION 28

SECTION 27

MONUMENT: SEE COMMENTS

CORNER OF: RECORD  USE

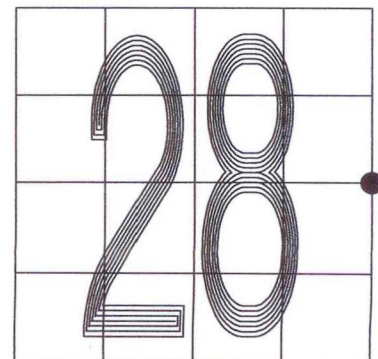
PARTY: VHJ/COD

DATE: 3-22-05

COMMENTS:

(F) RR SPIKE 5" BELOW GRADE, REPLACED WITH 3/4" REBAR.

HISTORY: RP/BMc, FROM THE STARKE COUNTY SURVEYOR'S OFFICE FOUND RR SPIKE 4" BELOW GRADE ON AUGUST 2, 1982.



CORNER LOCATION IN THE SECTION