

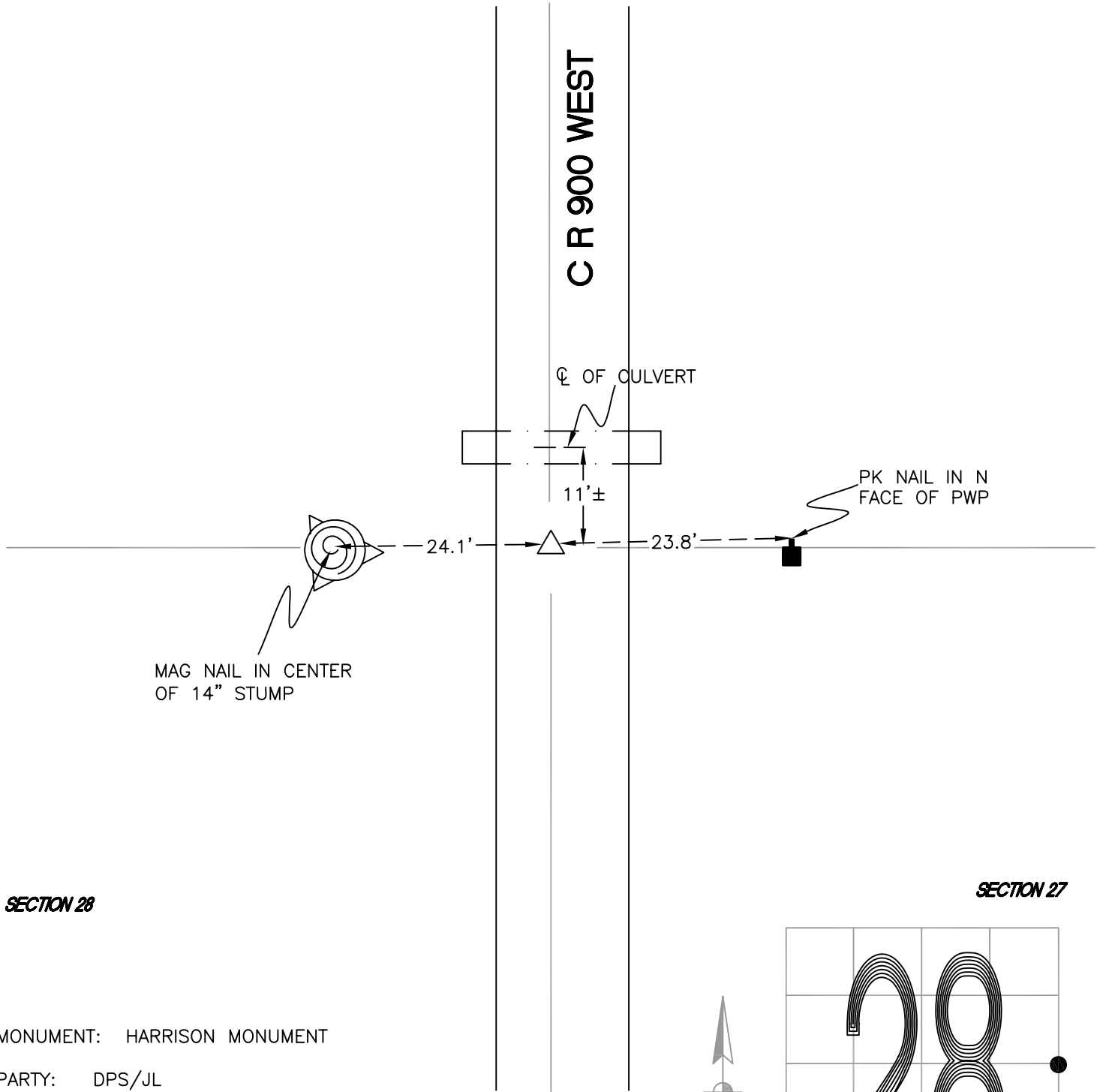
# RAILROAD TOWNSHIP

T 32 N, R 4 W

## T13

SECTION 28

SECTION 27



SECTION 28

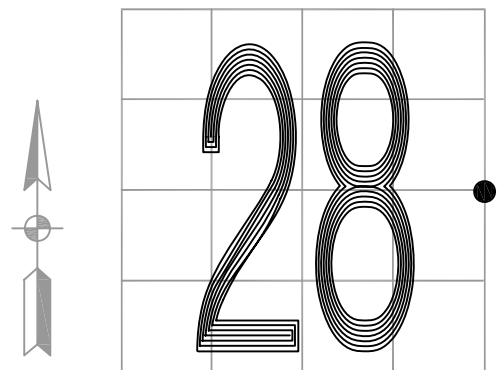
SECTION 27

MONUMENT: HARRISON MONUMENT

PARTY: DPS/JL

DATE: 5/7/2015

COMMENTS: MONUMENT IS 2.8' W OF CL OF 900 W.  
FOUND BY WIGHTMAN CRAMER IN 1996.



CORNER LOCATION IN THE SECTION

## T13