

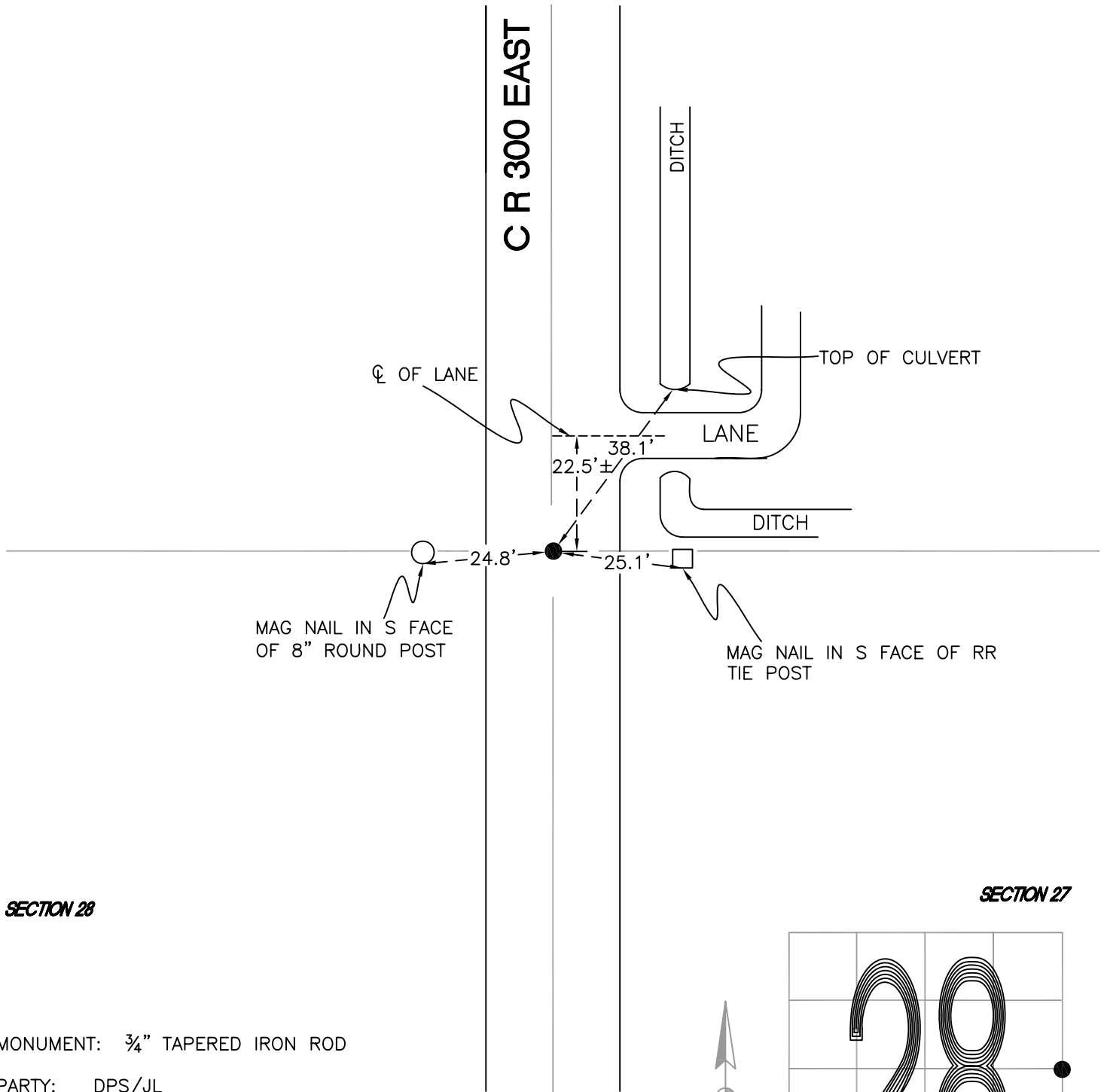
DAVIS TOWNSHIP

T 34 N, R 2 W

T13

SECTION 28

SECTION 27



SECTION 28

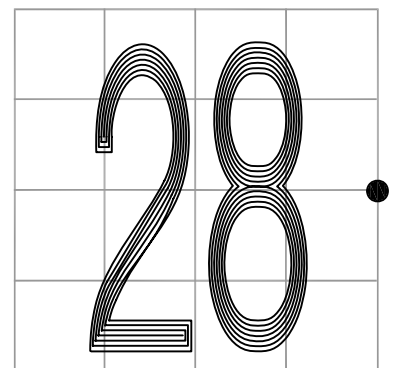
SECTION 27

MONUMENT: 3/4" TAPERED IRON ROD

PARTY: DPS/JL

DATE: 3/17/16

COMMENTS: FOUND BY RP/BMc IN 1982 AND 1980.



CORNER LOCATION IN THE SECTION

T13