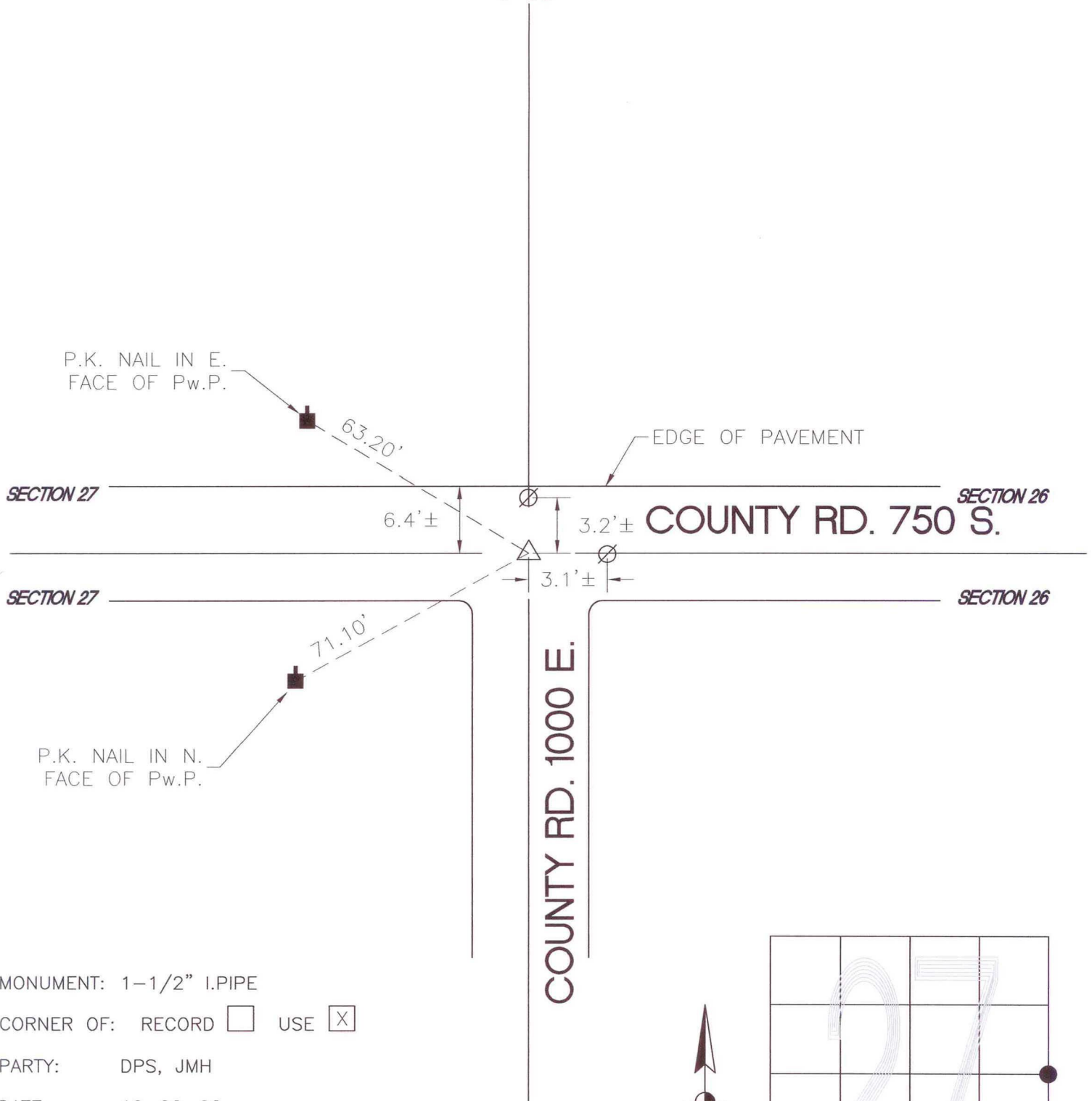


NORTH BEND TOWNSHIP

T 32 N, R 1 W

T17



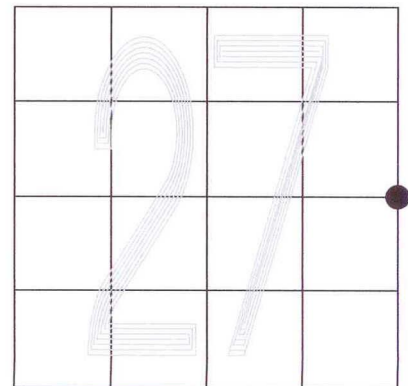
MONUMENT: 1-1/2" I.P.I.P.E

CORNER OF: RECORD USE

PARTY: DPS, JMH

DATE: 10-22-02

COMMENTS: W/ RR. SPK. IN CENTER
W/ PUNCH MARK



CORNER LOCATION IN THE SECTION