

RAILROAD TOWNSHIP

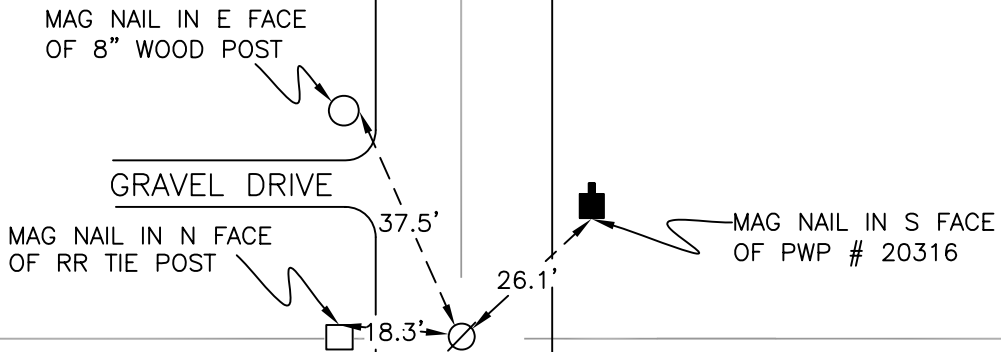
T 32 N, R 4 W

T17

SECTION 27

SECTION 26

C R 800 WEST



SECTION 27

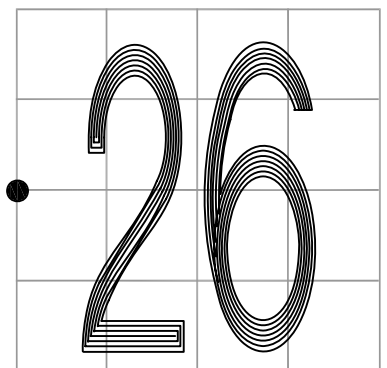
SECTION 26

MONUMENT: RAILROAD SPIKE

PARTY: DPS/JL

DATE: 5/8/2015

COMMENTS: 2' W OF C OF 800 W. USED BY WIGHTMAN PETRIE FOR SURVEY IN 2001 AND GRAND KANKAKEE SURVEY, DOCUMENT # 2003461451.



CORNER LOCATION IN THE SECTION

T17