

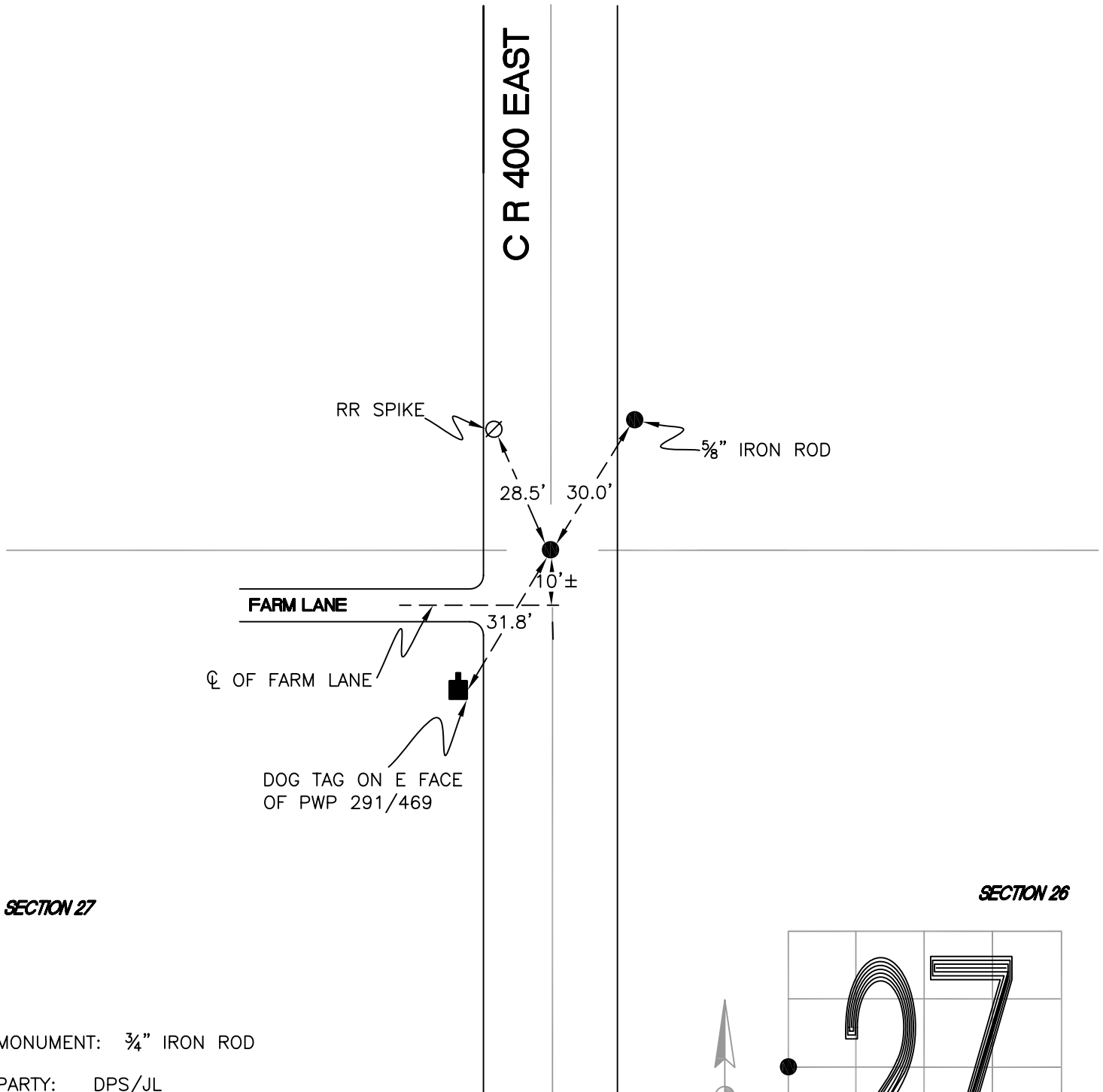
CALIFORNIA TOWNSHIP

T 32 N, R 2 W

T17

SECTION 27

SECTION 26



SECTION 27

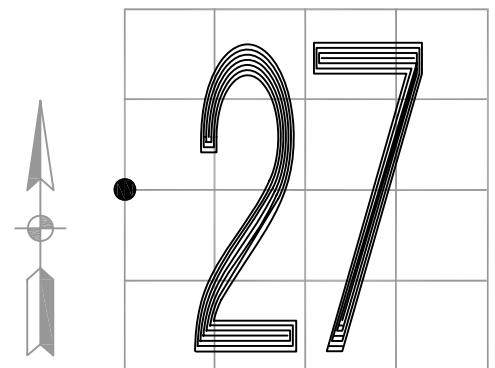
SECTION 26

MONUMENT: 3/4" IRON ROD

PARTY: DPS/JL

DATE: 7/14/14

COMMENTS: MONUMENT IS 6" BELOW GRADE. SET BY
DLA IN 1990.



CORNER LOCATION IN THE SECTION

T17