

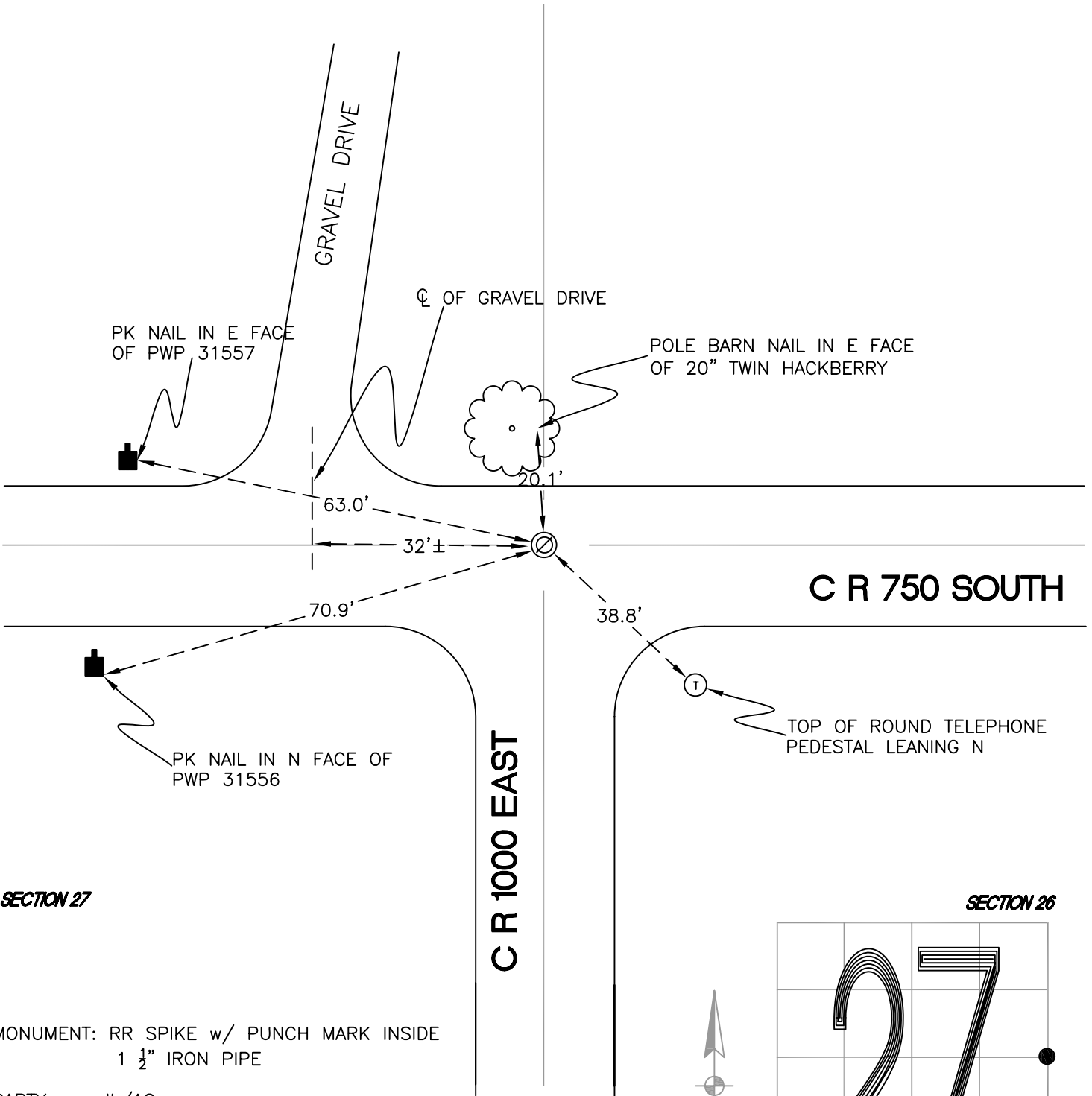
NORTH BEND TOWNSHIP

T 32 N, R 1 W

T17

SECTION 27

SECTION 26



SECTION 27

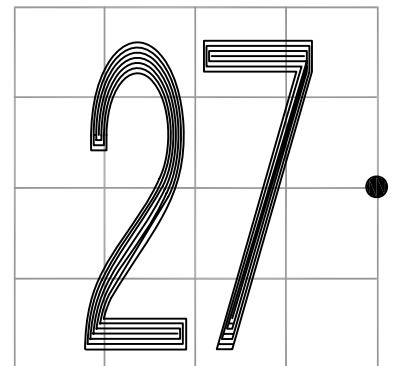
SECTION 26

MONUMENT: RR SPIKE w/ PUNCH MARK INSIDE
1 1/2" IRON PIPE

PARTY: JL/AO

DATE: 6/13/12

COMMENTS: 1' N OF CL OF 750 S. FOUND IN
2002 BY DPS/JMH



CORNER LOCATION IN THE SECTION

T17