

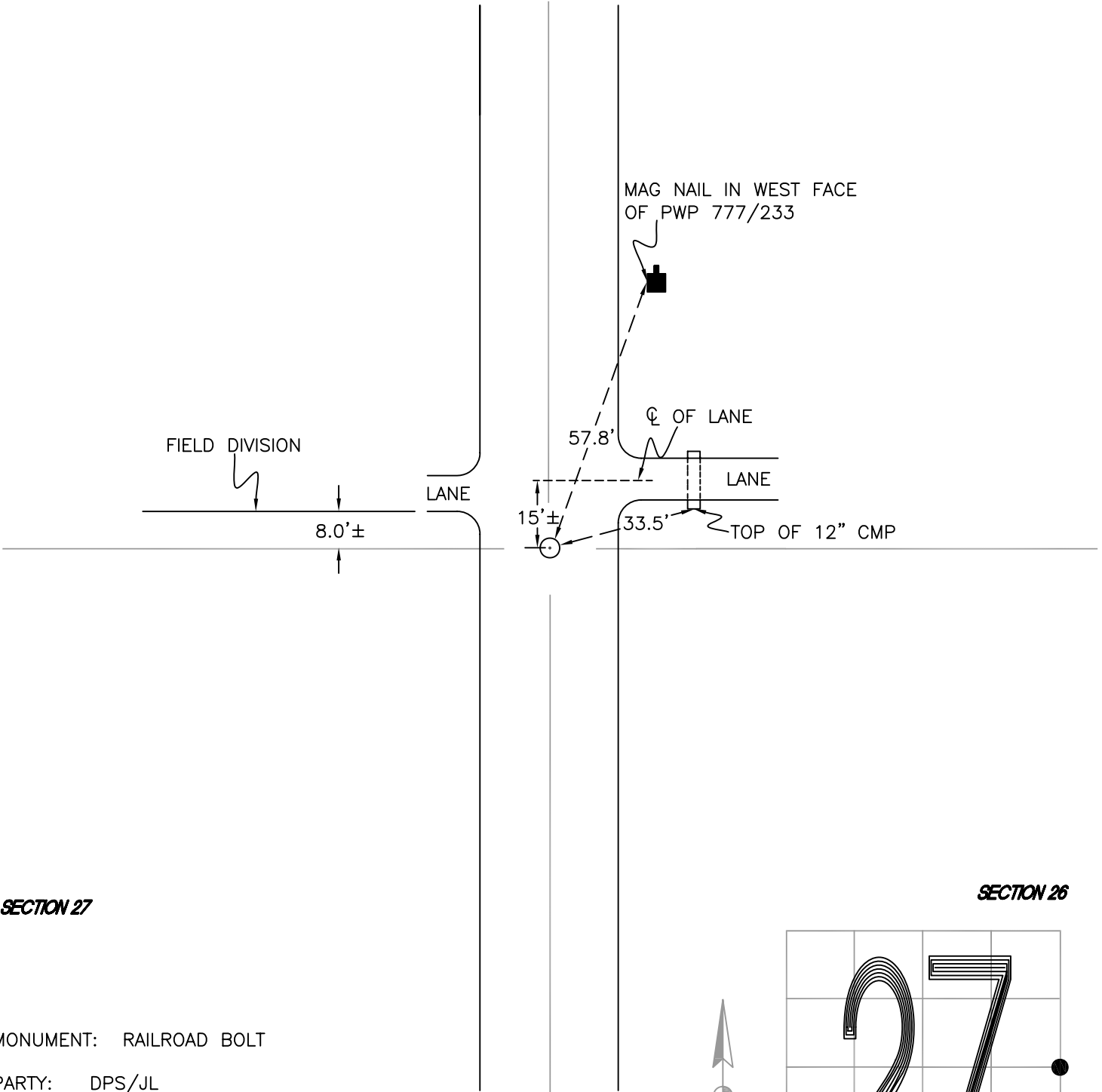
# DAVIS TOWNSHIP

T 34 N, R 2 W

## T17

SECTION 27

SECTION 26



SECTION 27

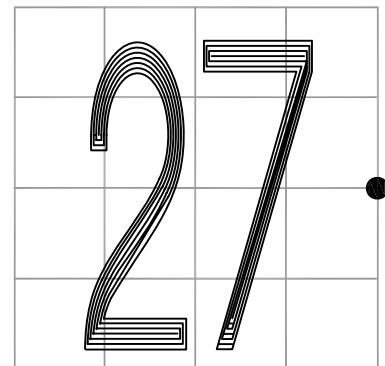
SECTION 26

MONUMENT: RAILROAD BOLT

PARTY: DPS/JL

DATE: 3/17/16

COMMENTS: SET BY RSA/DPS IN 2002



CORNER LOCATION IN THE SECTION

# T17