

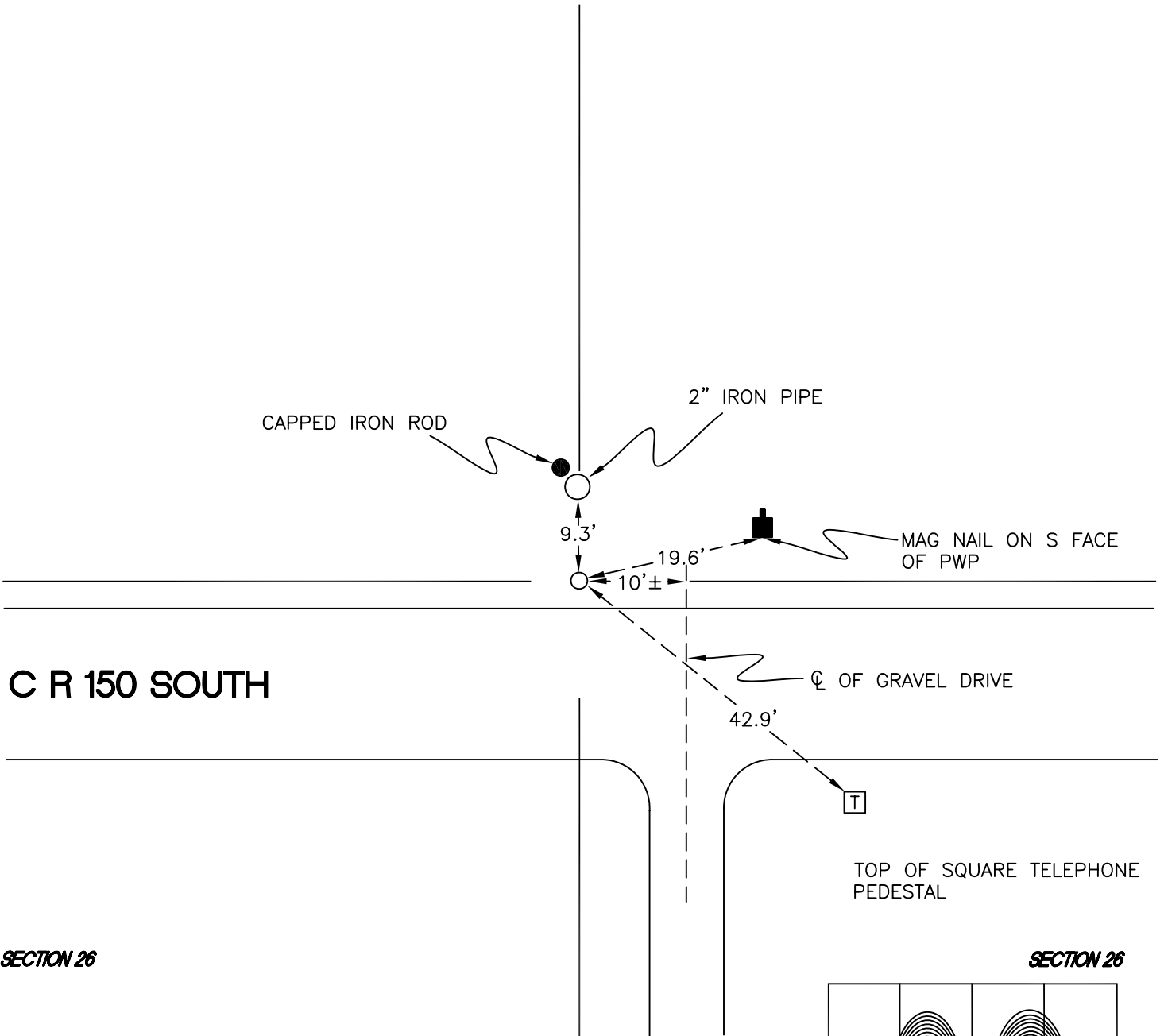
WASHINGTON TOWNSHIP

T 33 N, R 1 W

T19

SECTION 26

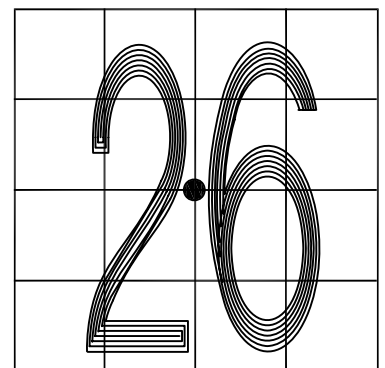
SECTION 26



SECTION 26

SECTION 26

MONUMENT: 3/8" IRON PIPE
 CORNER OF: RECORD USE
 PARTY: JL/PM
 DATE: 8-5-2008
 COMMENTS: 6" BELOW GRADE; 2' N OF EDGE OF PAVEMENT OF 150S. ESTABLISHED BY TERRITORIAL ENGINEERING IN SURVEY # 84S101. ALL OTHER MONUMENTS WERE PUT IN BY OTHERS FOR VARIOUS SURVEYS.



CORNER LOCATION IN THE SECTION

T19