

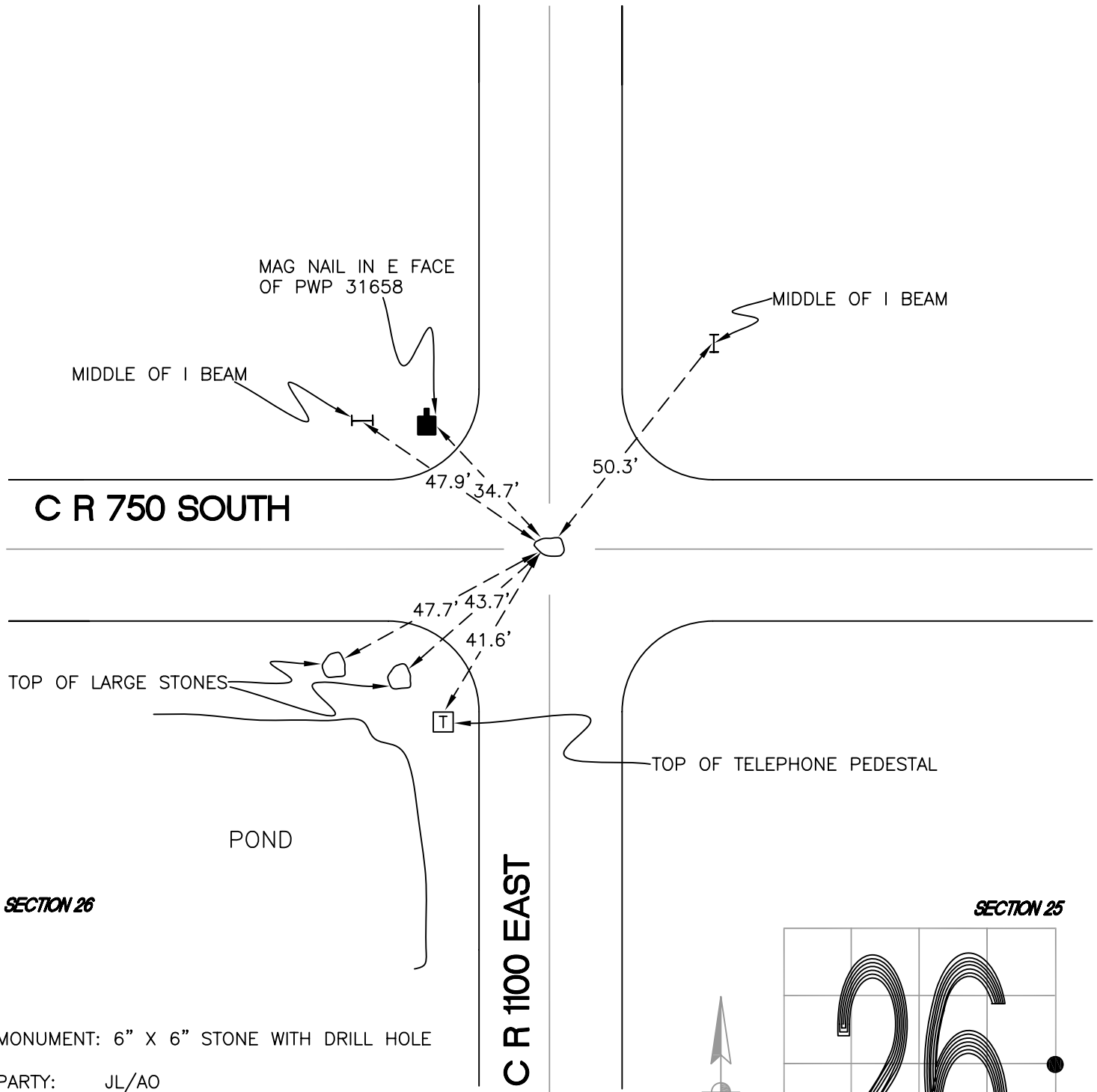
NORTH BEND TOWNSHIP

T 32 N, R 1 W

T21

SECTION 26

SECTION 25



SECTION 26

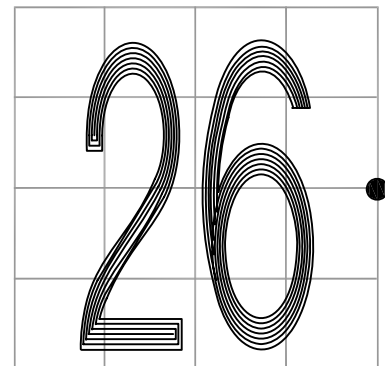
SECTION 25

MONUMENT: 6" X 6" STONE WITH DRILL HOLE

PARTY: JL/AO

DATE: 6/13/12

COMMENTS: STONE SET IN 1898. FOUND IN 1986 BY SJF.



CORNER LOCATION IN THE SECTION

T21