

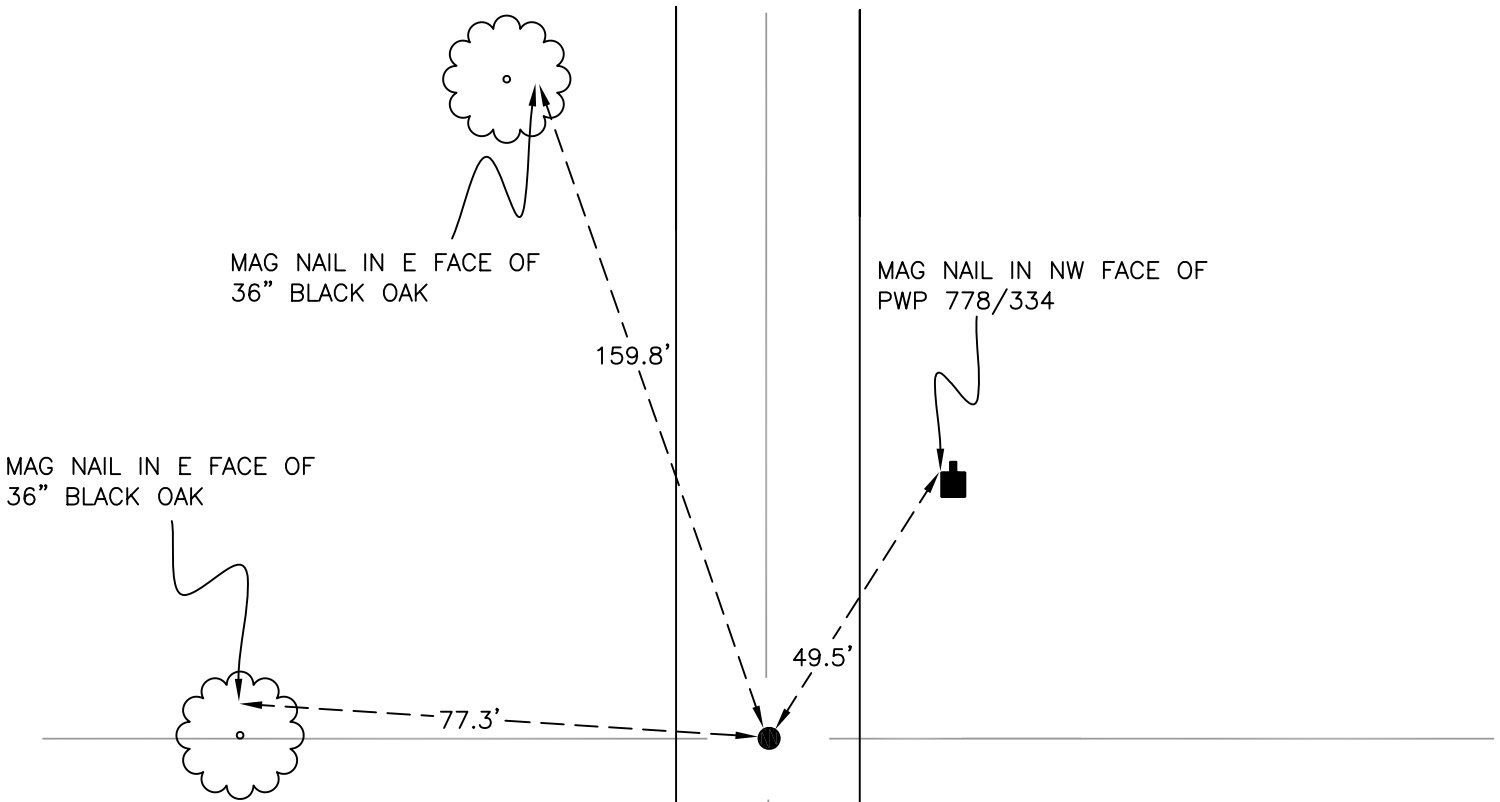
# CALIFORNIA TOWNSHIP

T 32 N, R 2 W

## T21

SECTION 26

SECTION 25



SECTION 26

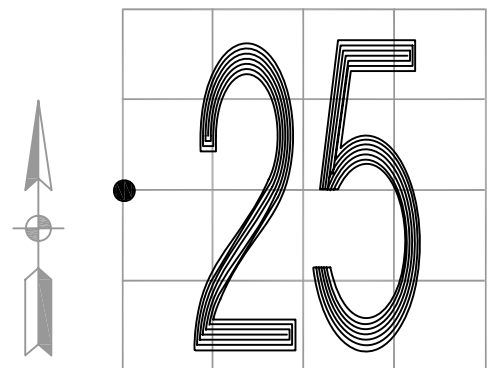
SECTION 25

MONUMENT: 3/4" IRON ROD

PARTY: DPS/JL

DATE: 7/7/14

COMMENTS: MONUMENT IS 3" BELOW GRADE. RR CROSSING BOLT FOUND BY VHJ IN 1981. IRON ROD IS THE CORRECT DISTANCE FROM THE PWP, THE SOLE REMAINING REFERENCE.



CORNER LOCATION IN THE SECTION

# T21