

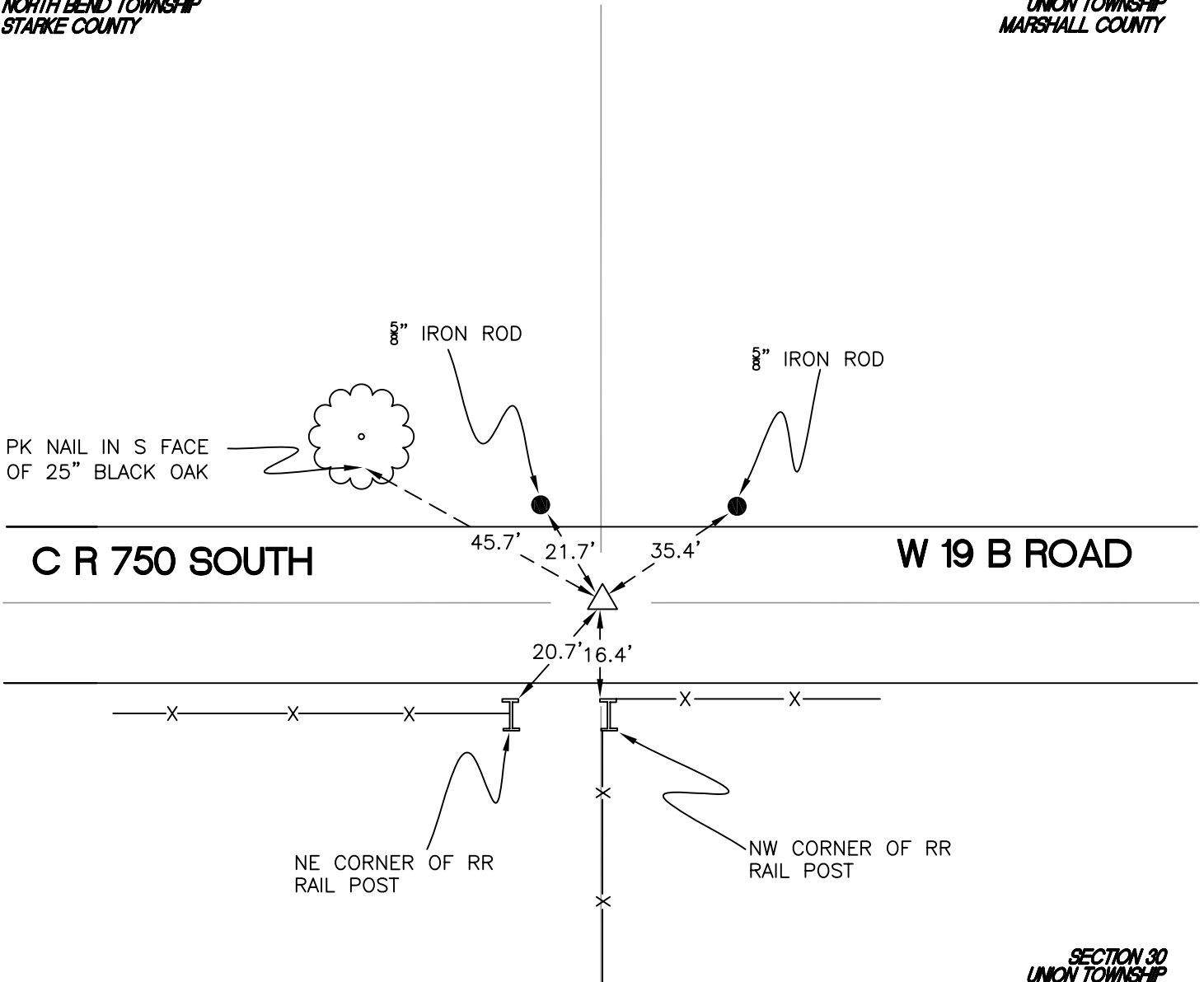
NORTH BEND TOWNSHIP

T 32 N, R 1 W

T25

*SECTION 25
NORTH BEND TOWNSHIP
STARKE COUNTY*

*SECTION 30
UNION TOWNSHIP
MARSHALL COUNTY*



*SECTION 25
NORTH BEND TOWNSHIP
STARKE COUNTY*

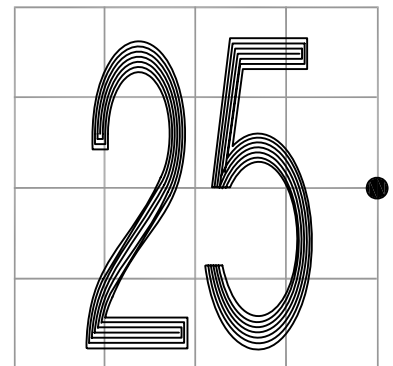
*SECTION 30
UNION TOWNSHIP
MARSHALL COUNTY*

MONUMENT: HARRISON MONUMENT

PARTY: JL/AO

DATE: 6/13/12

COMMENTS: IRON PIPE FOUND IN 1975 AND 1977
REPLACED BY MARSHALL COUNTY WITH
ALUMINUM MONUMENT IN 1999 AND THE
CURRENT MONUMENT IN 2008.



CORNER LOCATION IN THE SECTION

T25