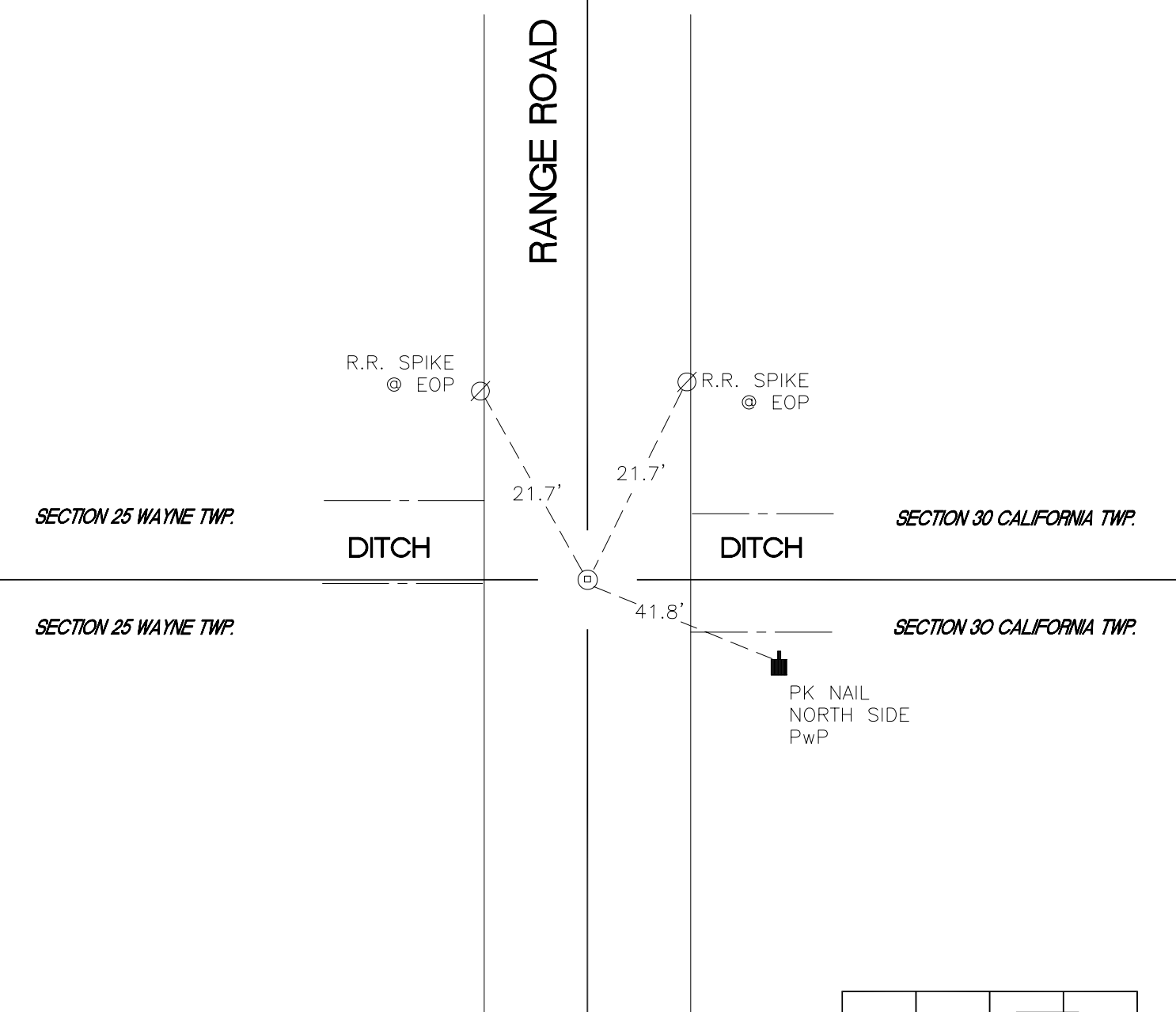


# WAYNE TOWNSHIP

T 32 N, R 3 W

## T25



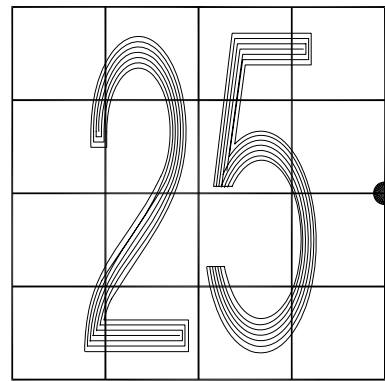
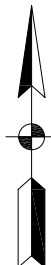
MONUMENT: RR CROSSING BOLT WITH "X" ON TOP

CORNER OF: RECORD  USE

PARTY: DPS/JL

DATE: 7/16/14

COMMENTS: RR CROSSING BOLT SET IN 2004 ON CRAMER LINE BY VHJ/COD.



# T25

CORNER LOCATION IN THE SECTION