

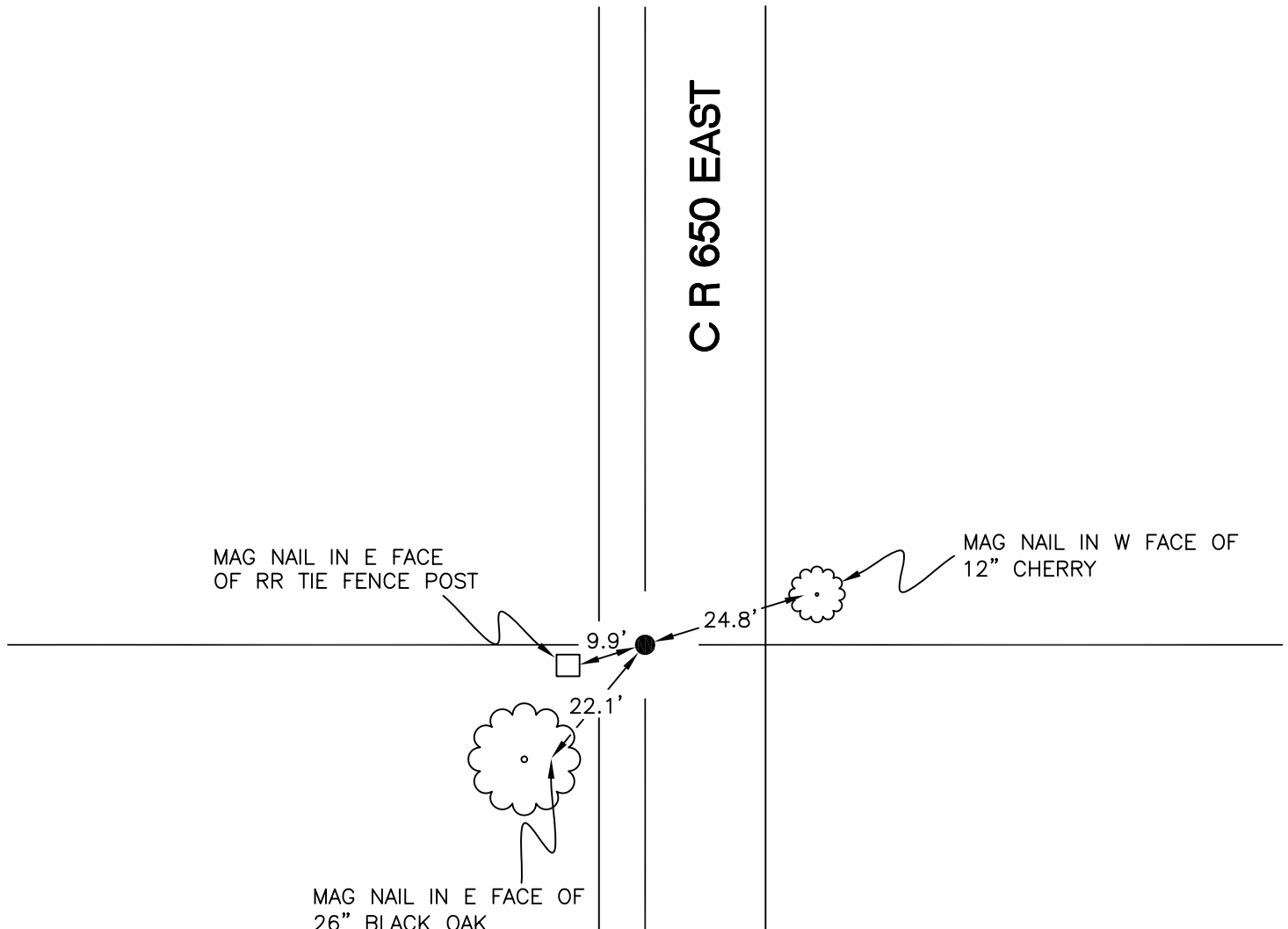
WASHINGTON TOWNSHIP

T 33 N, R 1 W

T3

SECTION 30

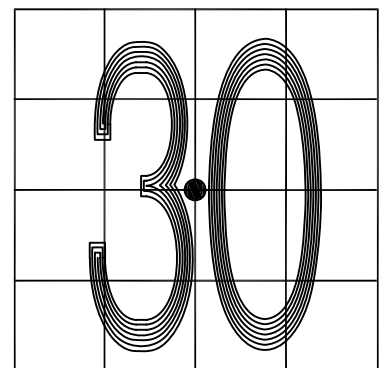
SECTION 30



SECTION 30

SECTION 30

MONUMENT: 5/8" CAPPED IRON ROD
CORNER OF: RECORD USE
PARTY: JL/PM
DATE: 7-3-2008
COMMENTS: 5' W OF \odot OF 650E.
MONUMENT ESTABLISHED BY PLYMOUTH LAND
SURVEYING IN SURVEY # 02-251.



CORNER LOCATION IN THE SECTION

T3