

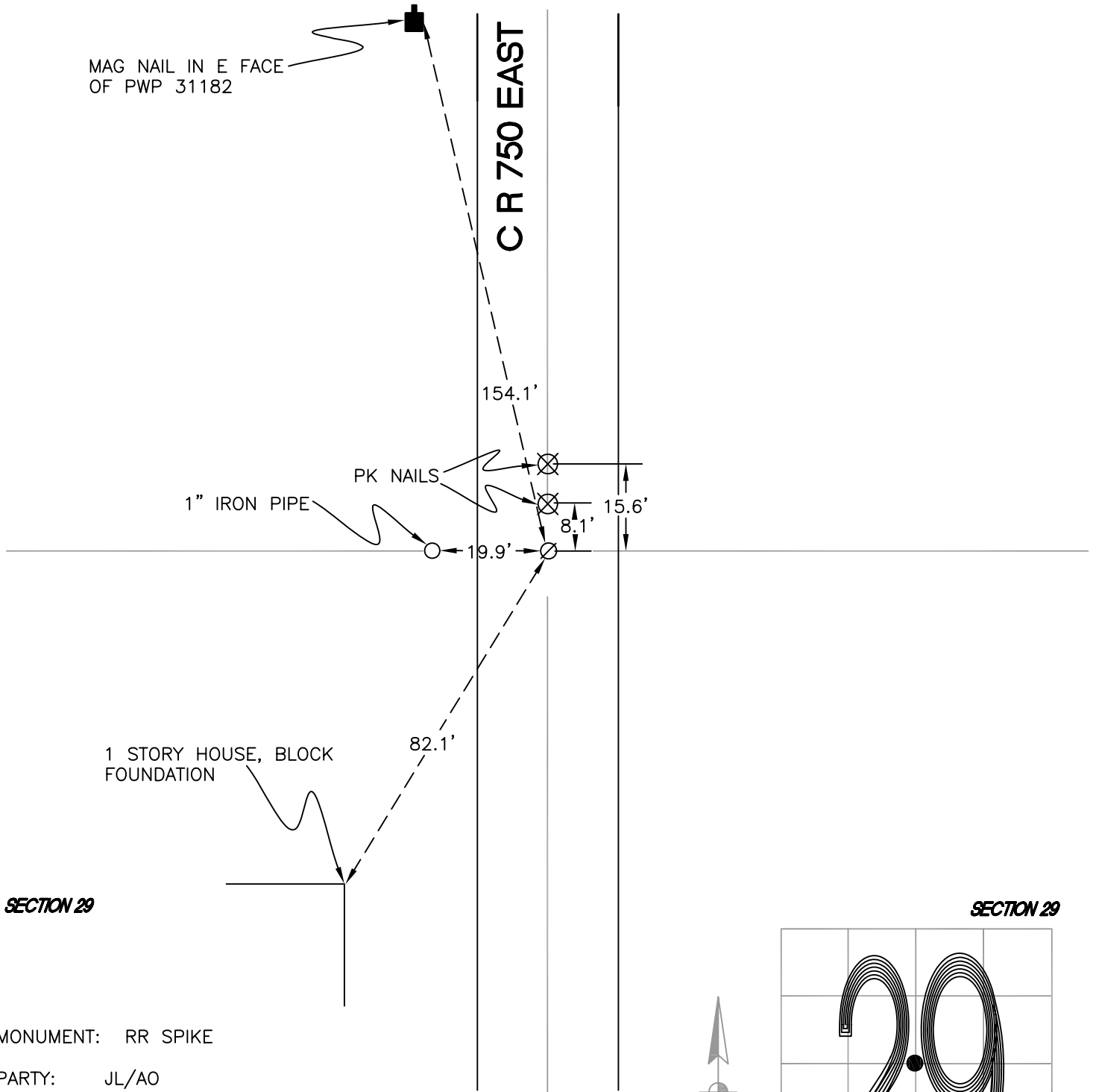
NORTH BEND TOWNSHIP

T 32 N, R 1 W

T7

SECTION 29

SECTION 29



SECTION 29

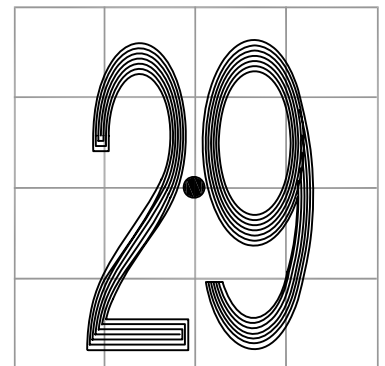
SECTION 29

MONUMENT: RR SPIKE

PARTY: JL/AO

DATE: 6/7/12

COMMENTS: 1.5' W OF \hat{C} OF 750 E
WHIGHTMAN CRAMER SET THIS MONUMENT
IN 1996 BASED OF THE INTERSECTION
OF LINES BETWEEN THE $\frac{1}{4}$ CORNERS OF
SECTION 29.



CORNER LOCATION IN THE SECTION

T7